

Scrum for Team System v2.0

Installation Guide

Contents

Installation	3
Typical Install.....	3
Steps.....	3
SharePoint Install	8
Steps.....	8
Troubleshooting.....	13

Installation

The Scrum for Team System (SFTS) v2.0 installer supports 2 installation modes:

- Typical Install
- SharePoint Template Install

These modes are automatically determined by the installer depending on the installed prerequisites.

Typical Install

The typical installation is recommended for most installations where Windows SharePoint Services (WSS) is installed on the TFS Application tier server. This installation has the following prerequisites:

- Team Explorer 2008
- Windows SharePoint Services 3.0

Steps



Figure 1

The first step in the SFTS installation, as shown in Figure 1, should be run as the tfsetup user account. If you used a different user account to install TFS the SFTS installation should be run as that user.

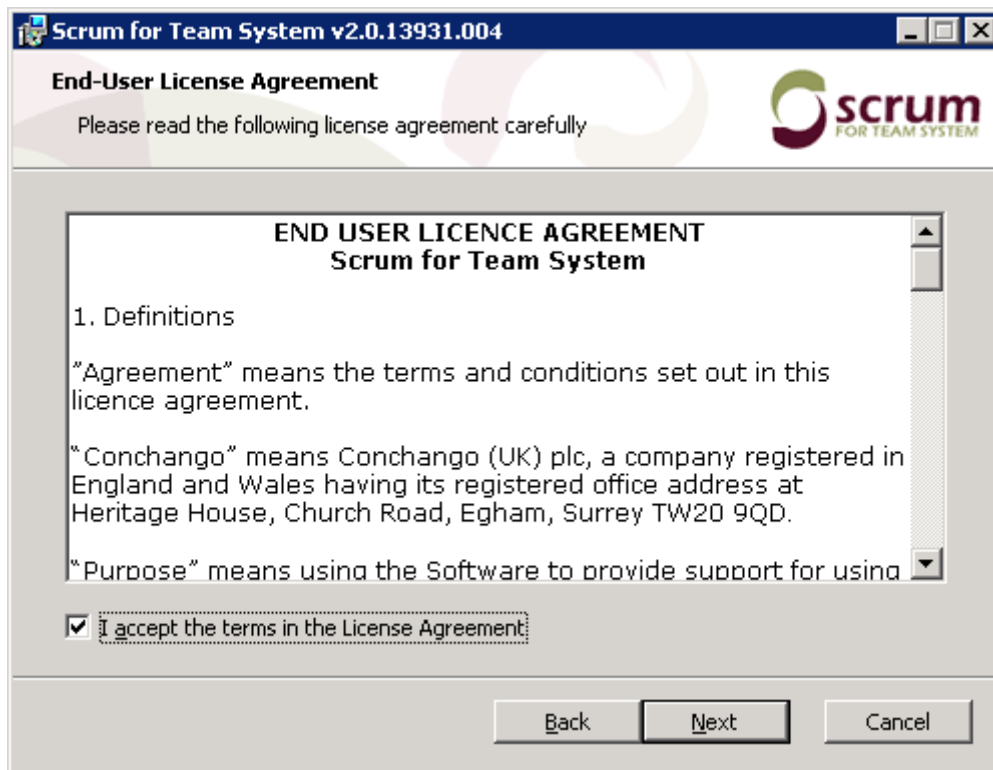


Figure 2

The next step in the installation, as shown in Figure 2, is the End User License Agreement (EULA), this must be accepted for the installation to proceed.

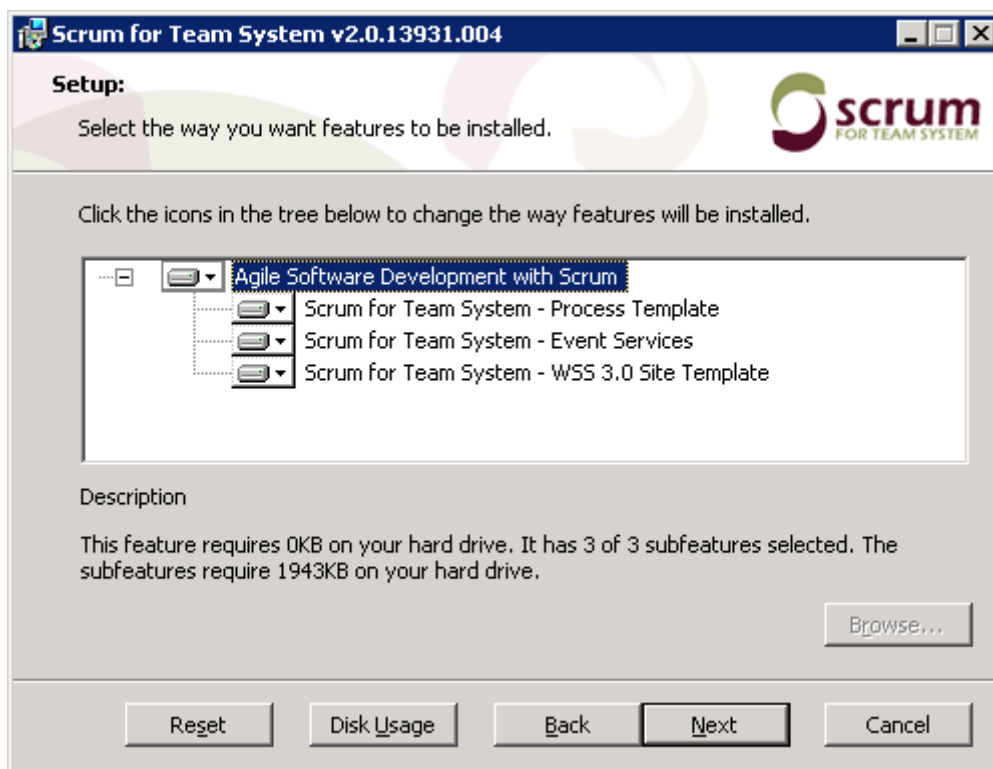


Figure 3

The next step, as shown in Figure 3, is the feature selection dialog. This step allows you to select which features are installed; in a typical installation all features should be installed.

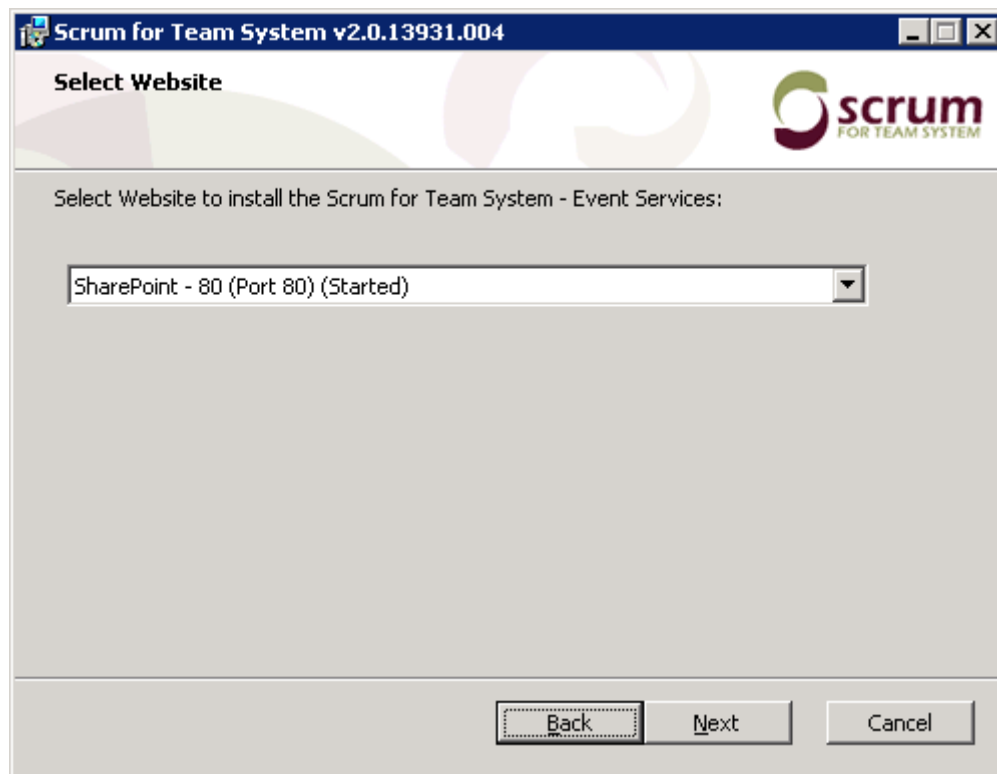


Figure 4

The next step, shown in Figure 4, allows you to choose which website the SFTS eventing service is installed to. By default the first started website listening of Port 80 is selected and should be used. If however you wish to have the eventing service on an alternative website select it from the combo box.

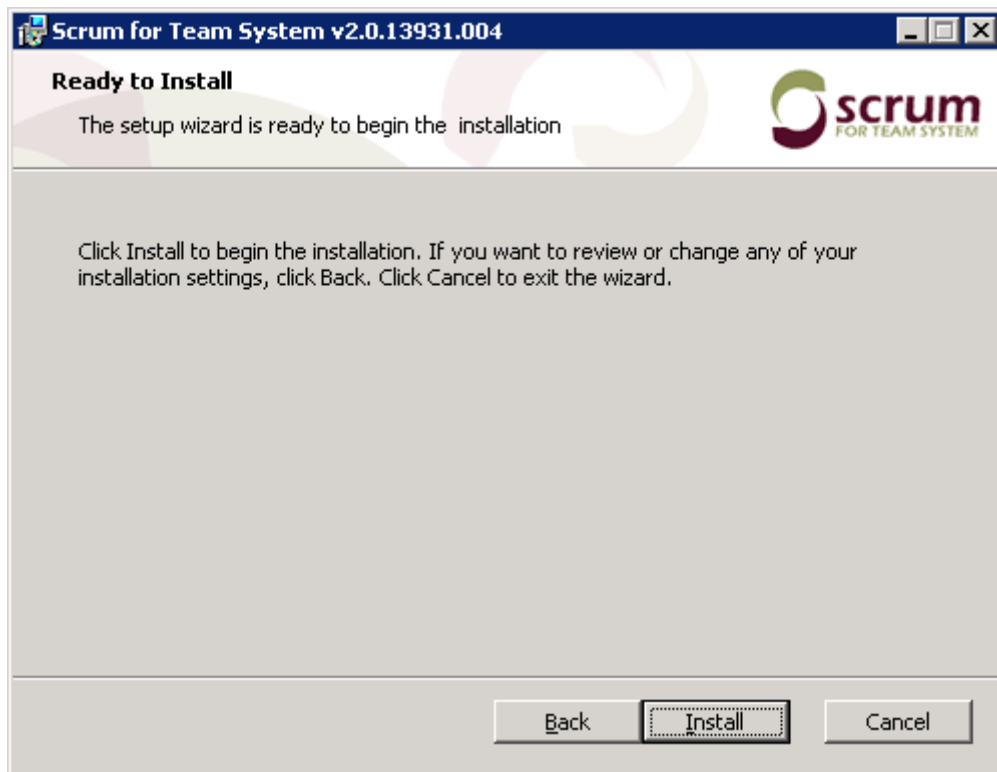


Figure 5

Once these steps have been completed the installation has collected all the information required and can proceed.

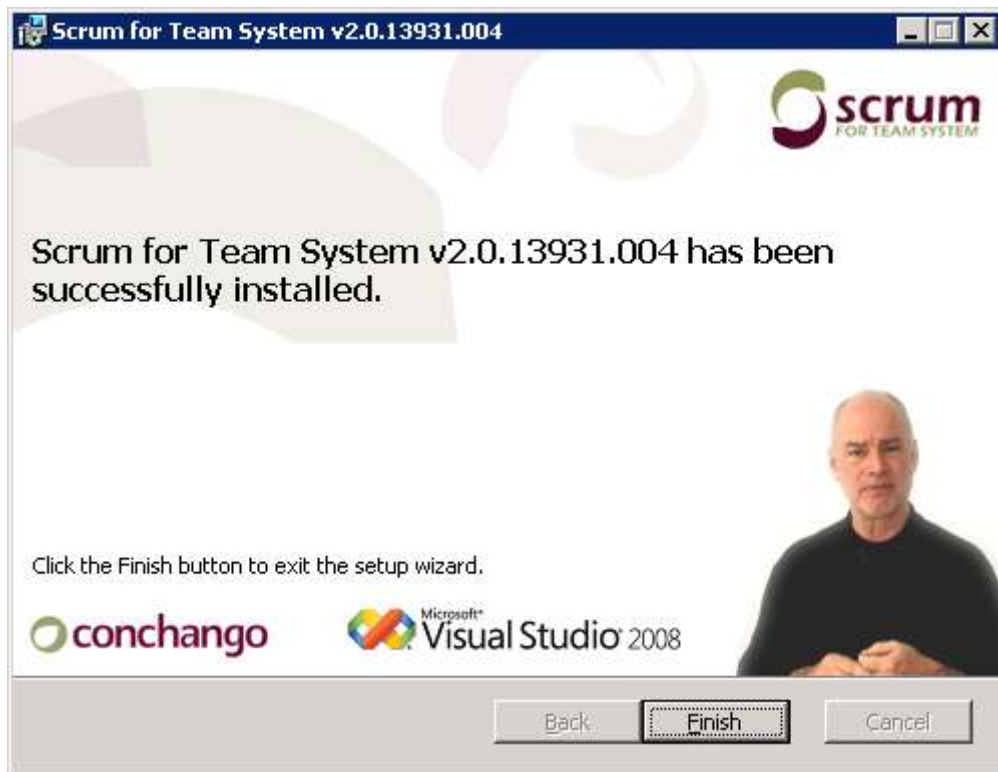


Figure 6

Once the installation steps have completed SFTS is ready and you can create Team projects based on the template.

SharePoint Install

The SharePoint installation is required when you have hosted the WSS platform on a separate server from the TFS application tier. This allows you to centralise your WSS sites on a single server / farm. This installation type has the following prerequisites:

- Windows SharePoint Services 3.0

Steps



Figure 7

The first step in the SFTS installation, as shown in Figure 7, should be run as the tfsetup user account. If you used a different user account to install TFS the SFTS installation should be run as that user.

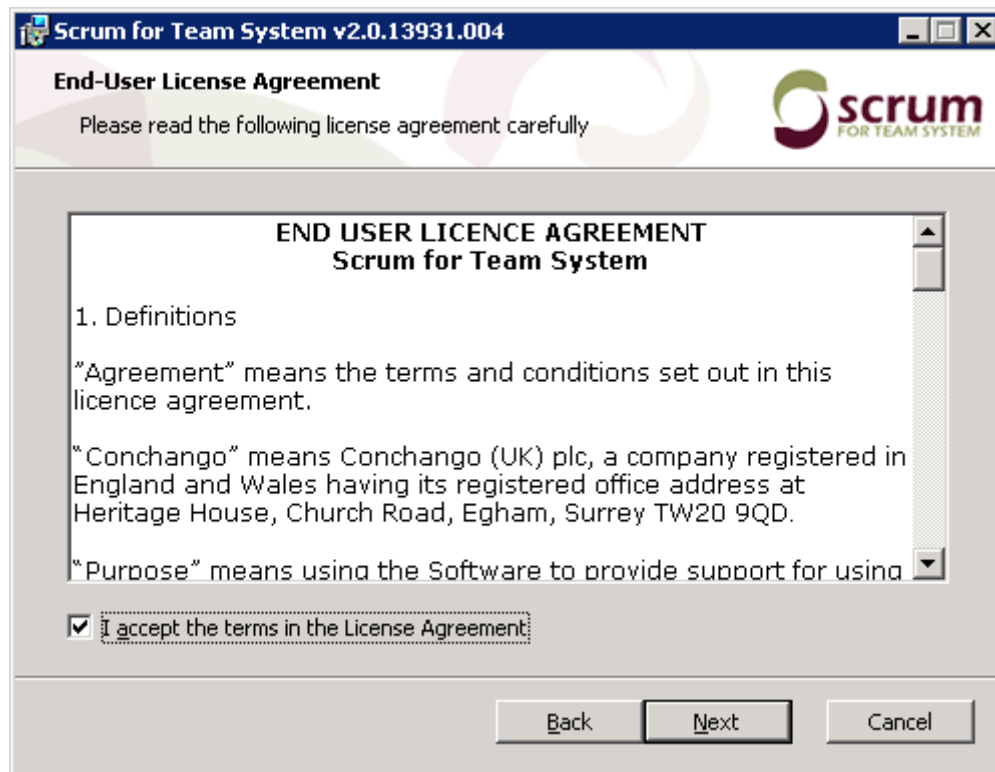


Figure 8

The next step in the installation, as shown in Figure 8, is the End User License Agreement (EULA), this must be accepted for the installation to proceed.

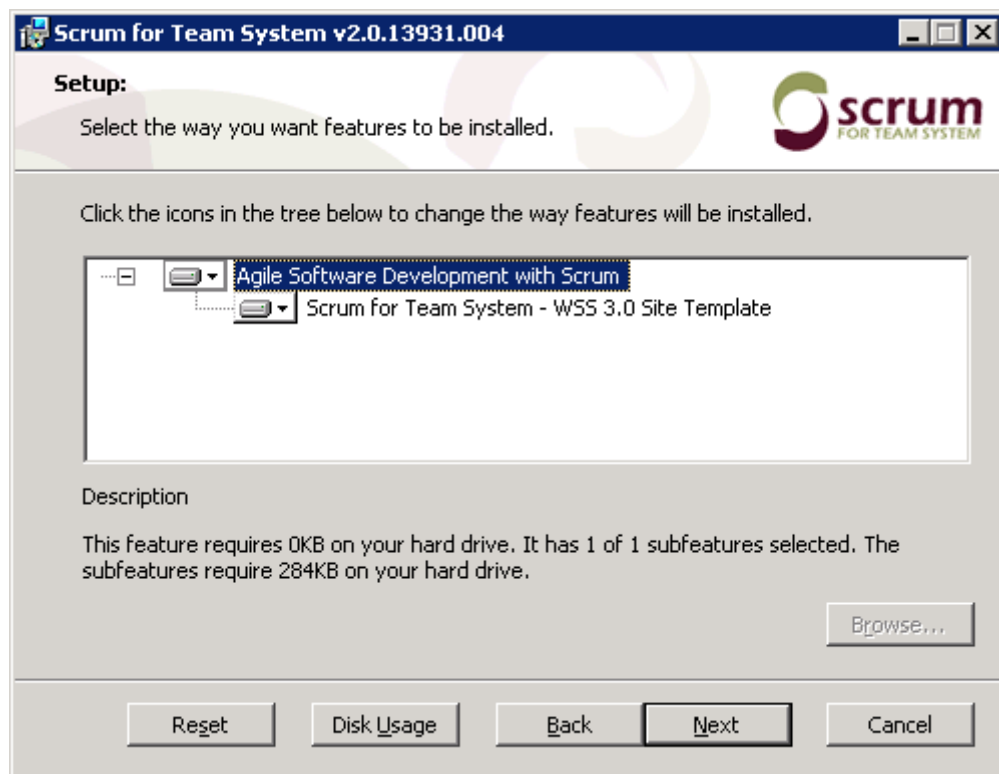


Figure 9

The next step, as shown in Figure 9, is the feature selection dialog. This only has the option to install the Site Template feature.

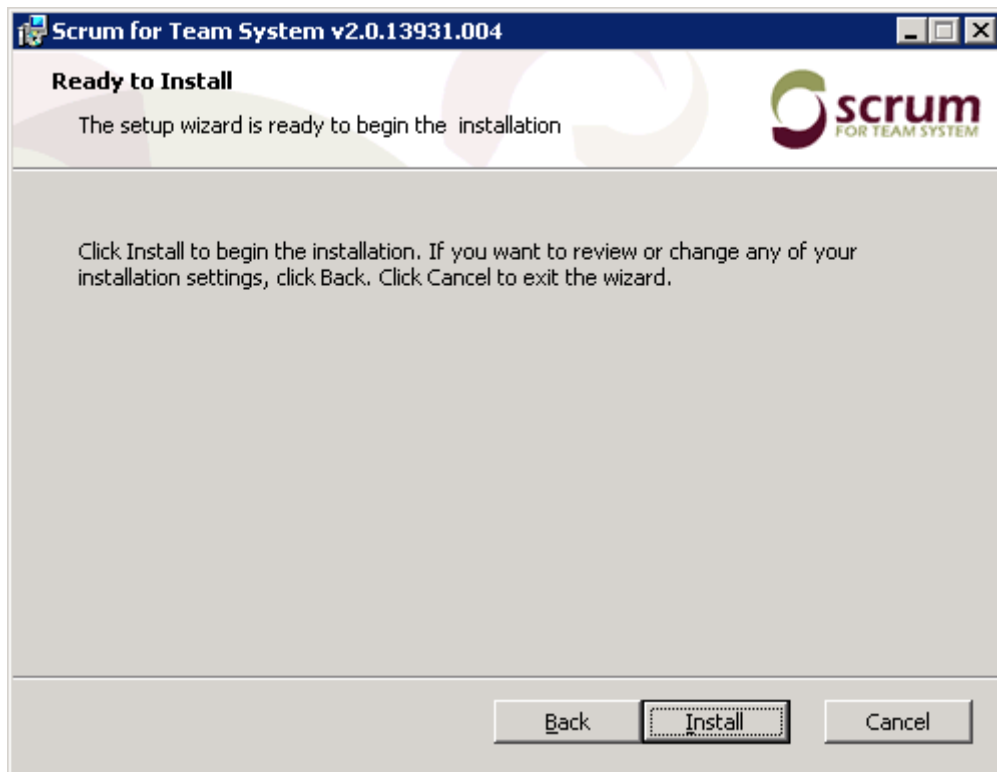


Figure 10

Once these steps have been completed the installation has collected all the information required and can proceed.

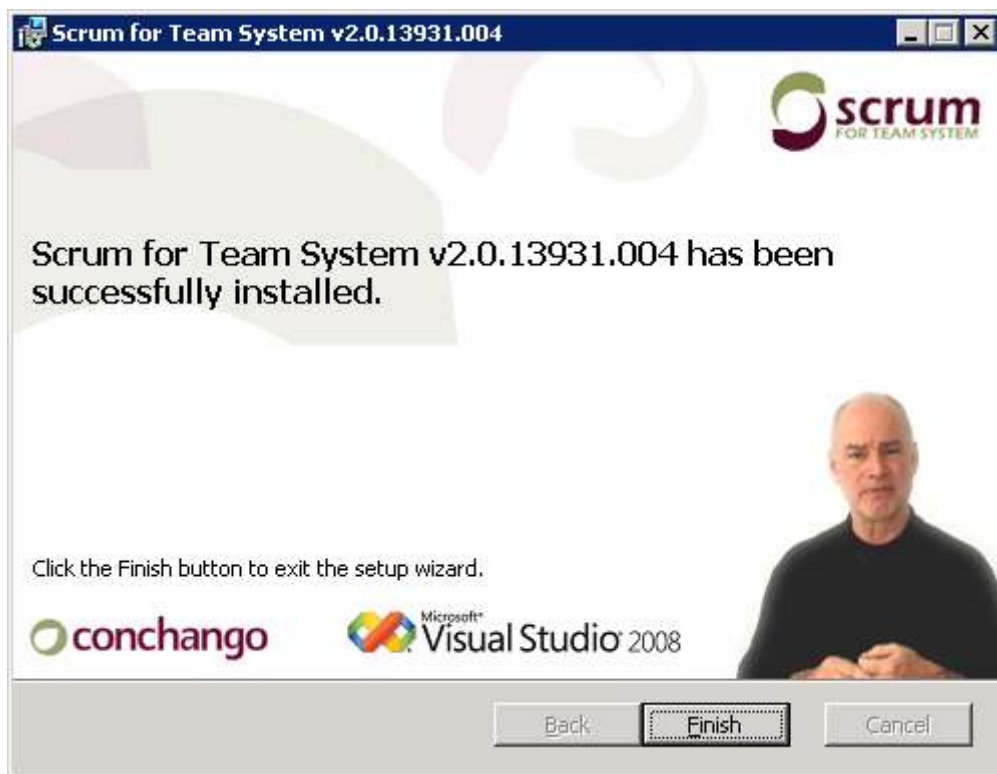


Figure 11

Once the installation steps have completed the WSS Template has been installed in the local farm.

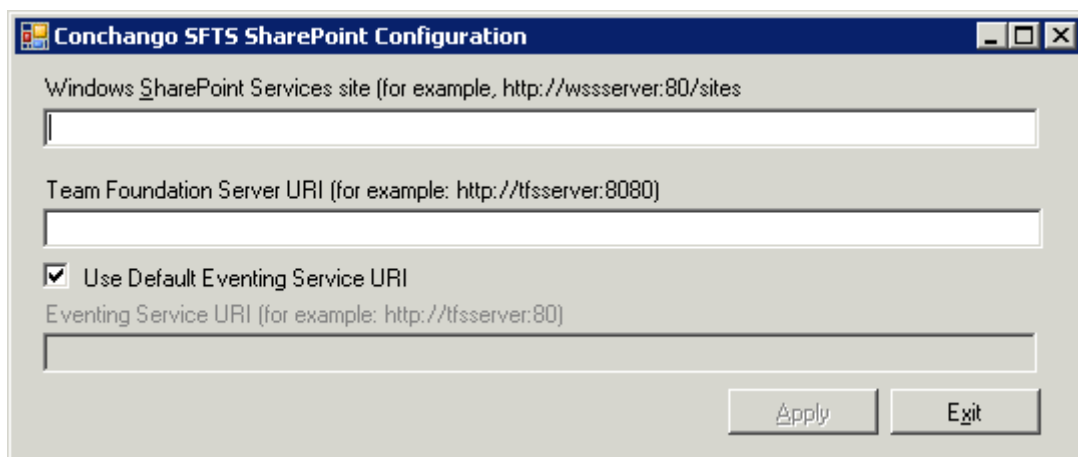


Figure 12

After installation the SFTS Template needs to be configured to communicate with the correct TFS instance. This is done by executing the SFTSConfigWSS executable which located in the Tools subfolder under the Install folder chosen in Figure 9. You will need to provide the URI to the WSS Site collection, the URI for the TFS Server web services and, optionally the URI for the Eventing Service.

Troubleshooting

If you experience issues with the installer please ensure that you try with the following settings:

- Running as TFSSetup (Or the account with which you installed TFS) which is a local Administrator
- Disable any running Antivirus applications, specifically if they block VBS files from running.

If you still experience problems community support is available from

<http://scrumforteamssystem.com/cs/forums/> which is actively monitored by the SFTS team.

Process Template Not Available

If after installation the Scum for Team System process Template is not available when trying to create a new team project the most likely problem is that the SFTS could not detect Microsoft Visual Studio Team Explorer 2008 on install, this would have only installed the WSS components as a result. Remove SFTS v2.0, install Team Explorer 2008 and then reinstall SFTS v2.0.