



PAESSLER

Software Solutions



Site Inspector

Contents

Welcome to Site Inspector	1
Introduction	2
Basic concepts	3
Features.....	5
Cross-Browser Features.....	5
Web Page Analysis.....	6
Element Highlighting	6
Pixel Grid and Guide Lines	7
Clipboard Tools.....	7
Resize and Zoom Tools.....	8
Online Tools.....	8
Installation	9
Requirements	9
Running Setup and Configuration	9
Installing Updates	13
Updates for the Freeware Version	13
Removing Site Inspector from your System	13
Removing Site Inspector from Firefox	13
How Site Inspector is organized	14
Navigating the Analyzing Browser	15
Using the Toolbar.....	15
Navigating Copy Meister	16
Analyzing Browser	17
IE / Mozilla.....	18
Forms.....	18
Images.....	19
Links.....	19
Scripts.....	20
Stylesheets	21
Metatags.....	21
Source	22
HTTP Headers	22
Whois.....	23
DNS	24
W3C – Markup Validation	24
W3C – CSS Validation.....	25

Toolbars	26
Setup.....	27
Analysis.....	30
Show All Forms.....	31
Show All Images.....	32
Show All Links.....	32
Show All Scripts.....	33
Show All Stylesheets.....	33
Show All Metatags.....	34
Show HTTP Header.....	34
Show Source.....	35
View Page in Firefox Mozilla.....	36
Complete Page Analysis.....	36
W3C – Markup Validation.....	36
W3C – CSS Validation.....	37
Run Simple Link Checker.....	37
Check Links and Code.....	38
Search Engine Checker.....	38
Check Domain Owner.....	39
Traffic Ranking.....	39
More Online Tools.....	40
Highlight.....	41
Copy.....	44
Resize.....	45
Zoom.....	46
Realtime Analysis.....	47
HTML.....	47
CSS.....	48
JS.....	49
UP.....	49
Context Menus	50
Context Menu for Internet Explorer.....	50
Context Menu for Firefox.....	51
Copy Meister	52
Using CopyMeister to Copy Webpage Content.....	52
Copy HTML Source.....	52
Copy Highlighted HTML Source.....	53
Copy Plain Text.....	54
Copy URL.....	55
Troubleshooting	56
Site Inspector Common Solutions.....	57
The toolbar of Site Inspector does not show up.....	57
The context-sensitive menu does not show up.....	57
The context menu does not show Site Inspector entries.....	57
Legal Information	57
Copyright.....	57
Disclaimer of Warranty.....	58

Welcome to Site Inspector

Introducing the “Cross-Browser Browser”

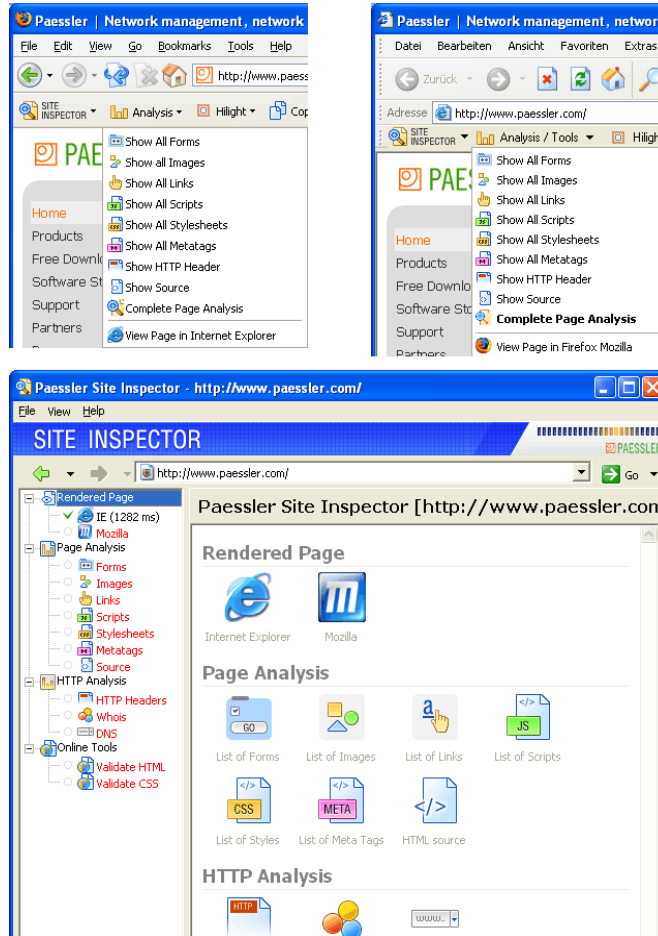
Site Inspector is a Web browser that combines the two most frequently used browser engines (Internet Explorer and Mozilla/Gecko) into one program. Its advanced analysis features make it the perfect companion for webmasters and web developers.

With Site Inspector’s very own browser, the Analyzing Browser, users can switch between the two browser engines with just one mouse click, e.g., to compare the rendering of a page in both browsers. The sophisticated analysis functions-which also integrate into Internet Explorer and Firefox-make analyzing and debugging web sites easy.

Comprehensive website analytics - always at hand

The analysis features can be accessed right inside the Analyzing Browser as well as in convenient Toolbars that Site Inspector adds to Internet Explorer and the ever more popular Mozilla Firefox browser.

This screenshot shows the analysis menu of both the IE and the Firefox toolbar as well as the main window of the Analyzing Browser.



Introduction

What can Site Inspector do for you?

Whenever you access a web page using Internet Explorer, Firefox or Site Inspector's browser you will find a wealth of analysis functions in the toolbars and menus, for example:

- For any given URL, users can access lists of the images, forms, links, frames, metatags or the scripts of a web page as well as the HTML source and HTTP headers.

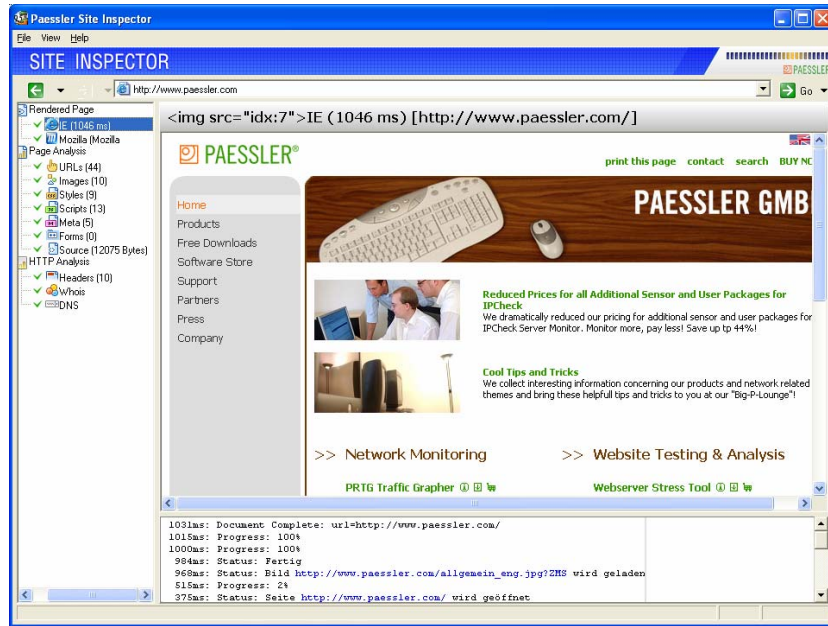
- Using the Highlight function, users can mark any HTML tag with a colored border inside the rendered web page (e.g., to show all TD tags in a page). An invaluable tool for web designers.
- A pixel grid as well as guide lines can be shown in a web page.
- All image tags and link URLs can be shown right inside a web page.
- HTML sources and Javascript files are shown using syntax highlighting.
- You can copy the page URL, page title, page source, list of URLs and even the page as bitmap to the clipboard.
- The browser window can be resized to various standard screen sizes (e.g. 800x600) and you can zoom into a web page.
- A fine selection of tools that are available online (e.g. "CSS/HTML validation", "link checking", "ping the server", "traceroute the server", "show domain owner", "W3C markup validation") is already included and can be customized.

Site Inspector can provide you with a wealth of information about any website that you visit. Some typical users include

- **Web developers**—HTML and Web programmers can use Site Inspector to see how others have created their sites from nested tables to active image links, test response times for pages, get an overview of images used, and other tasks which simplify the process of generating HTML code and web pages in general.
- **General web users**—everyone can benefit from Site Inspector's tools and information. For example, users can zoom-in on a Webpage, resize their browser window, or search an entire domain using Google® search technology. It is possible to trace the origin of a domain, find out the owner of a specific domain, and other useful features which will expand the possibilities of web browsing way beyond the standard capabilities of Internet Explorer® and Firefox Mozilla.

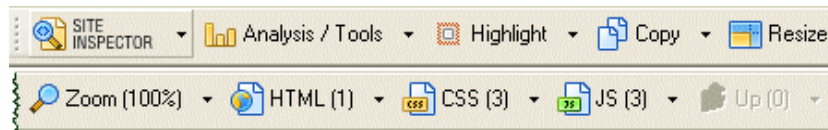
Basic concepts

Site Inspector's Analyzing Browser is accessed by clicking the appropriate function button in the Toolbar or using the context menu.



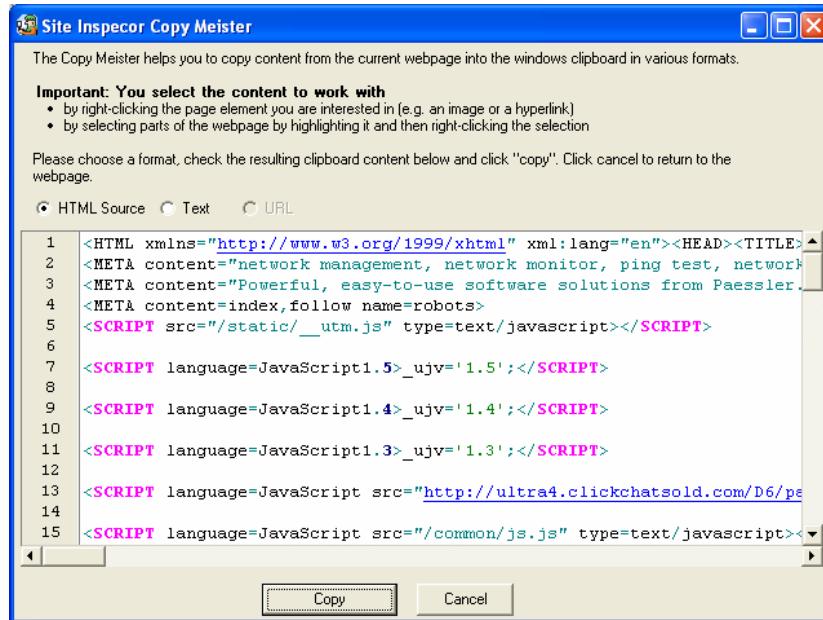
Analyzing Browser—this is a report-style window with navigational tree that provides detailed information about a website as well as the ability to search, check the domain registrar, and many other online resources.

The Toolbars – One of the main ways to access the functions of Site Inspector is the Toolbar, which appears below the standard Internet Explorer toolbar, at the top of your browser.



To access the functions one merely needs to click on one of the buttons to open a drop-down menu and activate the desired function. More information on the toolbar can be found in the **Toolbar** chapter further on in this manual.

If the Toolbar should not be available after launching Internet Explorer, consult the **Toolbar** chapter for further information.



Site Inspector Copy Meister—this is a pop-up window that allows you to quickly copy underlying HTML or link data to your Windows clipboard. By right-clicking on a webpage object and selecting the **Site Inspector Copy Meister** Option from the toolbar or the context-sensitive menu, you can capture the object's HTML and copy it to your clipboard for later use.

Features

Site Inspector combines advanced website analytics with Internet Explorer and Firefox browsers

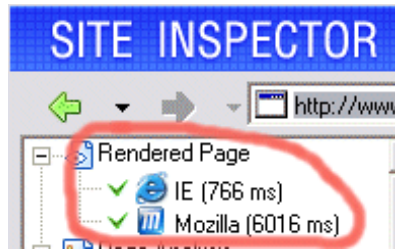
- Includes stand alone browser application "Analyzing Browser" with Mozilla and IE browser engine built into one application
- Analysis tools are available in toolbars and context menus inside the Analyzing Browser as well as in IE and Firefox

Cross-Browser Features

Site Inspector is a true "cross browser" application because it supports both the Internet Explorer and the Firefox/Mozilla browsers in three ways:

- Site Inspector's stand alone browser application "Analyzing Browser" combines both browser engines into one application
- Site Inspector's comprehensive toolbars are available in all three browsers: IE, Firefox and Analyzing Browser
- Site Inspector adds various functions to the context menus of IE and Firefox

You can switch between IE and Firefox with one mouseclick in the Analyzing Browser (the screenshot shows the corresponding two menu items).



Also you can switch between the main windows of IE and Firefox with a menu item of their toolbars.

Web Page Analysis

Site Inspector displays various (usually invisible) parts of any web page

- HTML source (syntax highlighted),
- CSS source (syntax highlighted)
- Script source (syntax highlighted)
- Images
- FORMs
- Links
- Meta Tags
- Frameset Source (for frame pages)
- HTTP Headers sent by the server (including status code, server information, content type, etc.)
- WHOIS and DNS

Element Highlighting

Using element highlighting all HTML elements of a webpage can be marked with a colored border, background or text for a fast overview of the web page's structure.

Using so called "element highlighting" all HTML elements of a webpage can be marked with a colored border, background or text for an in depth overview of the web page's structure. This screenshot shows this feature: `<table>` tags are marked with a black border, `<td>` tags with a red dotted border and `<a>` tags with a solid red border.



You can even hide (and show) all HTML elements of a specific type, e.g. you can hide all links or images.

For all links the linked URL and the HTML code of the <a> element can be shown right inside the webpage as well as the HTML code and the image URLs for all images

Show Links

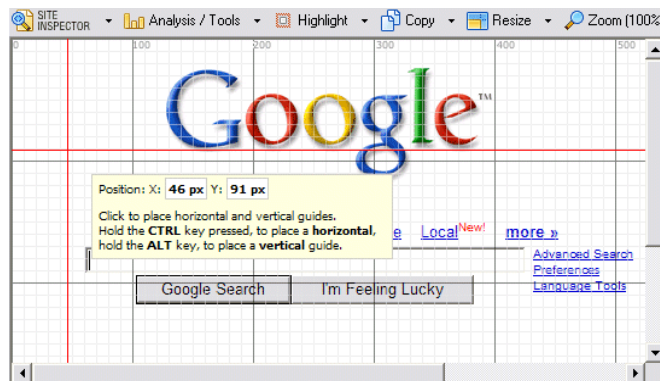
```
href=javascript:window.print(); print this page
href=http://www.paessler.com/contact/index_eng.html contact
href=http://www.paessler.com/search/index_eng.html search
href=http://www.paessler.com/order/index_eng.html BUY NOW
```

Show Image Paths

```
src=http://www.paessler.com/common/eng_hi.gif
src=http://www.paessler.com/common/ger_hi.gif
```

Pixel Grid and Guide Lines

Site Inspector can overlay a pixel grid and customizable guide lines on top of a webpage, e.g. for pixel-by-pixel design checks.



Clipboard Tools

The Site Inspector toolbars and context menus offer various options to copy information from the current web page to the clipboard, including

- Copy page URL

- Copy page title
- Copy title/URL as a HTML anchor tag
- Copy page HTML Source
- Copy page as bitmap (browser screenshot)
- Copy list of URLs (URLs only or as HTML)
- Copy list of image URLs (URLs only or as HTML)

Additionally, using the "Copy Meister" you can copy the complete web page HTML or parts of it to the clipboard (as plain text, HTML or highlighted HTML).

Resize and Zoom Tools

With just a mouse click you can resize the browser window to the most common screen sizes (e.g. 800x600, 1024x768) to check how a page looks like in other resolutions. Also you can zoom into and out of the current web page.

Online Tools

Site Inspector's toolbar includes a fine selection of tools that are available online. These online tools can be customized by the user.

- Markup and CSS Validation by w3c.org
- Various link and code checks
- Various search engine checks
- Find out domain owner
- Alexa traffic ranking
- Trace route and PING
- Web site speed and optimization checks
- Accessibility checks
- Webarchive webpage history
- Google similar pages and backward links

Please note that these tools are subject to changes, e.g. by their respective providers on the Web.

Installation

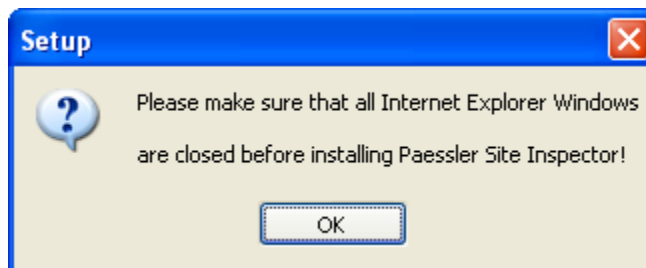
The installation of Site Inspector on Windows 98/ME/2000/XP/2003 is very easy. Simply download the installation files from www.paessler.com/psi/download and run the installer.

Requirements

Site Inspector requires Microsoft Internet Explorer version IE 6.0 or later, Windows 98/ME/NT/XP/2000/2003 and optionally Firefox 1.0. Previous versions of Internet Explorer (including version 5.0/5.5) are NOT supported.

Running Setup and Configuration

First of all, please make sure that all Internet Explorer windows are closed before installing Paessler Site Inspector.

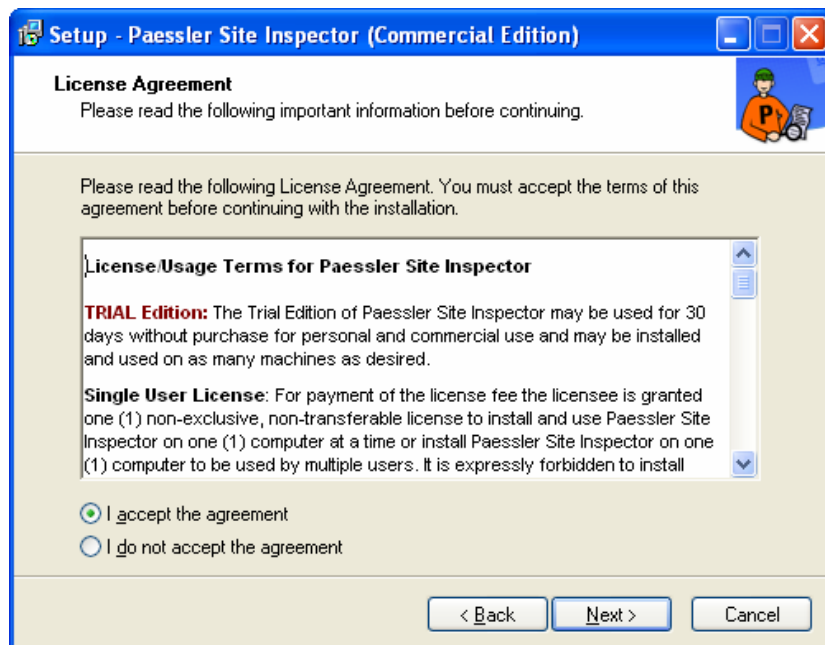


Running the setup program and configuring Site Inspector is easy. To get started

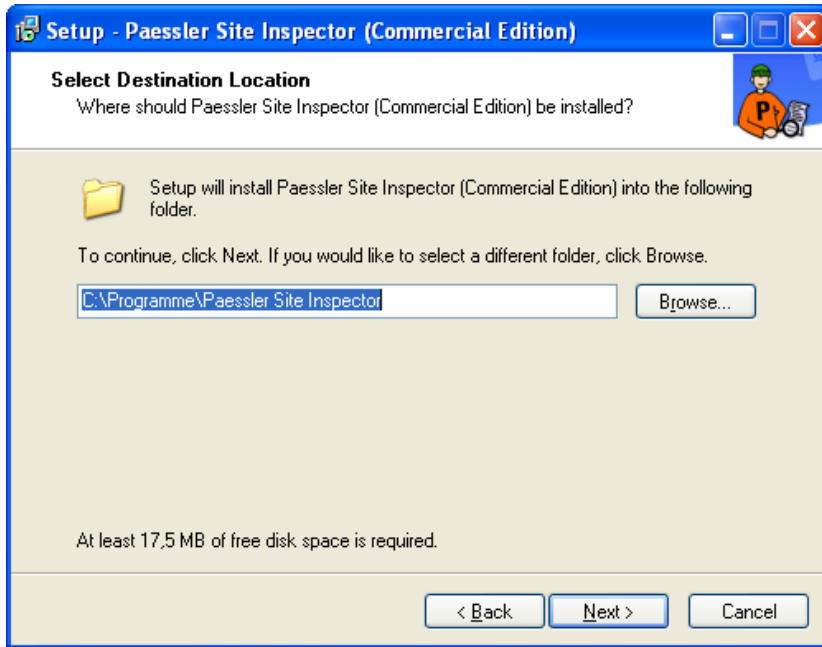
- Double click on the Paessler Site Inspector 4.0.xxx Setup (Standard Version).exe program that was provided to you when you downloaded the trial version or when you ordered the full version. This will bring up the **Site Inspector Installation Wizard**.



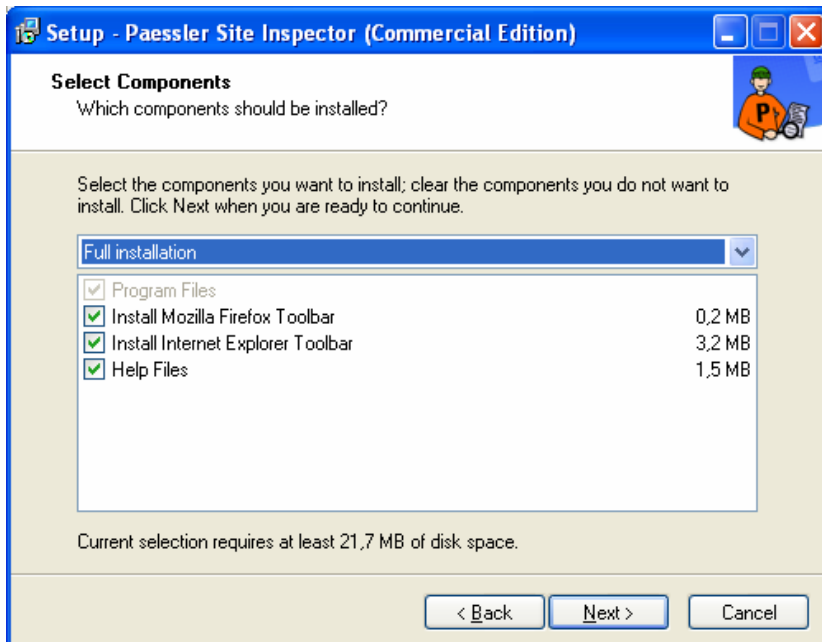
- The first screen of **Site Inspector Installation Wizard** welcomes you to the application. Click the **Next Button** to continue.



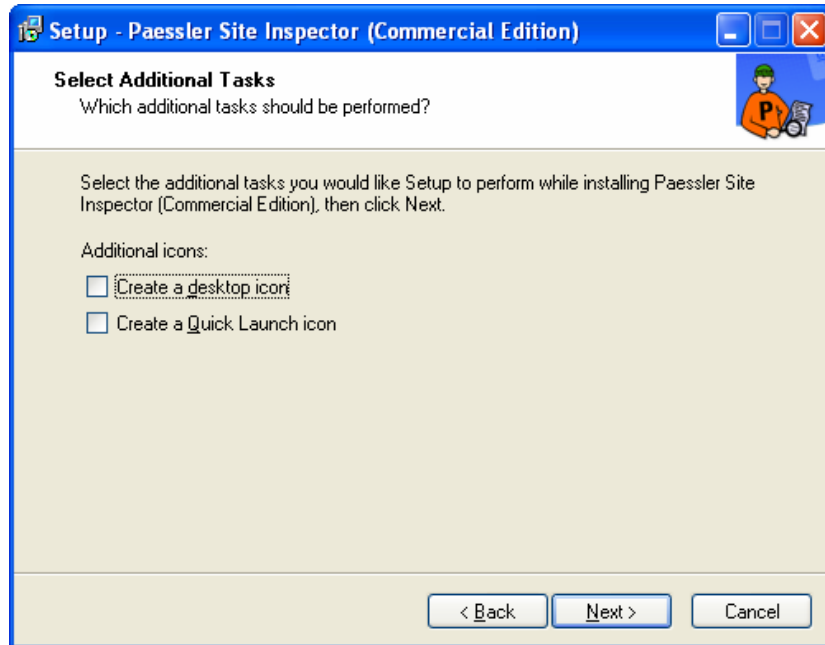
- The first step in completing the setup and configuration of Site Inspector is to accept the license and usage terms. Please select to either accept or not accept the license agreement and then press the **Next Button**.



- The next step is to select the folder on your hard drive where you would like to install the Site Inspector files. If you want to install Site Inspector in a different directory as the default, click on the “Browse” button and select a directory into which you wish to install Site Inspector. The Installation Wizard also tells you how much hard drive space Site Inspector requires. When you have specified the location, click the **Next Button**.

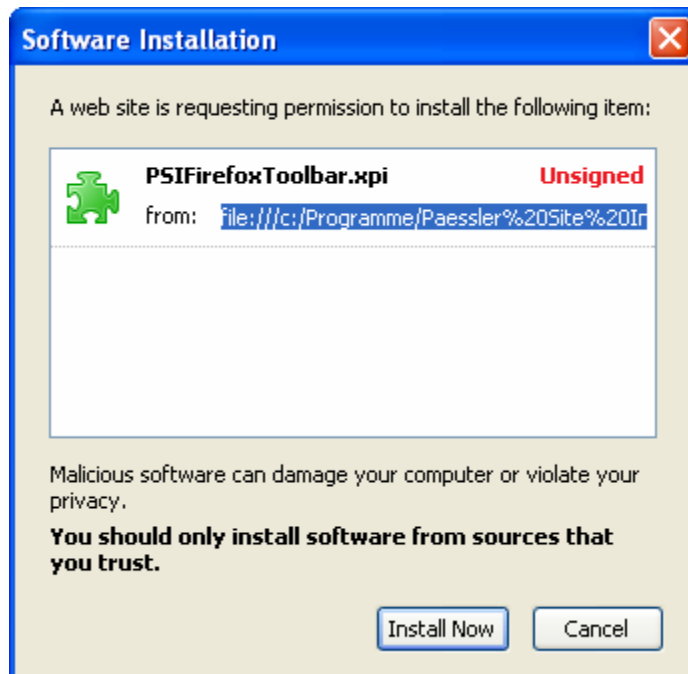


- The following step is to select which components to install. Your options are “Full installation”, “Compact installation”, and “Custom Installation”. Custom installation allows you to choose which elements of the software you want to install. Once you are satisfied with your selection click the **Next Button** to continue.



- Finally, you will be asked whether to add icons to your desktop and / or create a quick launch icon. Check the appropriate checkboxes and then press the Next Button. This should finish the installation of PSI on your machine.

Note: When installing the software for Firefox, once Firefox is detected, the following Window will open:



Click on **Install Now** in order to install the Firefox Toolbar utility. Then please close and restart Firefox.

Installing Updates

Updating Site Inspector to a higher version or patch release is easy.

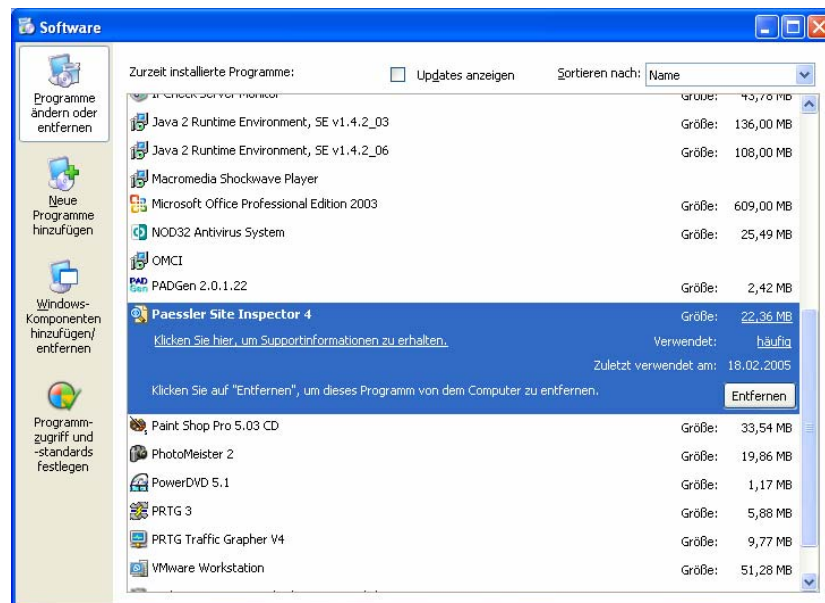
Updates for the Freeware Version

Simply download from www.paessler.com/download and install the new version. Be sure to close all Internet Explorer browser windows before running the new setup.exe.

Removing Site Inspector from your System

There are two ways to uninstall Site Inspector from your system. The first way is to select the **Uninstall Site Inspector** from the Site Inspector Program Manager group available in your Start Menu.

The second way is to use the **Add/Remove Icon** in your Windows Control Panel.



- Click on the **Change/Remove Button** to uninstall Site Inspector from your system.

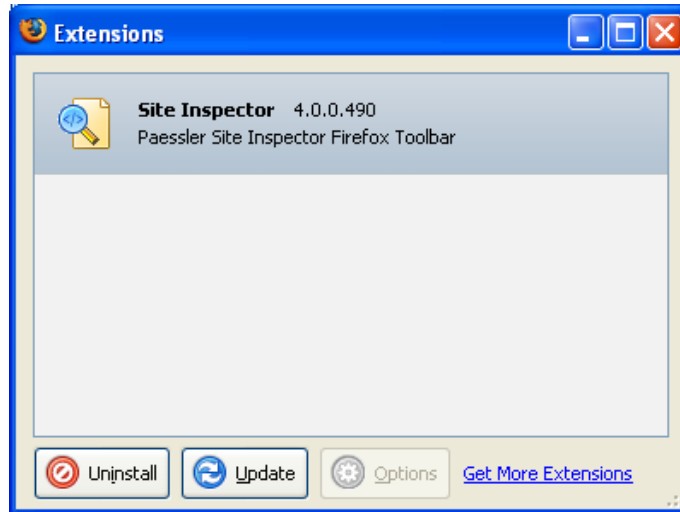
Note: The above uninstallation process described through the Control Panel was done through Windows XP Professional. For detailed information about how to uninstall through the Control Panel on other Windows Operating System versions see your operating system documentation.

Removing Site Inspector from Firefox

In order to remove the toolbar from Firefox Mozilla, the following steps have to be taken:

- Start Firefox

- Under **Tools** go to **Extensions** and click on this field – this should launch a new window from which you can select the extension you wish to uninstall



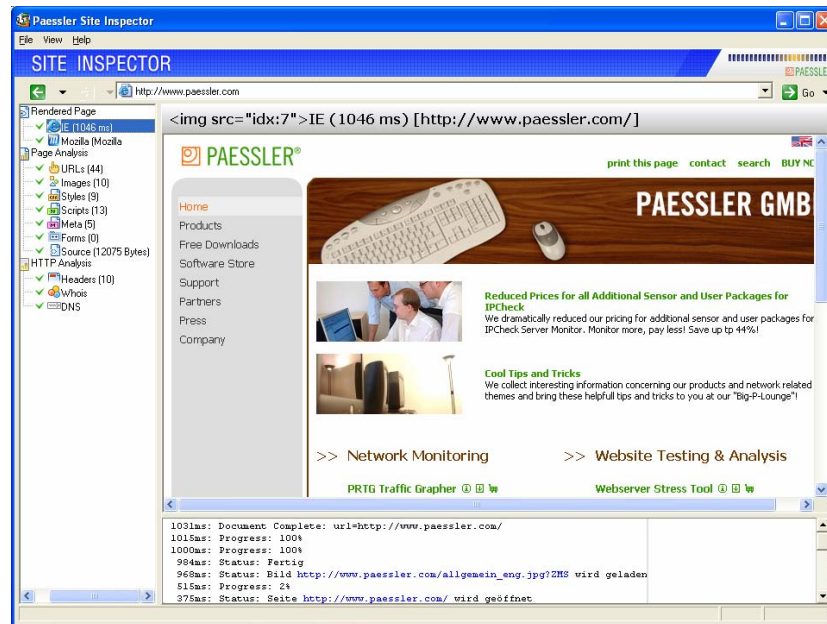
- Click on the **Uninstall** button – this should remove Site Inspector from your Firefox installation.

How Site Inspector is organized

Site Inspector is designed to make accessing features and information as quick and easy as possible.

The analysis features can be accessed right inside the Analyzing Browser as well as in convenient toolbars that Site Inspector adds to Internet Explorer and the ever more popular Mozilla Firefox browser.

Navigating the Analyzing Browser



Select an analysis type by clicking on its name in the left-hand navigational tree. The information will appear in the right-hand window.

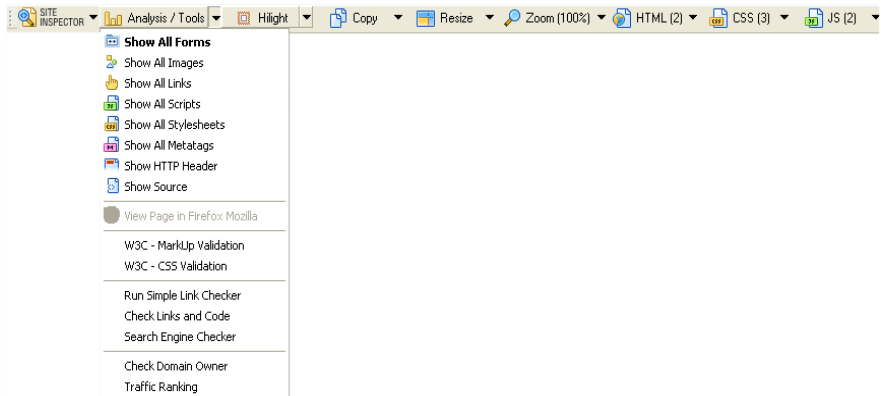
You can expand or collapse analysis categories by clicking on the “+” or “-“ next to their name.

Types of analysis include

- **Rendered Page** (IE or Mozilla)
- **URLs**
- **Images**
- **Styles**
- **Scripts**
- **Meta (tags)**
- **Forms**
- **Source**
- **Headers**
- **Whois**
- **DNS**
- **Various Online Tools**

Using the Toolbar

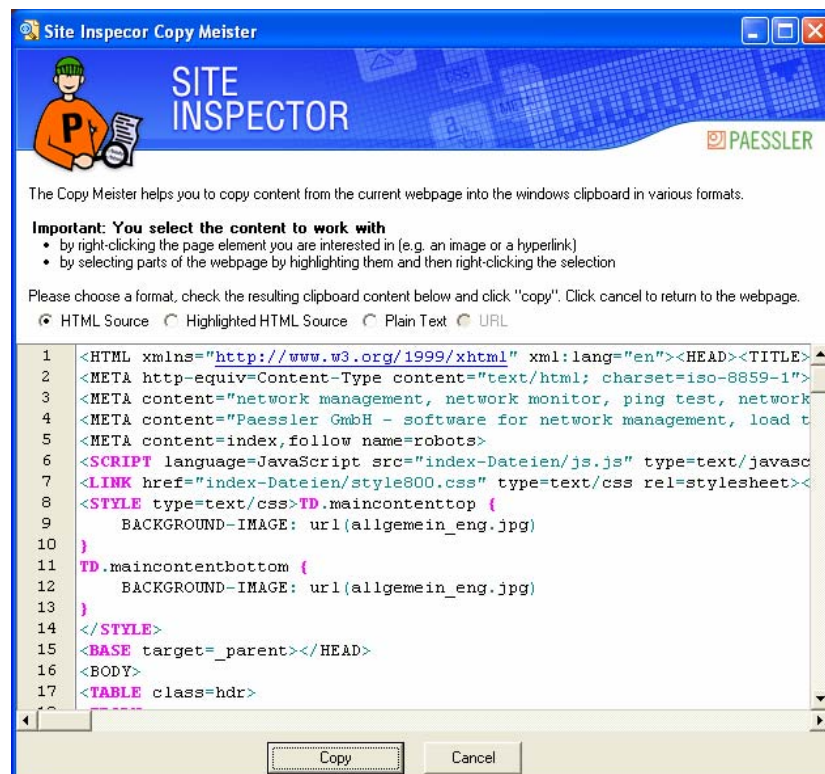
The Toolbar functionality is accessed by pressing the appropriate button and selecting a function from the drop-down menu.



After clicking on the desired function, this function is launched and, generally, a new window opens displaying the desired information. The Toolbar offers the following options, each with a sub-set of functions available as a drop-down menu:

- **Site Inspector**
- **Analysis**
- **Hilight**
- **Copy**
- **Resize**
- **Zoom**
- **Realtime Analysis** (for HTML, CSS, and JS)

Navigating Copy Meister

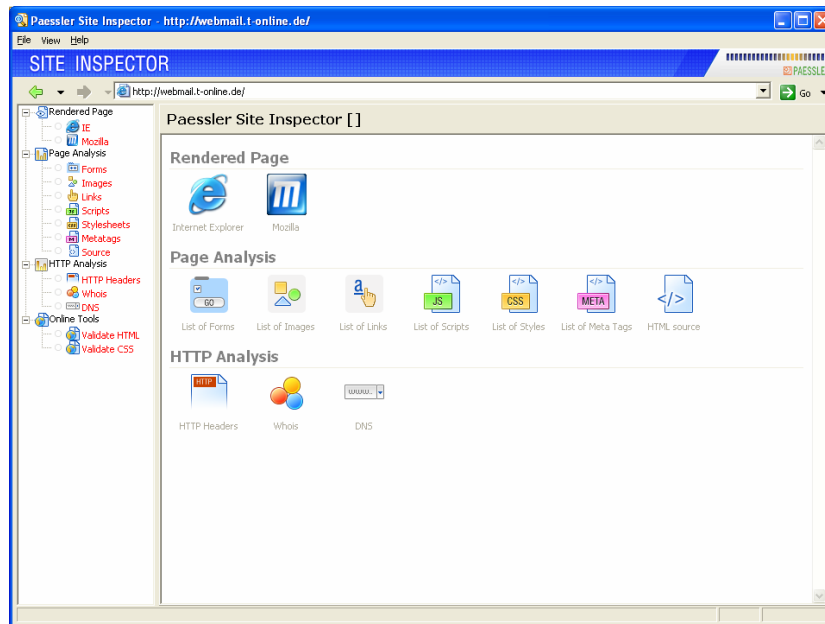


Select the format of how you want to copy the webpage object(s). Available formats include:

- **Copy HTML Source**
- **Copy Highlighted HTML Source**
- **Copy Plain Text**
- **Copy URL**

Analyzing Browser

The **Analyzing Browser** can be considered the heart-piece of Site Inspector. Here, one is provided with a multitude of functions that range from displaying the rendered page either as depicted by Internet Explorer or Mozilla (using the Gecko engine) to listing the source code of the rendered page.

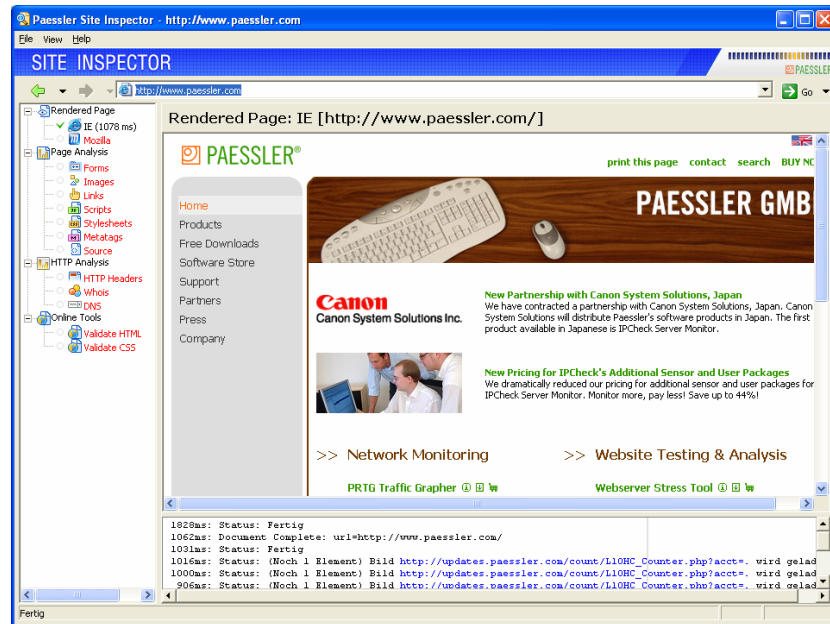


Clicking on a category in the tree-menu (left) highlights that information and displays it in the Main Window. Each category of information is accessible by clicking on the category name or clicking on the category box in the opening window. The information will be opened in the Main Window.

The Analyzing Browser can be launched separately either from the Toolbar or from the program group in which you installed PSI.

Note: When an X appears in front of a function, it means this function is not available, i.e. this analysis function is not applicable for the current URL.

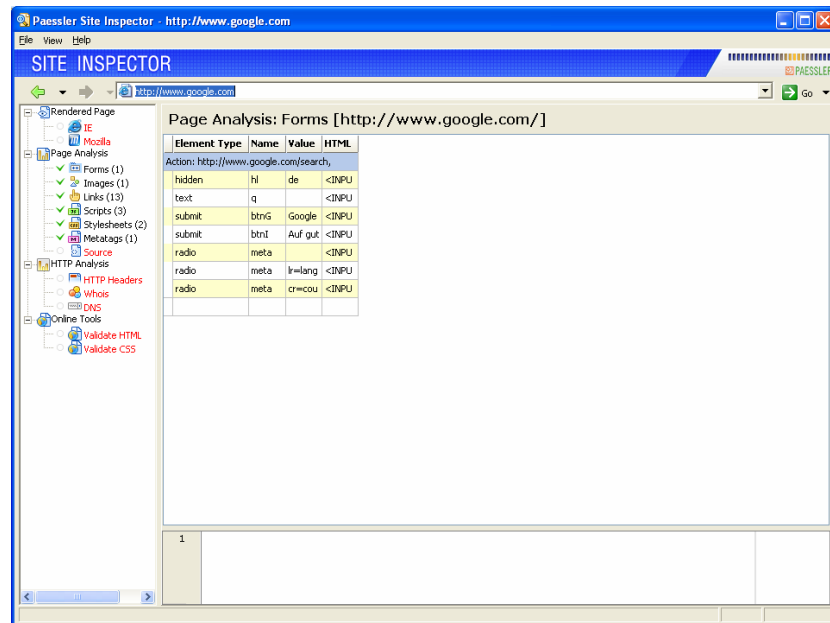
IE / Mozilla



This function allows you to browse the active page either as viewed with Internet Explorer or Mozilla (using the Gecko engine).

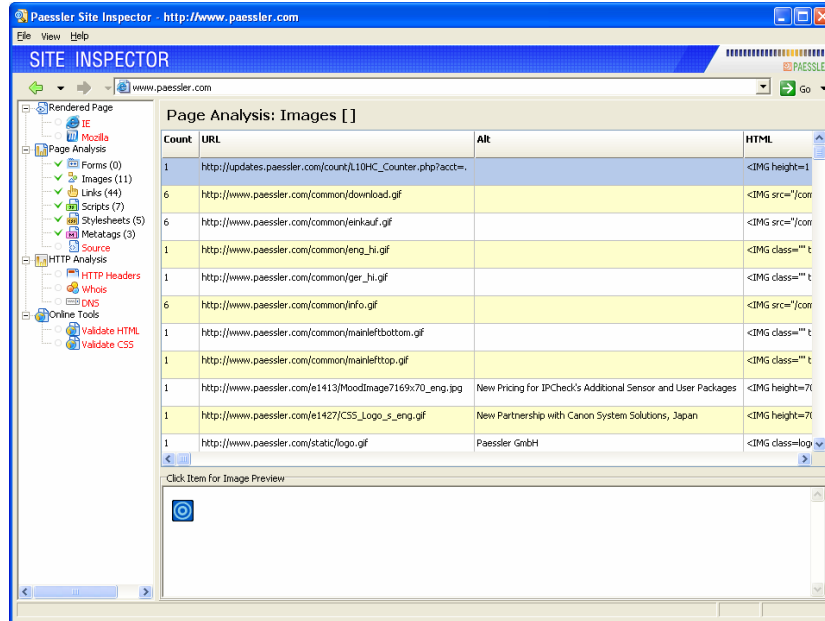
Tip: You can toggle between both browser functions using CTRL + 1 and CTRL + 2.

Forms



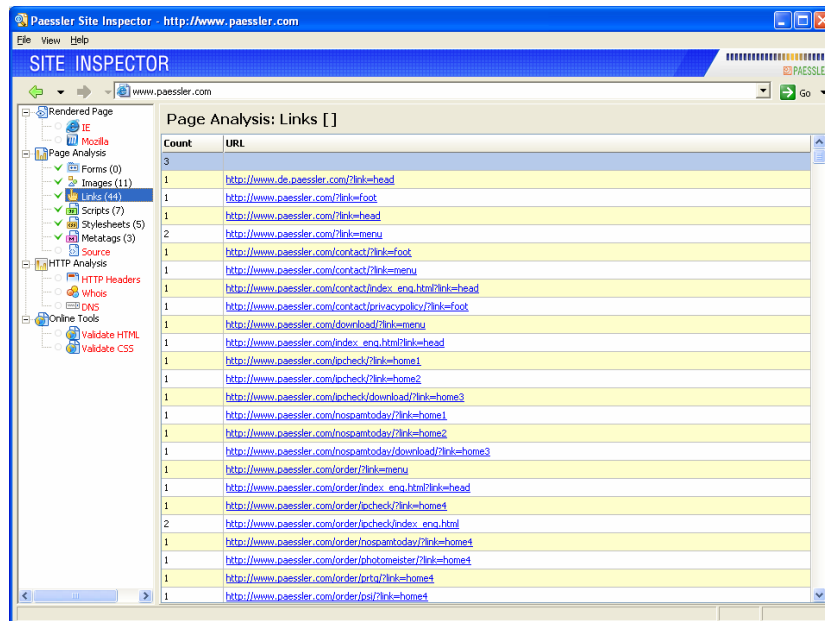
This function shows information regarding the forms that are available in the open webpage. These are respective to the information found between the <form> tags.

Images



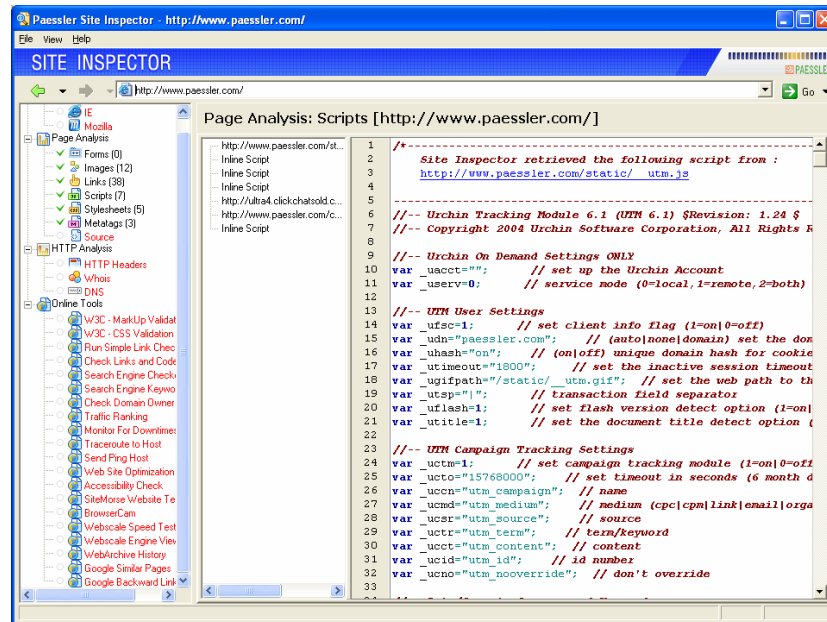
This function shows a listing of all images encountered within tags on the active webpage. Detailed information about the image is shown next to the image link. The image itself is shown at the bottom of the screen.

Links



This function shows a listing of all hyperlinks encountered on the active webpage. It displays information regarding links by protocol, as well as links to hosts.

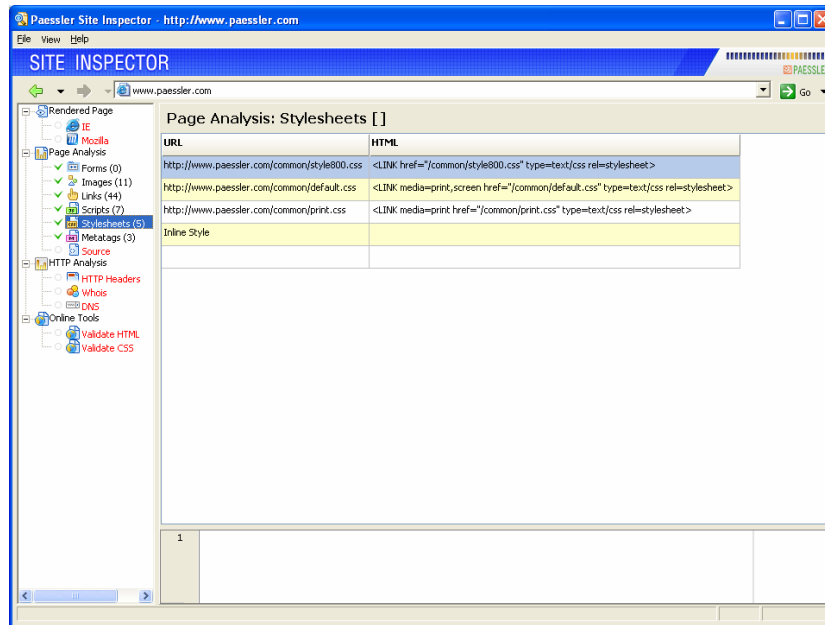
Scripts



This function shows a listing of scripts encountered on the active webpage. This feature is especially interesting when the analyzed page contains more than one script block or includes several external scripts, because they are all displayed on one page.

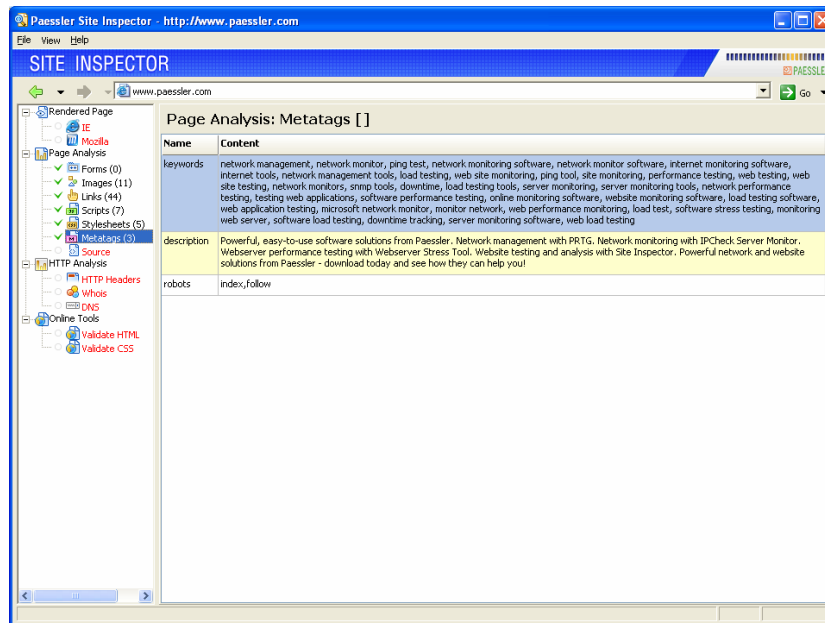
Pressing CTRL + F will open the find function.

Stylesheets



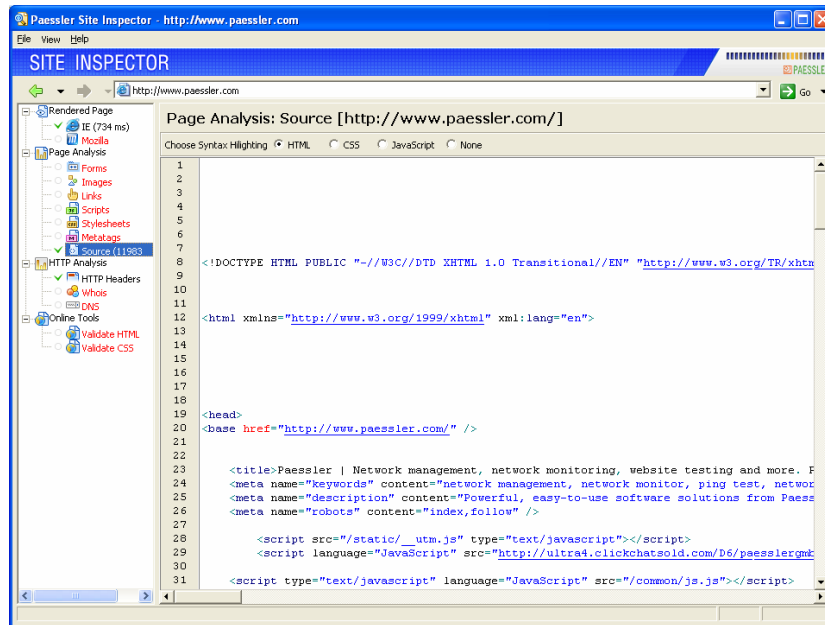
This function shows a listing of the stylesheets encountered on the active webpage.

Metatags



This function shows all meta tags from the selected web page.

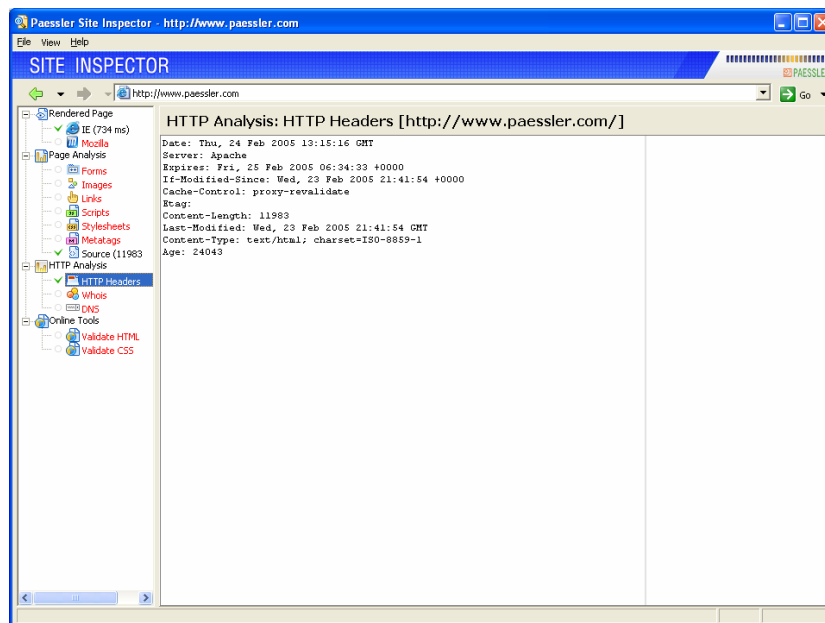
Source



This function displays the source code of the page. The source is interpreted into a Tree Structure by the Analyzing Browser. The source is called from within the page's root and, as such, the actual source of the page (not the parsed source) will be shown.

Pressing CTRL + F will open the find function.

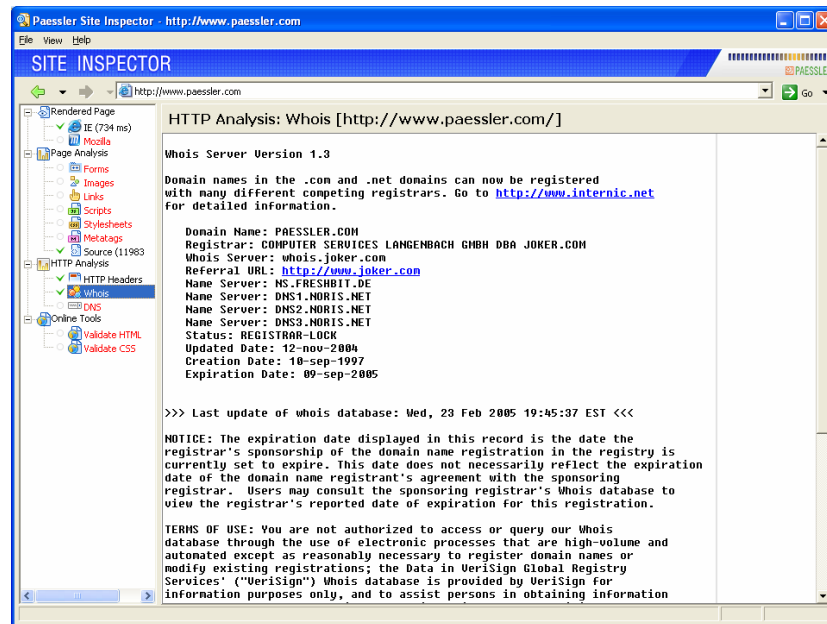
HTTP Headers



This function shows information about a webpage that is sent to your browser when you request it. This header information helps your browser understand what type of

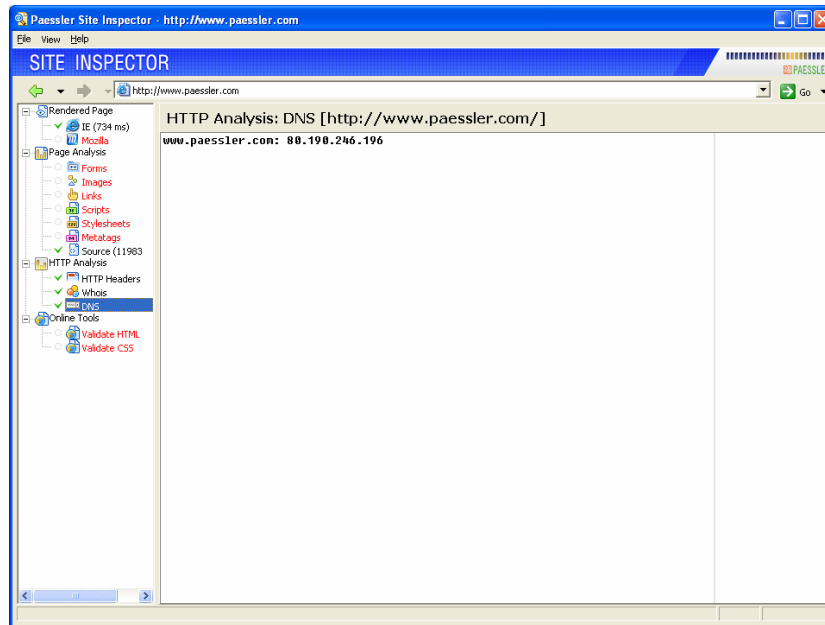
resource you have requested (the mimetype of the information sent by the server, i.e., script, webpage, image, movie, etc.) and how to display it. In most cases you can also get information about the file size of the request as it is disclosed in an optional content-length property and the status code of the web request (e.g. 200 for OK, or 404 for a "not found").

Whois



This will send a WHOIS query to report the owner of the domain at which the page you are browsing is located.

DNS



This will display the IP number of the page that is currently being browsed.

W3C – Markup Validation



This passes the information on to the W3C consortium in order to validate the URL against current standards.

W3C – CSS Validation



The **W3C CSS Validation** tool will send the URL of the CSS file (whether **inline** or **external**) to the W3C for validation.

Further functions of the Online tools include:

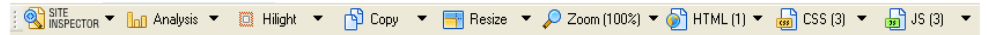
- **Run Simple Link Checker**
- **Check Links and Code**
- **Search Engine Checker**
- **Search Engine Keywords Checker**
- **Check Domain Owner**
- **Traffic Ranking**
- **Monitor for Downtimes**
- **Traceroute to Host**
- **Send Ping Host**
- **Web Site Optimization**
- **Accessibility Check**
- **SiteMorse Website Test**
- **BrowserCam**
- **Webscale Speed Test**
- **BrowserCam**
- **Webscale Engine Viewer**
- **WebArchive History**
- **Google Similar Pages**

- **Google Backward Links**
- **Any many more**

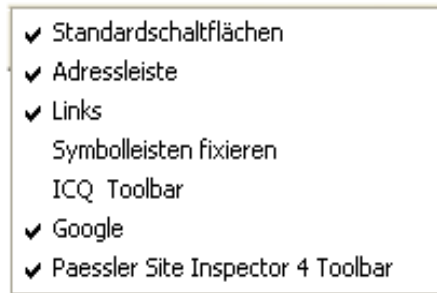
Online tools can be edited and personalized. Please read the setup section of this manual for more information. Please note that these tools are subject to changes, e.g. by their respective providers on the Web.

Toolbars

After Analyzing Browser the **toolbars** – that plug into IE and Firefox - are the alternative means for accessing the functionality of Site Inspector. Site Inspector automatically installs the toolbar to access the vast majority of its functions directly from Internet Explorer® or Firefox Mozilla. This toolbar will appear underneath the standard toolbar options (see image).

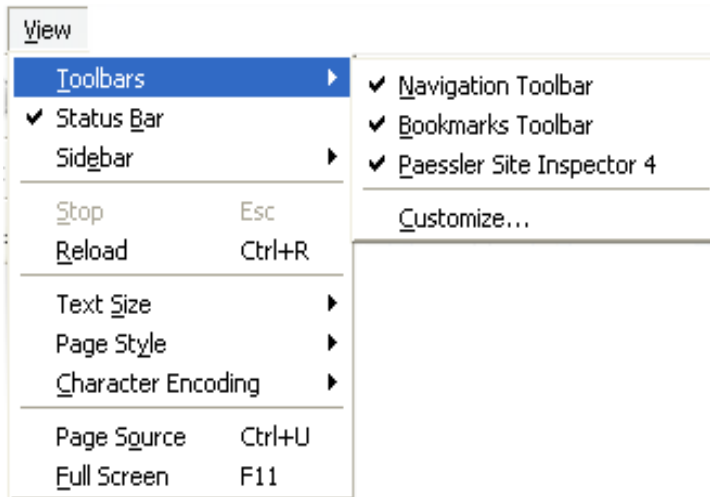


Should the toolbar not show up after proper installation, right click on the main Internet Explorer standard toolbar and select to show the Paessler Site Inspector Toolbar by clicking on the option in the appearing menu.



Should the toolbar be removed far to the right and out of the frame of Internet Explorer, please unlock the toolbar's position and drag it to a comfortable position.

Note for Firefox users: Alternatively, in Firefox, you can turn on the toolbar by selecting the option from the **View** menu under **Toolbars**.

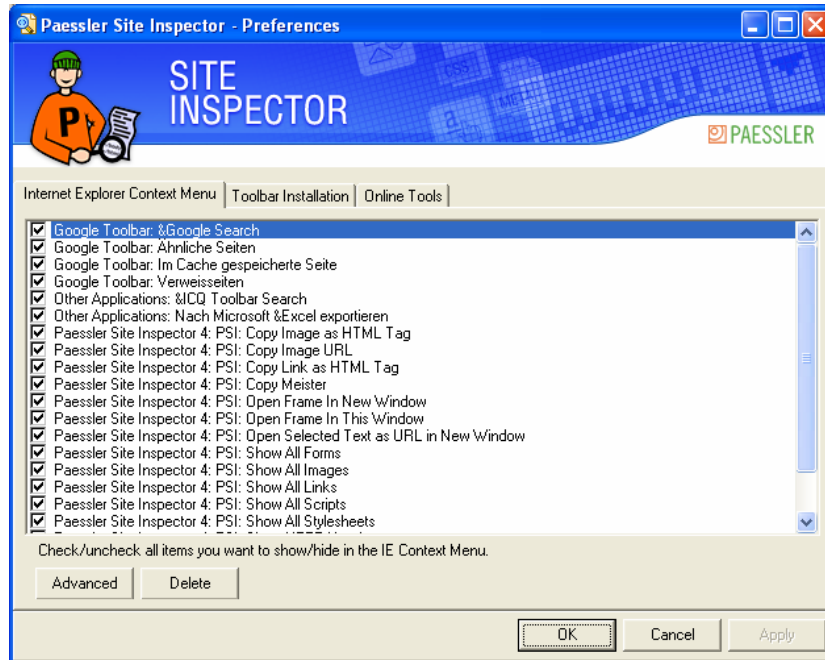


Setup



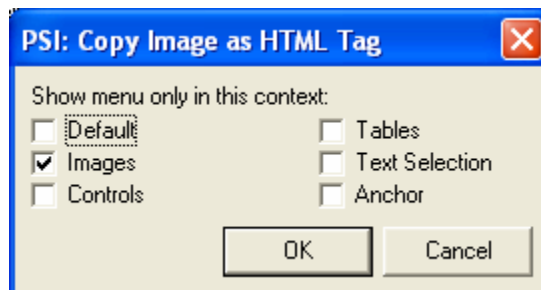
The setup button offers the ability to order the software or to visit the Site Inspector homepage – this may be useful for finding out information as regards updates, as well as to check the Frequently Asked Questions (FAQs) and accessing other information.

The **Preferences...** field will open a new window which will allow to edit the functions that are to be made available (or unavailable) when using Internet Explorer's context menu (including elements not belonging to PSI).

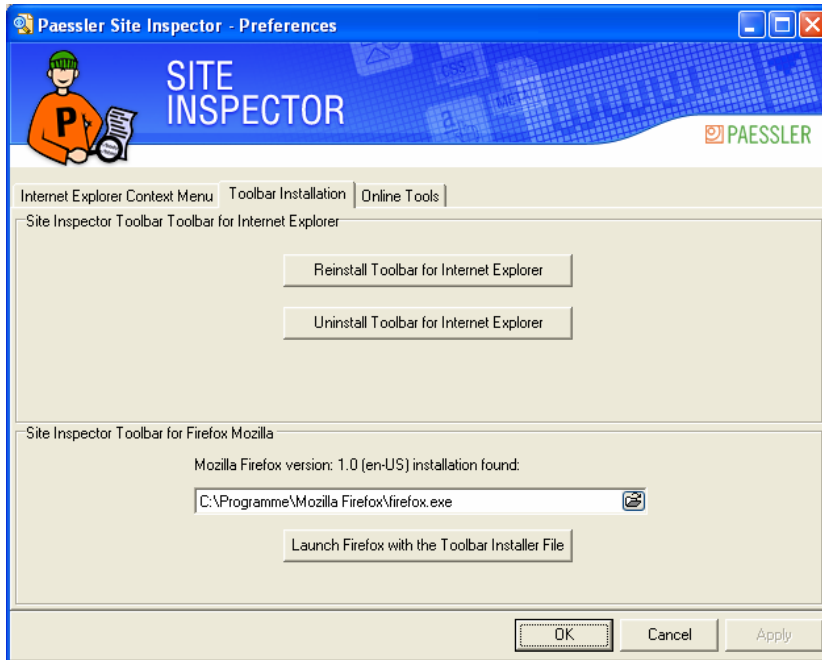


Check a function to make it available when using the context menu and uncheck it in order to make it unavailable. Further information as regards the functions themselves can be found under the chapter **The Context Menu**.

Using the Advanced button, one has access to a small menu which allows to turn certain functionalities on / off. Here one can edit what sort of dependency each functionality is to have as regards the interaction with the respective image, tag, or HTML element.

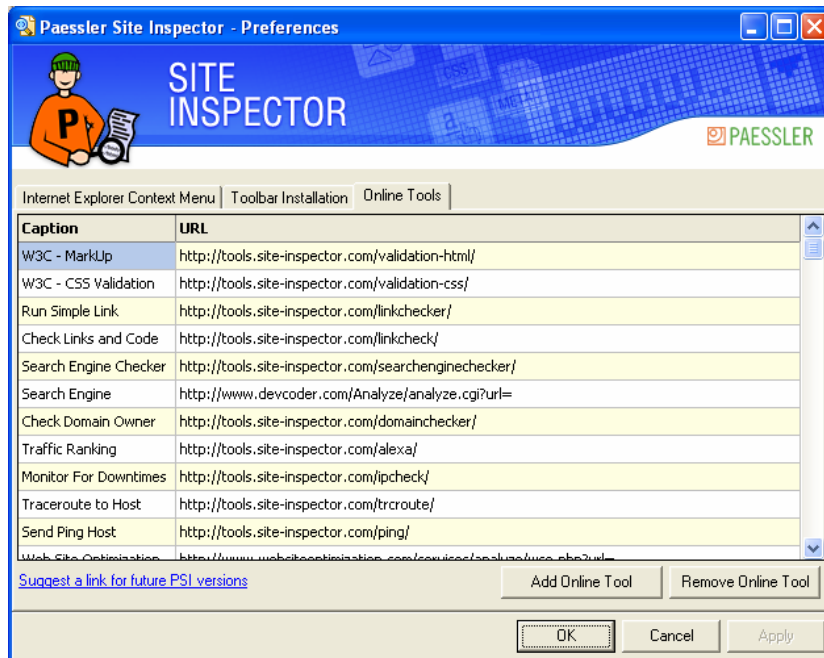


Selecting the **Toolbar Installation** tab will bring forth the following window:



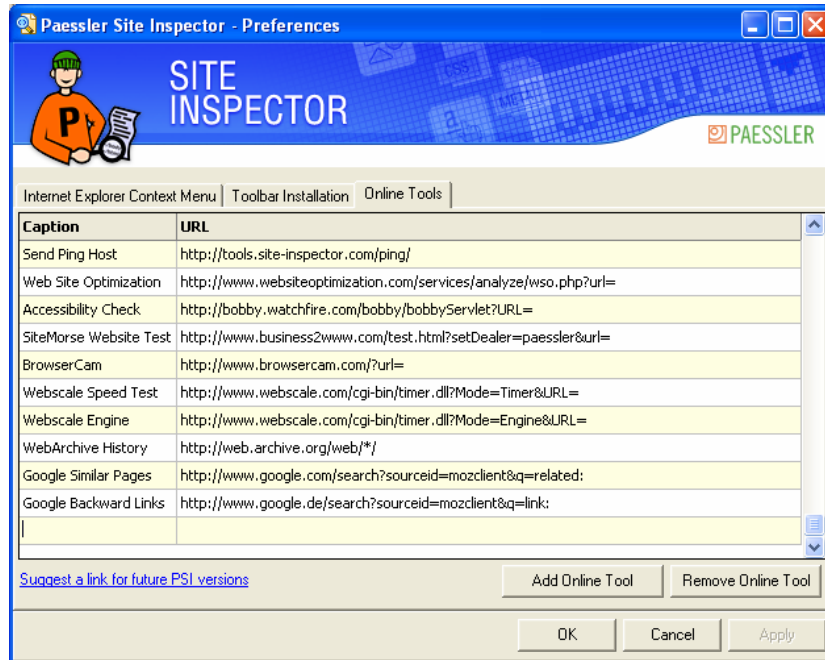
Here, you can opt to reinstall / uninstall the toolbar component for Internet Explorer, as well as launch the toolbar installation functionality for Firefox Mozilla.

Selecting the **Online Tools** will bring forth the following window:



Here it is possible, using the **Add Online Tool** and the **Remove Online Tool** to edit the online tools. Adding an online tool will allow you to enter a caption (name) and a URL encoded function (in the fields provided) which will then be integrated to the toolbar.

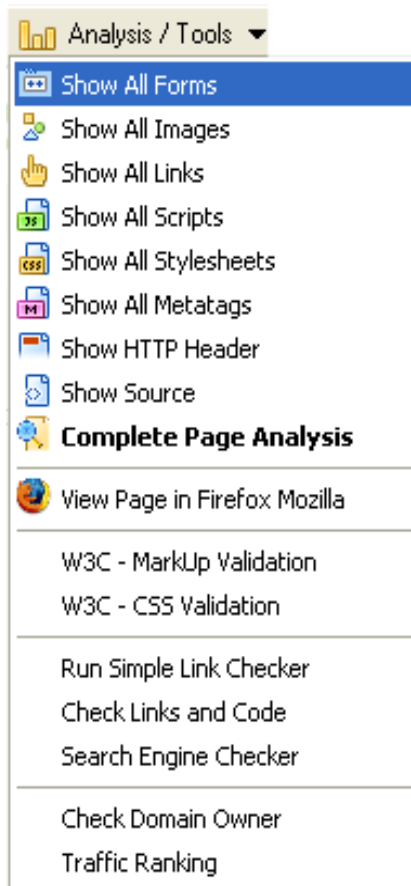
The online tools are called with an URL, using the current URL found in the browser for tool purposes.



Once you have defined your new online tool, merely click on the OK button to accept the settings. To remove an existing, defined online tool, please proceed to click on the Remove Online Tool button and then press OK – this will remove the desired tool permanently.

Analysis

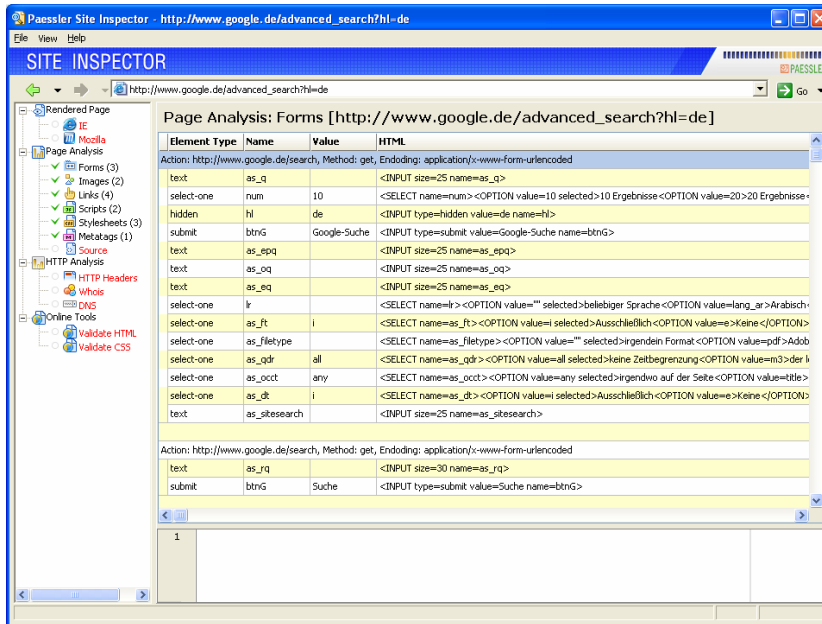
One of the main functions of Site Inspector is the analysis of webpages.



With this feature it is possible to identify the elements of webpages and analyze multiple functions. The options of this button are:

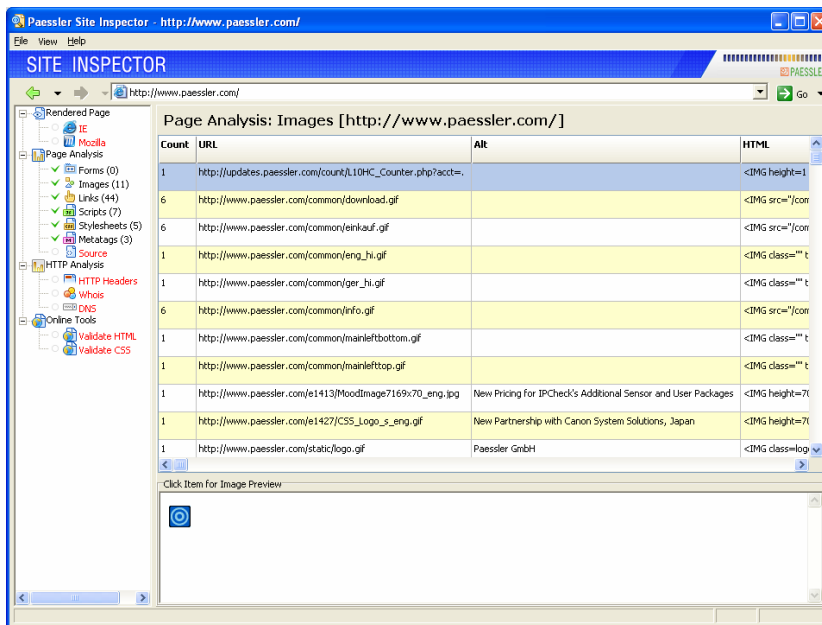
Show All Forms

This function opens a new window of the Analyzing Browser with information regarding the forms that are available in the open webpage. These are respective to the information found between the `<form>` HTML tags.



Show All Images

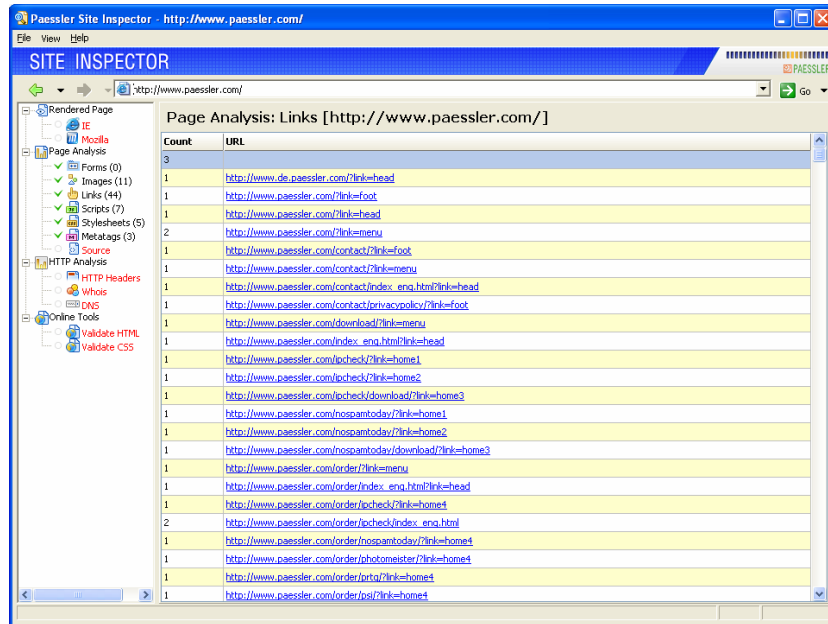
This function opens a new window of the Analyzing Browser with a listing of all images encountered on the active webpage, including other pertinent information. Detailed information about the image is shown next to the image links. The actual image is shown at the bottom of the page, after having been selected from the list.



Note: Image information shown has to be within tags. Images in <STYLE> elements, for example, will not be shown when using this function.

Show All Links

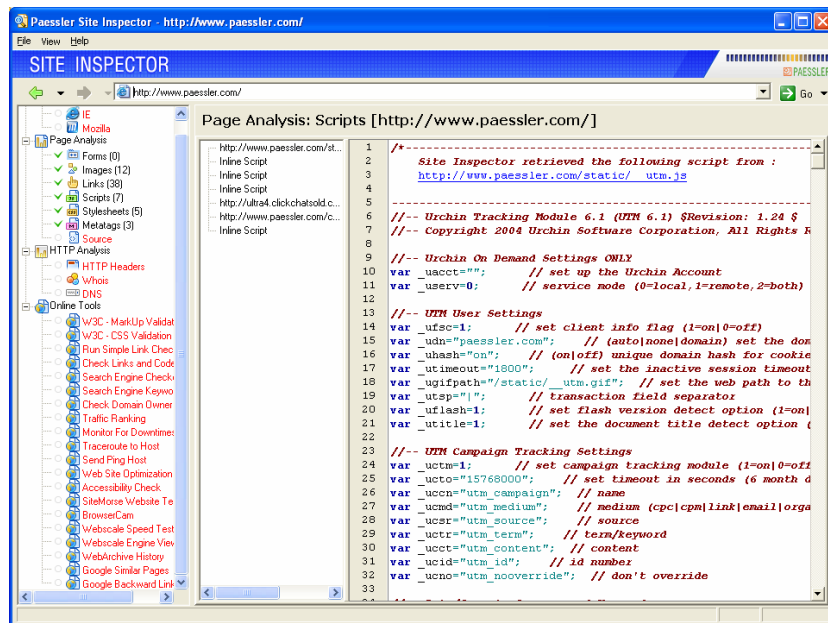
This function opens a new window of the Analyzing Browser with a listing of all hyperlinks <A> (anchor elements) encountered on the active webpage.



Show All Scripts

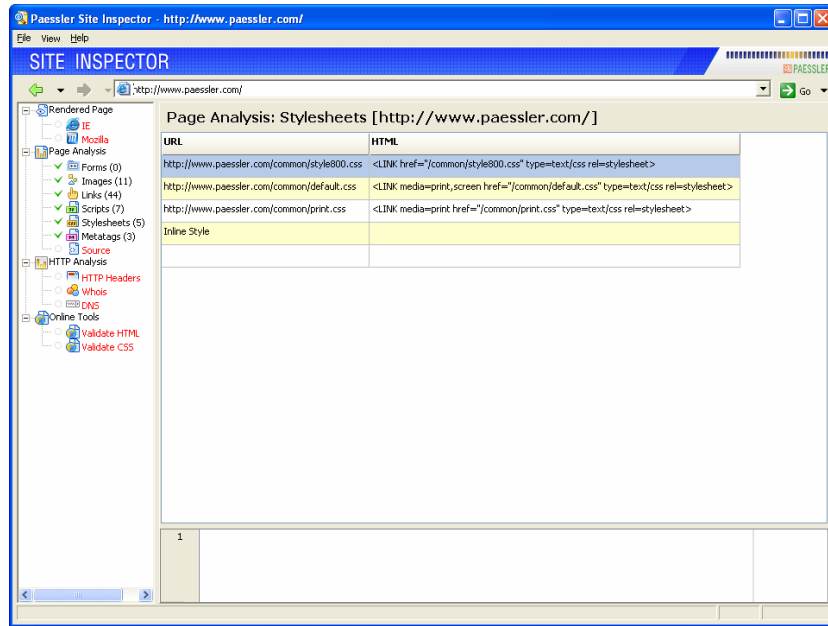
This function opens a new window of the Analyzing Browser with a listing of scripts encountered on the active webpage. In the center bar it will show a selectable list of the scripts being analyzed and, in the right, the script itself. This feature is especially interesting when the analyzed page contains more than one script block or includes several external scripts, because they are all displayed on one page.

Pressing CTRL + F will open the find function.



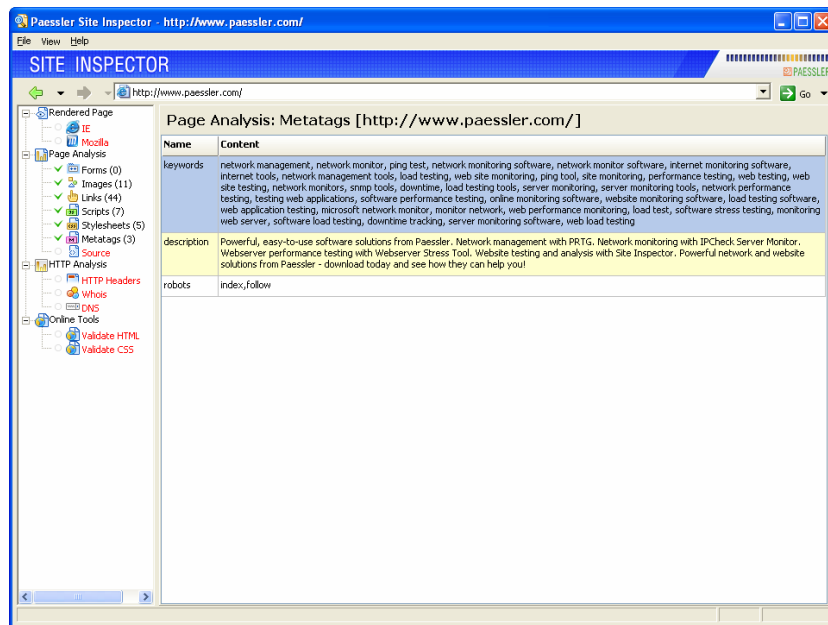
Show All Stylesheets

This function opens a new window of the Analyzing Browser with a listing of the stylesheets encountered on the active webpage.



Show All Metatags

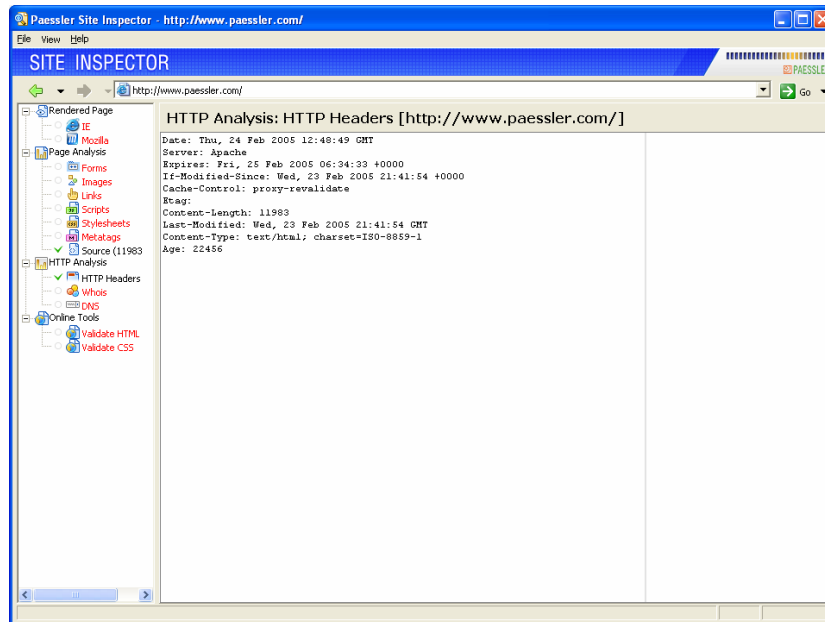
This function opens a new window of the Analyzing Browser with a listing of the metatags encountered on the active webpage.



Show HTTP Header

This function opens a new window of the Analyzing Browser with information about a webpage that is sent to your browser when you request it. This header information helps your browser understand what type of resource you have requested (the mimetype of the information sent by the server, i.e., script, webpage, image, movie, etc.) and how to display it. In most cases you can also get information about the file

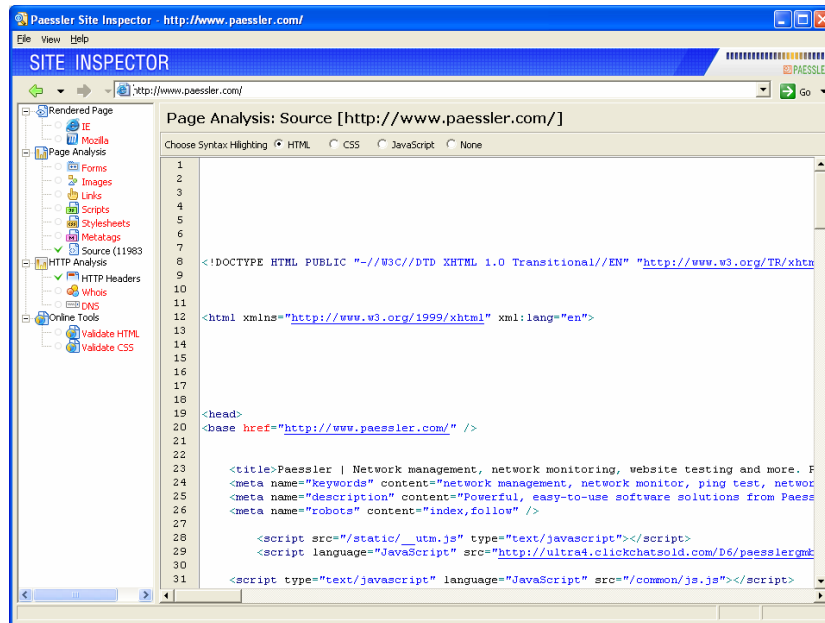
size of the request as it is disclosed in an optional content-length property and the status code of the web request (e.g. 200 for OK, or 404 for a "not found").



Show Source

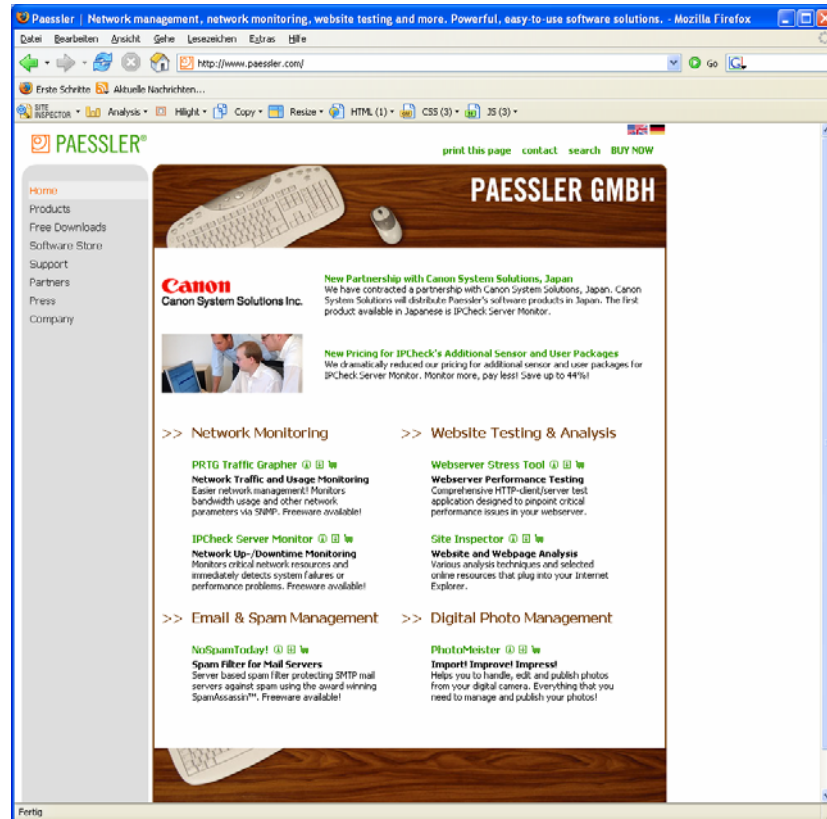
This function opens a new window of the Analyzing Browser displaying the source code of the page. The source is interpreted into a Tree Structure by the Analyzing Browser. The source is called from within the page's root and, as such, the actual source of the page (not the parsed source) will be shown.

Pressing CTRL + F will open the find function.



View Page in Firefox Mozilla

This function will launch the page to be viewed in Firefox Mozilla.



Note: This function only works if Firefox Mozilla is installed on the system!

Respectively, this function, when viewed in Mozilla, is called **View Page in Internet Explorer** and works analogous to the Firefox function.

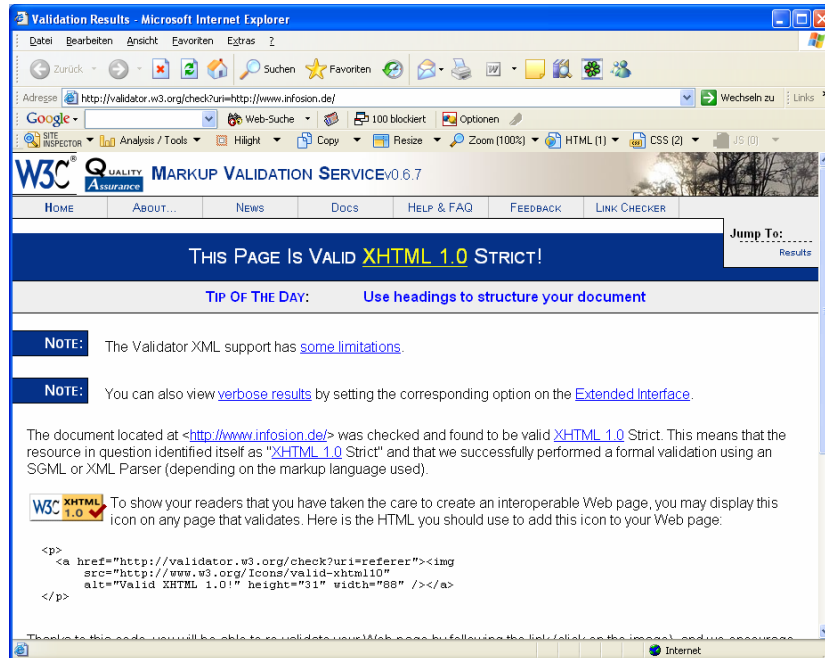
Complete Page Analysis

This option opens the **Analyzing Browser**. For more information see the **Analyzing Browser** chapter in this manual.

W3C – Markup Validation

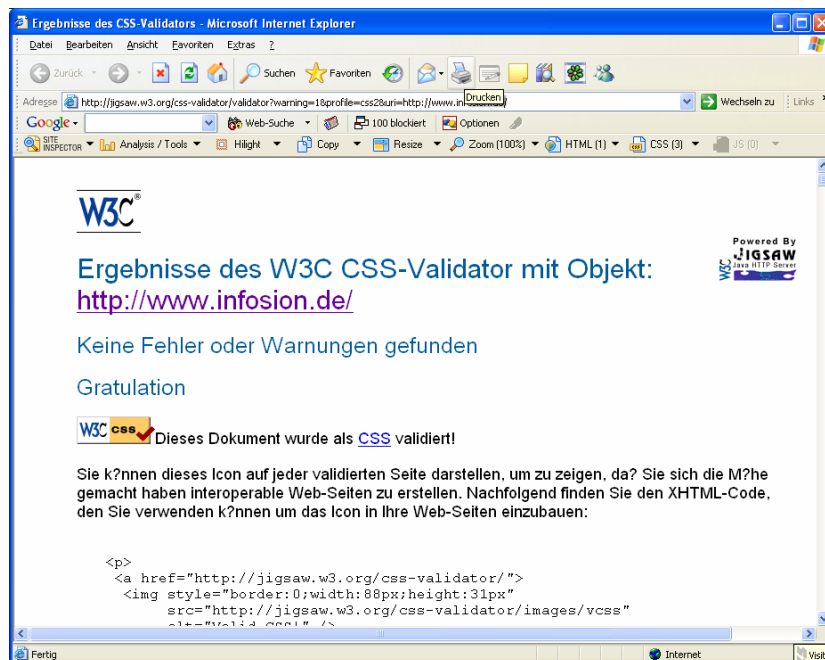
The W3C (www.w3c.org) is an international standards organization in charge of markup languages (such as HyperText Markup Language, HTML, and eXtensible Markup Language, XML).

The **W3C Markup Validation** tool will check the markup language of the webpage for validation against the current standards.



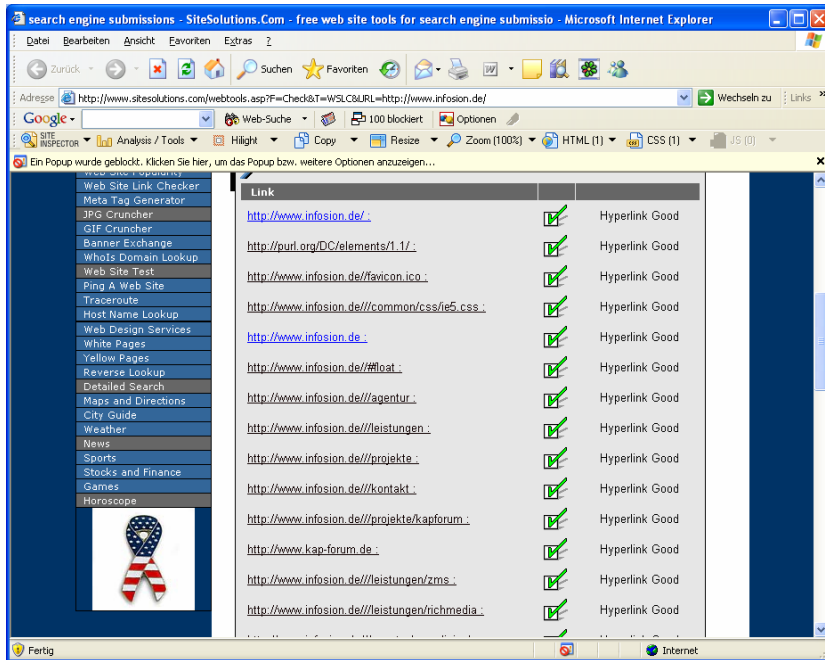
W3C – CSS Validation

The W3C CSS Validation tool will send the URL of the CSS file (whether **inline** or **external**) to the W3C for validation.



Run Simple Link Checker

The **Run Simple Link Checker** tool will open a new window and execute a simple check on the hyperlinks of the current webpage (testing functionality). The result will show whether links are functional or not.



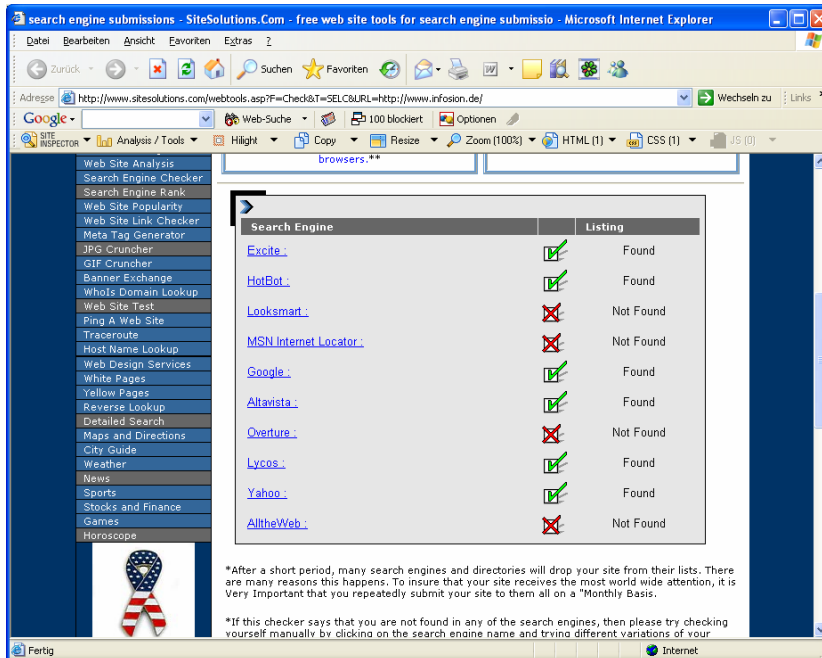
Check Links and Code

The **Check Links and Code** tool will open a new window and execute a test on link functionality, HTML code, load times, and similar.



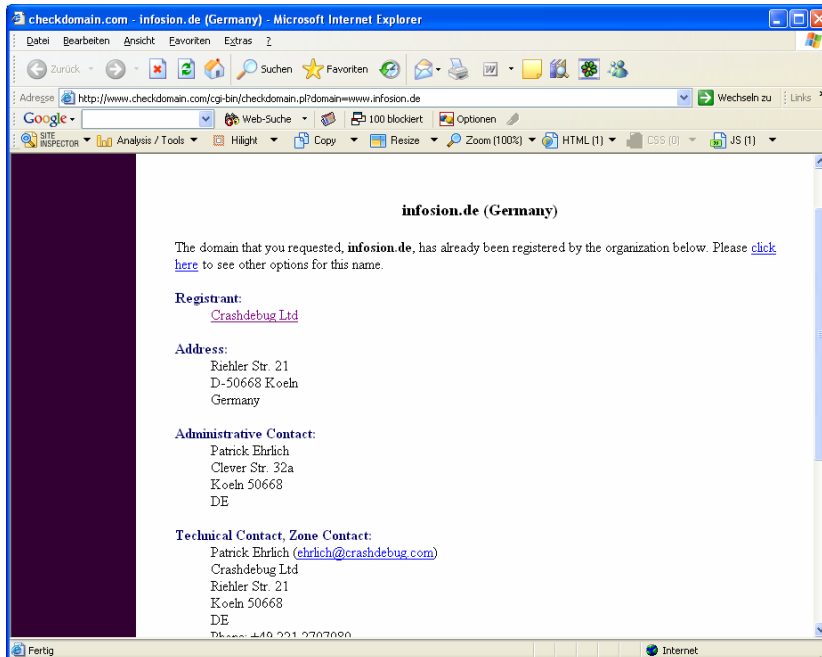
Search Engine Checker

The **Search Engine Checker** checks various common search engines for the availability of information on the current webpage.



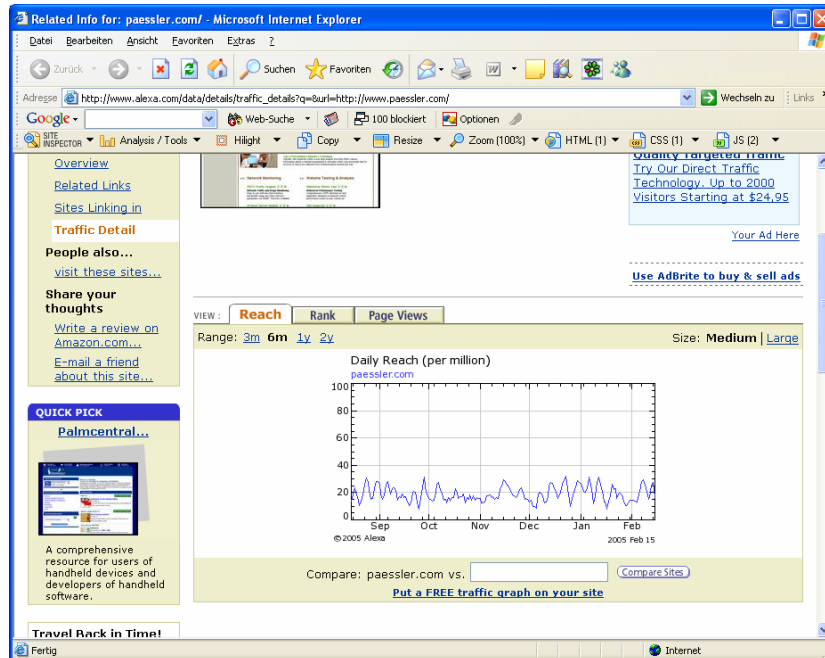
Check Domain Owner

The **Check Domain Owner** tool will open a new window sending a WHOIS query at Sane Solutions, LLC to report the owner of the domain at which the page you are browsing is located.



Traffic Ranking

The **Traffic Ranking** tool opens a new window providing a detailed analysis from Alexa (www.alexa.com) on the current traffic ranking of the webpage that you are viewing.



Note about the online tools: These tools are only valid for the URLs that are available over the world wide web.

More Online Tools

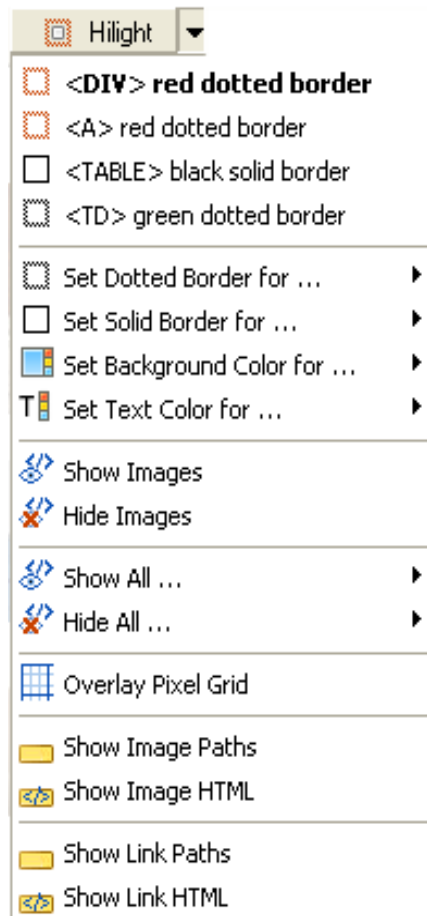
Furthermore, PSI offers various other online tools, such as,

- **Monitor for Downtimes**
- **Traceroute to Host**
- **Send Ping Host**
- **Web Site Optimization**
- **Accessibility Check**
- **SiteMorse Website Test**
- **BrowserCam**
- **Webscale Speed Test**
- **BrowserCam**
- **Webscale Engine Viewer**
- **WebArchive History**
- **Google Similar Pages**
- **Google Backward Links**
- **and many more**

as well as the ability to generate your own online tools (see the setup section earlier in this manual). Please note that these tools are subject to changes, e.g. by their respective providers on the Web.

Hilight

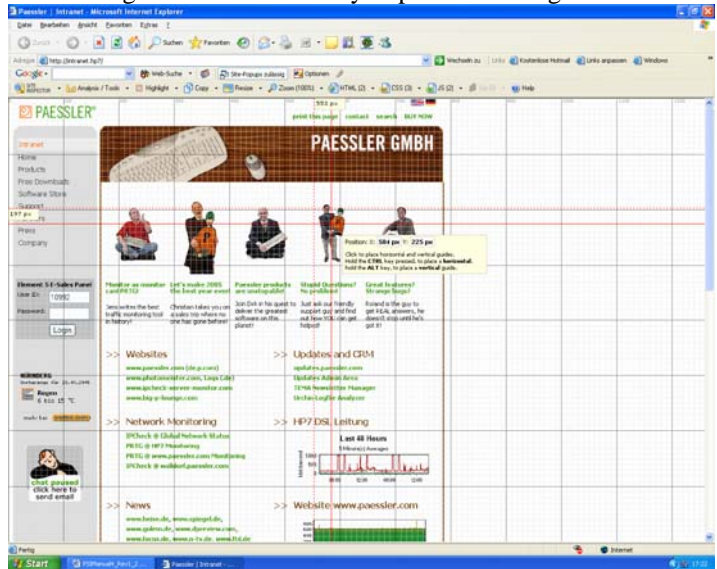
This function allows you to highlight specific sections or elements of a web page. Basically, it draws a border around the selected element (or changes its colors) for easy recognition.



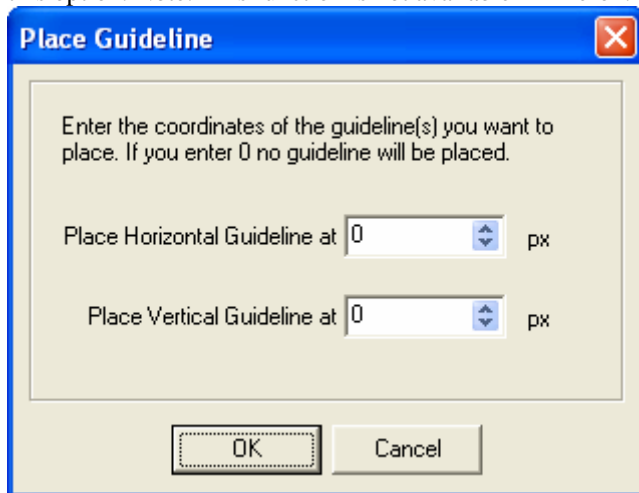
The main options are:

- **<DIV> red dotted border** - this adds a dotted, red outline around a division (DIV) tag.
- **<A> red dotted border** - this adds a dotted, red outline around an anchor (<A>) tag.
- **<TABLE> black solid border** - this adds a solid, black outline around a TABLE tag
- **<TD> green dotted border** - this draws a dotted, green outline around a table cell (TD) tag.
- **Set Dotted Border for ...** - sets a dotted border in the selected color for the selected element. Note: This function is not currently available in Firefox.
- **Set Solid Border for ...** - sets a solid border in the selected color for the selected element. Note: This function is not currently available in Firefox.

- **Set Background Color for ...** - sets a solid background color in the selected color for the selected element. Note: This function is not currently available in Firefox.
- **Set Text Color for ...** - sets a selected color for the selected text element. Note: This function is not available in Firefox.
- **Show Images** – shows the images of the current webpage.
- **Hide Images** – hides the images of the current webpage.
- **Show All ...** - shows the selected elements.
- **Hide All ...** - hides the selected elements.
- **Overlay Pixel Grid** – generates a pixel grid that is placed over the viewed page, allowing to discern the measurement of pixels used for the specific page. You can place guidelines by using the included function. Click in order to place guides. Hold the CTRL key to place horizontal guides or the ALT key to place vertical guides.



- **Place Guideline at...** - this will add a guideline on the specified points of the axis defined in the fields that become available when choosing this option. Note: This function is not available in Firefox.



- **Show Image Paths** – highlights the image paths and presents labels for the images extant on the viewed page.

src=http://www.paessler.com/e1427/CSS_Logo_s_eng.gif



New Partnership with Canon System Solutions, Japan
We have contracted a partnership with Canon System Solutions, Japan. Canon System Solutions will distribute Paessler's software products in Japan. The first product available in Japanese is IPCheck Server Monitor.

src=http://www.paessler.com/e1045/MoodImage1_169x70_eng.jpg



Experience Webserver Stress Tool 7
With the version 7 incarnation of Webserver Stress Tool a big step forward in http load generation was achieved. Now up to 10,000 users can be simulated by using just one test client system!

src=http://www.paessler.com/e1044/MoodImageHappiness_169x70_eng.jpg



New Case Studies Online
We added a new section with case studies and references. Read more about customers improving their business with software solutions made by Paessler!

- **Show Image HTML** – highlights the image HTML code and presents labels for the images extant on the viewed page.

```
<IMG height=70 alt="New Partnership with Canon System Solutions, Japan" src="http://www.paessler.com/e1427/CSS_Logo_s_eng.gif" width=169 border=0>
```



New Partnership with Canon System Solutions, Japan
We have contracted a partnership with Canon System Solutions, Japan. Canon System Solutions will distribute Paessler's software products in Japan. The first product available in Japanese is IPCheck Server Monitor.

```
<IMG height=70 alt="Experience Webserver Stress Tool 7" src="http://www.paessler.com/e1045/MoodImage1_169x70_eng.jpg" width=169 border=0>
```



Experience Webserver Stress Tool 7
With the version 7 incarnation of Webserver Stress Tool a big step forward in http load generation was achieved. Now up to 10,000 users can be simulated by using just one test client system!

```
<IMG height=70 alt="New Case Studies Online" src="http://www.paessler.com/e1044/MoodImageHappiness_169x70_eng.jpg" width=169 border=0>
```



New Case Studies Online
We added a new section with case studies and references. Read more about customers improving their business with software solutions made by Paessler!

- **Show Link Paths** – highlights the link paths and presents labels for the links extant on the viewed page.

href=

href=http://www.paessler.com/press/e1438/



href=http://www.paessler.com/press/e1438/**New Partnership with Canon System Solutions, Japan**
We have contracted a partnership with Canon System Solutions, Japan. Canon System Solutions will distribute Paessler's software products in Japan. The first product available in Japanese is IPCheck Server Monitor.

href=

href=http://www.paessler.com/webstress



href=http://www.paessler.com/webstress**Experience Webserver Stress Tool 7**
With the version 7 incarnation of Webserver Stress Tool a big step forward in http load generation was achieved. Now up to 10,000 users can be simulated by using just one test client system!

href=

href=http://www.paessler.com/contact/casestudies



href=http://www.paessler.com/contact/casestudies**New Case Studies Online**
We added a new section with case studies and references. Read more about customers improving their business with software solutions made by Paessler!

href=

- **Show Link HTML** – highlights the links HTML code and presents labels for the links extant on the viewed page.

``
``



Canon
Canon System Solutions Inc.

`New Partnership with Canon System Solutions, Japan ` `New Partnership with Canon System Solutions, Japan`
 We have contracted a partnership with Canon System Solutions, Japan. Canon System Solutions will distribute Paessler's software products in Japan. The first product available in Japanese is IPCheck Server Monitor.

``
``



`Experience Webserver Stress Tool 7 ` `Experience Webserver Stress Tool 7`
Experience Webserver Stress Tool 7
 With the version 7 incarnation of Webserver Stress Tool a big step forward in http load generation was achieved. Now up to 10.000 users can be simulated by using just one test client system!

``
``

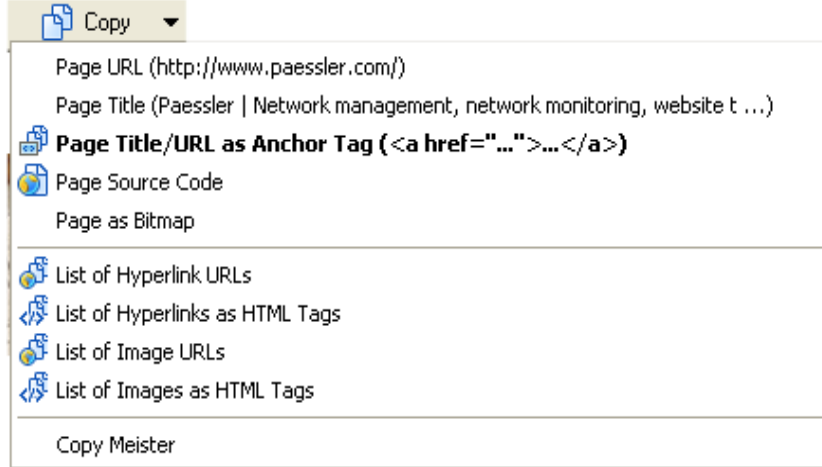


`New Case Studies Online ` `New Case Studies Online`
New Case Studies Online
 We added a new section with case studies and references. Read more about customers improving their business with software solutions made by Paessler!

``

Copy

This function allows you to copy selected information directly from the webpage.



The screenshot shows a 'Copy' dropdown menu with the following options:

- Page URL (http://www.paessler.com/)
- Page Title (Paessler | Network management, network monitoring, website t ...)
- Page Title/URL as Anchor Tag (...)**
- Page Source Code
- Page as Bitmap
- List of Hyperlink URLs
- List of Hyperlinks as HTML Tags
- List of Image URLs
- List of Images as HTML Tags

Copy Meister

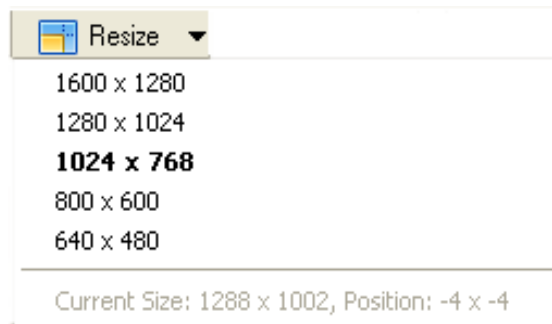
The main options are:

- **Page URL** – this copies the page URL to the clipboard. This is the same information as is found in the address bar of your browser.
- **Page Title** – this copies the page's TITLE information to the clipboard. This is the information stored under the TITLE tag of the current webpage.
- **Page Title/URL as Anchor Tag** – this copies the page's URL and TITLE information within an ` ` tag to the clipboard. This can be useful if you want to paste this information in a webpage.

- **Page Source Code** – this copies the page's entire source code to the clipboard. This can be useful if you want to paste the entire source code of the page into another webpage.
- **Page as Bitmap** – this copies a page as a bitmap to the clipboard. This bitmap can then be pasted in an image processing software. Note: This function is not currently available in Firefox.
- **List of Hyperlink URLs** – this copies a list of all hyperlinks encountered in the current webpage into the clipboard. This can be useful for integrating these hyperlinks into another webpage.
- **List of Hyperlinks as HTML Tags** – this copies all hyperlinks encountered on the active page as HTML tags.
- **List of Image URLs** – this copies all image URLs encountered on the active page.
- **List of Images as HTML Tags** – this copies all image tags encountered on the active page as HTML tags.
- **Copy Meister** - This launches the **Copy Meister** functionality. For more information on **Copy Meister** please see the **Copy Meister** chapter in this manual. Note: This function is not currently available in Firefox.

Resize

This function allows you to resize the browser window to a specified size. It is very useful for e.g. web developers who want to check if their pages fit on specific resolutions.



The options are:

- **1600 x 1280** - this will resize your browser screen to a resolution of 1600 x 1280 pixels.
- **1280 x 1024** - this will resize your browser screen to a resolution of 1280 x 1024 pixels.
- **1024 x 768** - this will resize your browser screen to a resolution of 1024 x 768 pixels.
- **800 x 600** - this will resize your browser screen to a resolution of 800 x 600 pixels.
- **640 x 480** - this will resize your browser screen to a resolution of 640 x 480 pixels.



Normal size (1024 x 768)

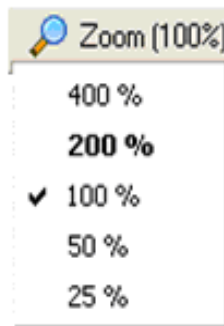


Reduced size (640 x 480)

Note: Depending on your screen resolution and on the manner in which the webpage is coded, you might not be able to see the whole browser, resp. the complete page content. E.g. if your screen resolution is 1024 x 768 and you resize the browser to 1280 x 1024 pixels, certain parts of the browser will disappear beyond the frame of your screen. The same holds true for webpages with a fixed size. If you resize your browser to 640 x 480 but are viewing a page set to be viewed at a resolution of 800 x 600, certain elements of the webpage you are viewing will be hidden beyond the frame of your browser window.

Zoom

This function allows you to zoom in / out of the current webpage.

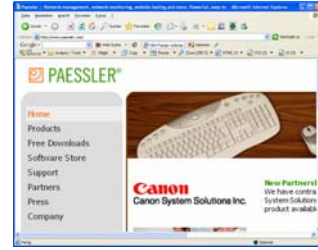


The options are:

- **400%** - this will zoom in on the webpage to show 400% of the original size.
- **200%** - this will zoom in on the webpage to show 200% of the original size.
- **100%** - this will show the entire webpage (default).
- **50%** - this will zoom out of the webpage to show 50% of the original size.
- **25%** - this will zoom out of the webpage to show 25% of the original size.



Normal resolution



At 200% Zoom magnification

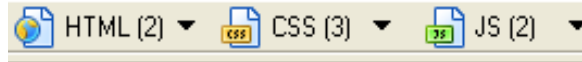
Note: Zooming will not change the size of your browser window. It will merely increase / decrease the size of the information shown on the webpage.

Clicking on the main button individually will toggle the zoom factor between 100% and 200%.

Note: This function is currently not available in Firefox.

Realtime Analysis

Last but not least of the components making up the Toolbar is the Real Time Analysis function.

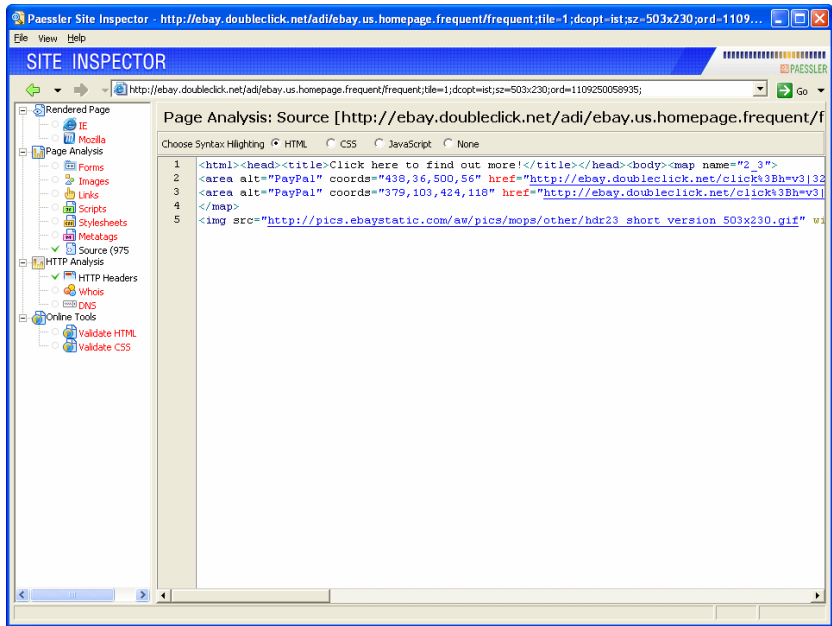


HTML

This function will analyze the current page for the HTML code of entire pages, frames, and internal frames. A click of the button will open a listing of the available frame URLs.

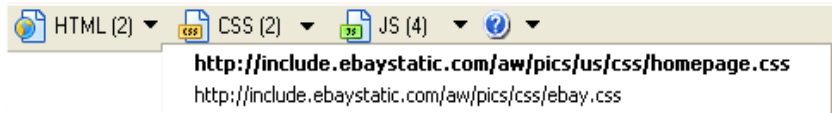


Select the element you want to have analyzed and the source will appear in the Analyzing Browser.

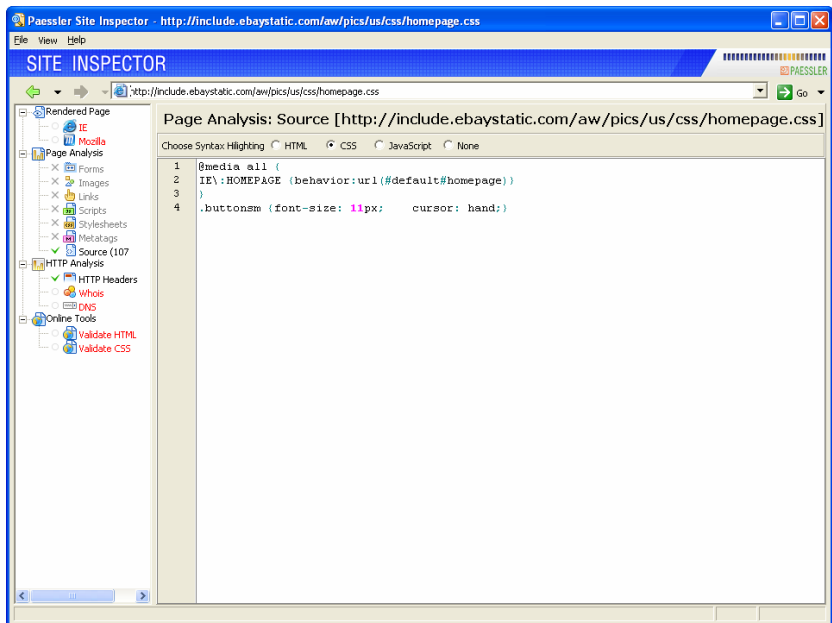


CSS

This function will analyze the current page for the CSS (cascading stylesheets) code of the page. A click of the button will open a listing of the available CSS code sets.

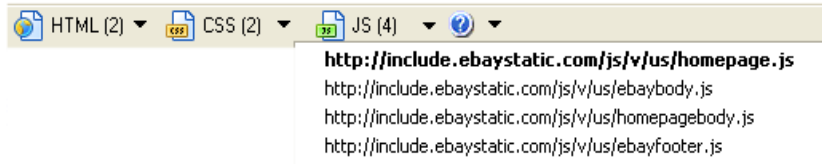


Select the element you want to have analyzed and the source will appear in the Analyzing Browser.

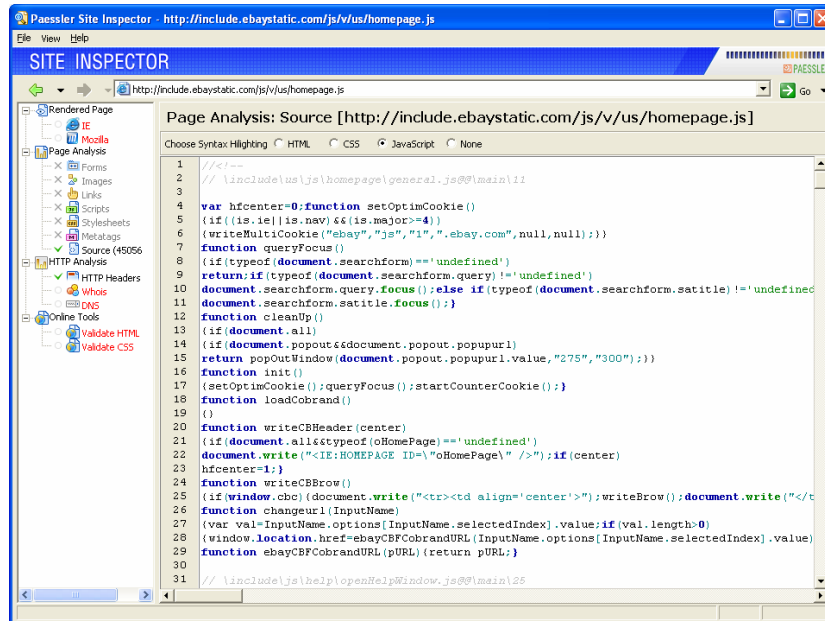


JS

This function will analyze the current page for scripts. A click on the button will open a listing of the available scripts.

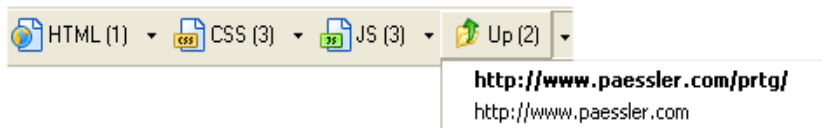


Select the element you want to have analyzed and the source will appear in the Analyzing Browser.



UP

Using this button will move you up one level to the parent folder. This button is only activated if a parent folder exists.



Note: This function is currently not available in Firefox.

Context Menus

By right-clicking anywhere on the main window of Internet Explorer or Firefox, one opens the context menu.

Context Menu for Internet Explorer

Depending on how you have set up your context menu options (please refer to the section **The Toolbar -> Setup** in this manual), various PSI options will be available directly from the context menu.

```
PSI: Copy Meister  
PSI: Open Frame In New Window  
PSI: Open Frame In This Window  
PSI: Show All Forms  
PSI: Show All Images  
PSI: Show All Links  
PSI: Show All Scripts  
PSI: Show All Stylesheets  
PSI: Show HTTP Header  
PSI: Show Source
```

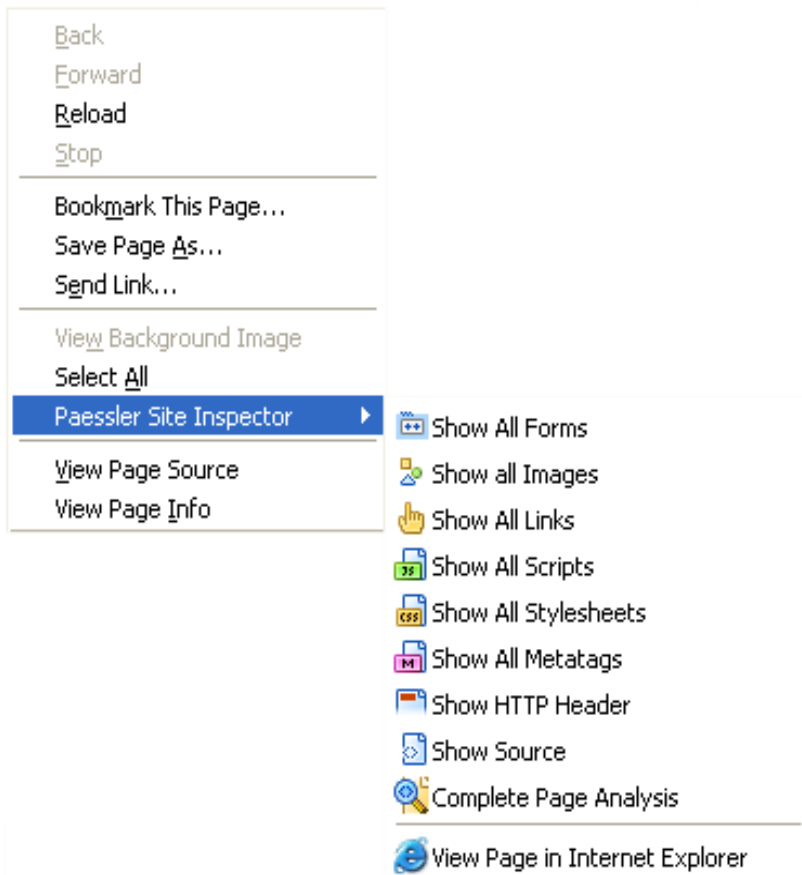
The following options may be available:

- **PSI: Copy Meister** – this launches the Copy Meister function. For more information please refer to the Copy Meister chapter in this manual.
- **PSI: Open Frame in New Window** – when located within a frame, this function launches a new window and opens the selected frame within it.
- **PSI: Open Frame in This Window** – when located within a frame, this function opens the selected frame within the open window.
- **PSI: Show All Forms** – this launches the Analyzing Browser and depicts the forms encountered on the page.
- **PSI: Show All Images** – this launches the Analyzing Browser and depicts the images encountered on the page.
- **PSI: Show All Links** – this launches the Analyzing Browser and depicts the links encountered on the page.
- **PSI: Show All Scripts** – this launches the Analyzing Browser and depicts the scripts encountered on the page.

- **PSI: Show All Stylesheets** – this launches the Analyzing Browser and depicts the stylesheets encountered on the page.
- **PSI: Show HTTP Header** – this launches the Analyzing Browser and displays the HTTP header for the page.
- **PSI: Show Source** – this launches the Analyzing Browser and displays the source code of the page.
- **PSI: Copy Image as HTML Tag** – when the mouse icon is placed over an image, this copies the image link as an HTML tag to the clipboard.
- **PSI: Copy Image URL** – when the mouse icon is placed over an image, this copies the image link as an URL to the clipboard.
- **PSI: Copy Link as HTML Tag** – when the mouse icon is placed over a link, this copies the link as an HTML tag to the clipboard.

Context Menu for Firefox

The context menu in Firefox works a little different than that for Internet Explorer. It is located in the context menu (right click in the browser) under the option “Paessler Site Inspector”. The functionality is analogous to that of the toolbar.



Copy Meister

Site Inspector's Copy Meister functionality provides you with the ability to quickly copy underlying HTML of webpage objects to the Windows clipboard. From there you can paste it into other applications (e.g. a word processor or an HTML editor) by using CTRL-V or selecting the **Paste Option** from the **Edit Menu**.

Using CopyMeister to Copy Webpage Content

Depending on the type of object, you can

- **Copy HTML Source**
- **Copy Text**
- **Copy URL**

All of the Copy Meister functions allow you to select areas of the webpage (by clicking and dragging the mouse) before you select the Site Inspector Copy Meister Option. This allows you to copy more than one element at a time.

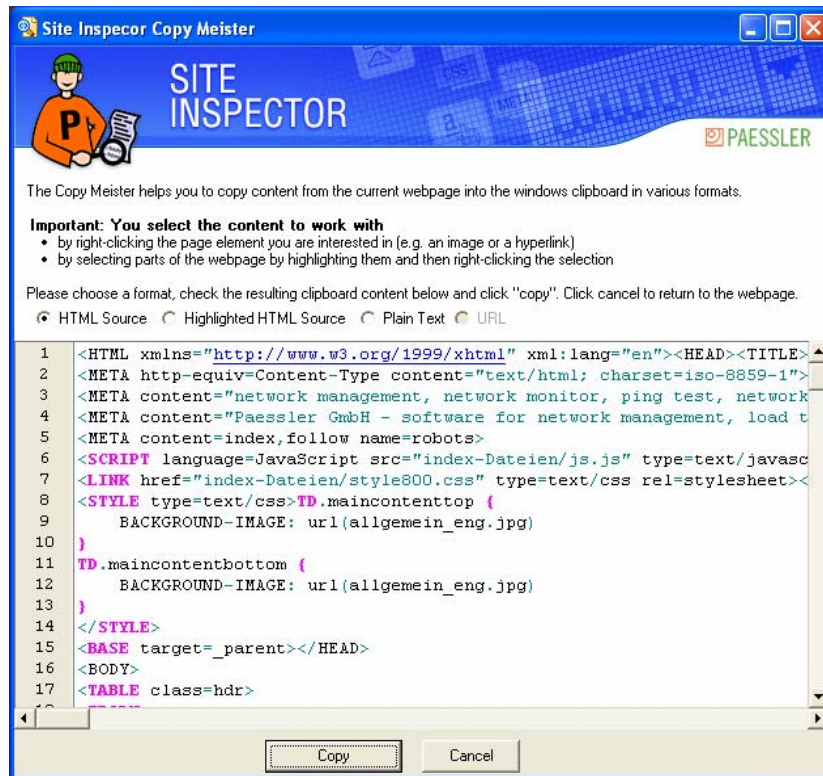
Note: If parts of a webpage are selected and you invoke the context-sensitive menu on another object (e.g. an image), Copy Meister will show you the selected area and not the element you right-clicked.

Copy HTML Source

The **Copy HTML Source** function allows you to capture the exact HTML of the webpage object (as it would appear in the **View Source Option** from the Internet Explorer **View Menu**).

To copy the HTML Source

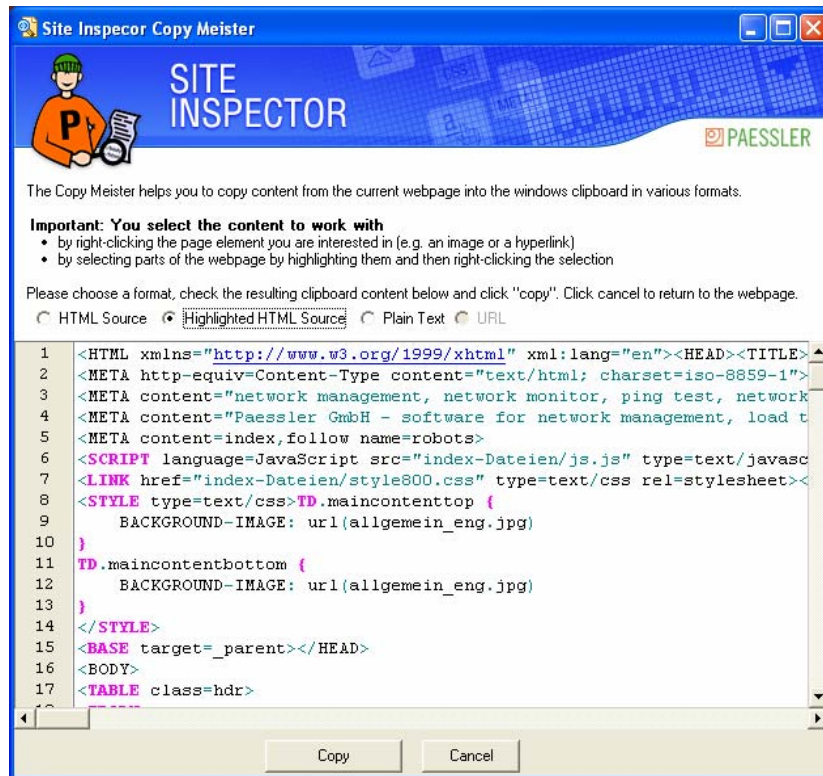
- Select the object that you wish to copy and then select the **Copy Meister** option from the **Copy** functionality of the toolbar (or invoke the context menu by right clicking the desired element and choose the entry "Copy Meister"). This will bring up the **Site Inspector – Copy Meister Window**.



- Select the **copy HTML Source Option**. This will display the appropriate HTML in the main window
- Click the **Copy Button** to copy the HTML source output to your Windows clipboard.

Copy Highlighted HTML Source

The **Copy Highlighted HTML Source** function allows you to capture the exact HTML of the webpage object (as it would appear in the **View Source Option** from the Internet Explorer **View Menu**) including highlighted tags and elements.



To copy the highlighted HTML Source

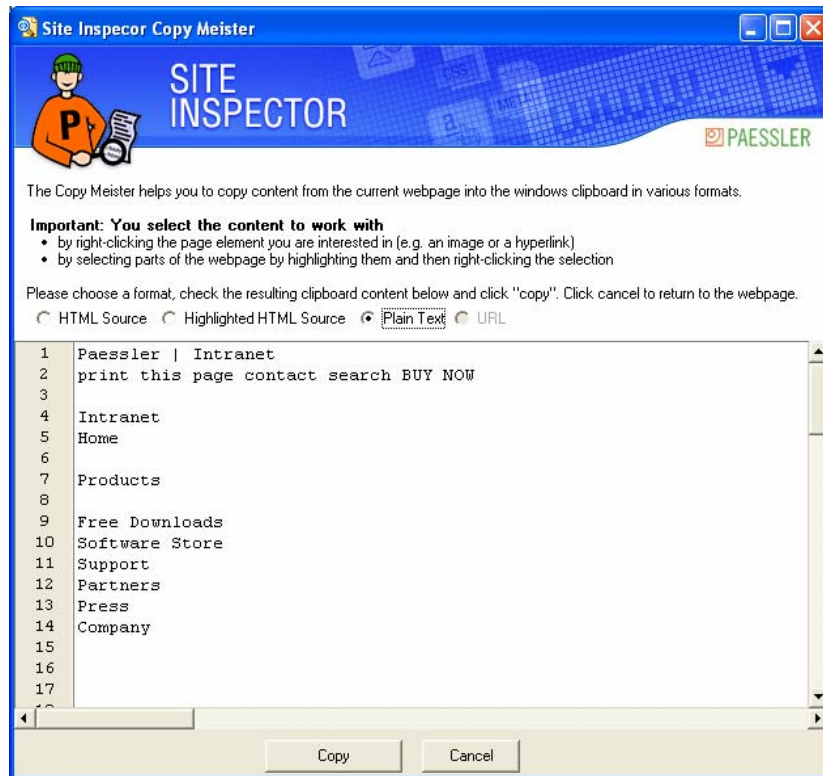
- Select the object that you wish to copy and then select the **Copy Meister** option from the **Copy** functionality of the toolbar (or invoke the context menu by right clicking the desired element and choose the entry "Copy Meister"). This will bring up the **Site Inspector – Copy Meister Window**.

Copy Plain Text

The copy plain text feature allows you to quickly copy webpage text (such as a paragraph or a figure caption).

To copy text

- Select the object that you wish to copy and then select the **Copy Meister** option from the **Copy** functionality of the toolbar (or invoke the context menu by right clicking the desired element and choose the entry "Copy Meister"). This will bring up the **Site Inspector – Copy Meister Window**.



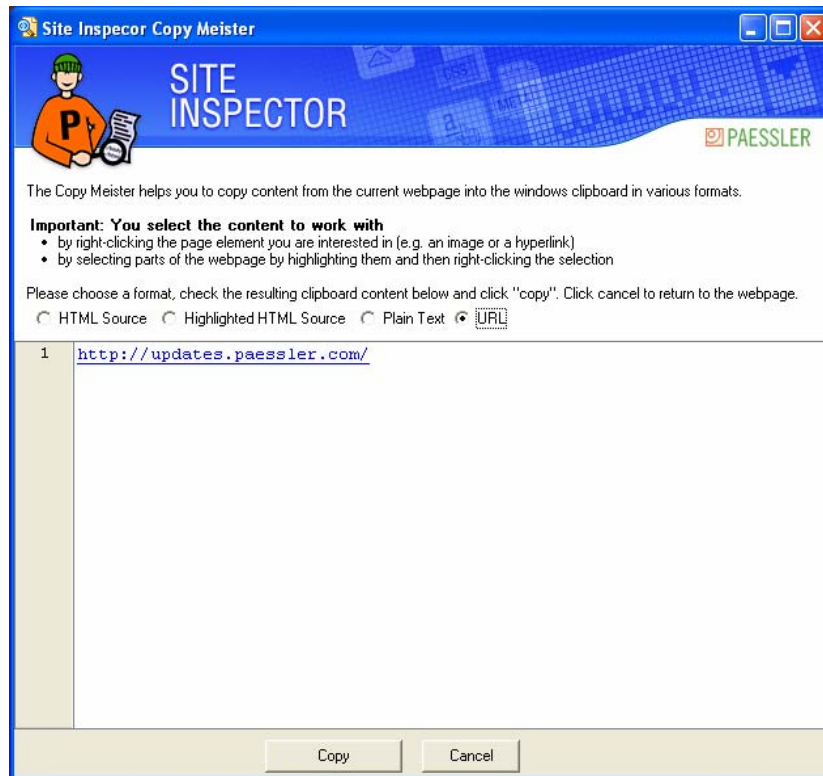
- Select the **copy Text Option**. This will display the appropriate text in the main window.
- Click the **Copy Button** to copy the text output to your Windows clipboard.

Copy URL

The Site Inspector Copy Meister function makes it easy to copy links to images and resources in a website.

To copy an URL

- Select the image or link that you wish to copy and then select the **Copy Meister** option from the **Copy** functionality of the toolbar (or invoke the context menu by right clicking the desired element and choose the entry "Copy Meister"). This will bring up the **Site Inspector – Copy Meister Window**.



- Select the **URL option**. This will display the appropriate URL information in the main window.
- Click the **Copy Button** to copy the URL output to your Windows clipboard.

Troubleshooting

The World Wide Web is a very diverse and ever changing mixture of technologies and tricks. Although Site Inspector was tested thoroughly by the developers and a wide range of beta testers there still can be cases of malfunction.

If you experience any problems, please send the URL of the web page you are analyzing and a short problem description using our support ticket system located under <http://www.paessler.com/support/openticket>.

Also, make sure to have a look at Site Inspector's support and troubleshooting webpages at <http://www.paessler.com/psi/faqs>.

Site Inspector Common Solutions

There are times when Site Inspector may not operate correctly. Below are a few solutions to some common problems.

The toolbar of Site Inspector does not show up

Please right-click on the main Internet Explorer toolbar and select to show Site Inspector's toolbar.

The context-sensitive menu does not show up

The context-sensitive menu is what appears when you click on an open browser window with your secondary (right) mouse button. There are some webpages that explicitly disable the context menu. If no context shows up after you click on an open browser window with your secondary mouse button, you can still access Site Inspector functionality on that webpage through the toolbar buttons.

The context menu does not show Site Inspector entries

There are webpage elements (such as Macromedia Flash movies and Java Applets) that have their own context-sensitive menus—when you click on them with your secondary (right) mouse button, a different menu appears than when you click on another part of the webpage. To access Site Inspector functionality in this case, simply click on another part of the webpage or use the Site Inspector toolbar buttons.

Legal Information

Copyright

Paessler Site Inspector - Copyright © 2004-2006 Paessler AG

Paessler AG
Hornschurchpromenade 7
D-90762 Fürth
Germany

Company Homepage: <http://www.paessler.com>

Disclaimer of Warranty

SITE INSPECTOR AND THE ACCOMPANYING FILES ARE SOLD "AS IS". PAESSLER MAKES AND CUSTOMER RECEIVES FROM PAESSLER NO EXPRESS OR IMPLIED WARRANTIES OF ANY KIND WITH RESPECT TO THE SOFTWARE PRODUCT, DOCUMENTATION, MAINTENANCE SERVICES, THIRD PARTY SOFTWARE OR OTHER SERVICES. PAESSLER SPECIFICALLY DISCLAIMS AND EXCLUDES ANY AND ALL IMPLIED WARRANTIES OF MERCHANTABILITY, FITNESS FOR A PARTICULAR PURPOSE, AND NON-INFRINGEMENT. DUE TO THE VARIETY OF USER EXPERTISE, HARDWARE AND SOFTWARE ENVIRONMENTS INTO WHICH SITE INSPECTOR MAY BE SUBJECTED, THE USER ASSUMES ALL RISK OF USING SITE INSPECTOR. THE MAXIMUM LIABILITY OF PAESSLER WILL BE LIMITED EXCLUSIVELY TO THE PURCHASE PRICE.

Index

A

Analysis 30
Analyzing Browser 17

B

Basic concepts 3

C

Context Menus 50
Copy 44
Copy Highlighted HTML Source 53
Copy HTML Source 52
Copy Meister 52
Copy Plain Text 54
Copy URL 55
Copyright 57

D

Disclaimer of Warranty 58
DNS 24

F

Features 5
Forms 18

H

Hilight 41
How Site Inspector is organized 14
HTTP Headers 22

I

IE / Mozilla 18
Images 19
Installation 9

Installing Updates 13
Introduction 2

L

Legal Information 57
Links 19

M

Metatags 21

R

Realtime Analysis 47
Removing Site Inspector from Firefox 13
Removing Site Inspector from your System 13
Requirements 9
Resize 45
Running Setup and Configuration 9

S

Scripts 20
Setup 27
Site Inspector Common Solutions 57
Source 22
Stylesheets 21

T

Toolbars 26
Troubleshooting 56

U

Using CopyMeister to Copy Webpage Content 52

W

W3C - CSS Validation 25
W3C - Markup Validation 24
Welcome to Site Inspector 1
Whois 23

Z

Zoom 46