

Guide to Customizing and Distributing Netscape 7.0

28 August 2002

Copyright © 2002 Netscape Communications Corporation. All rights reserved.

Netscape and the Netscape N logo are registered trademarks of Netscape Communications Corporation in the U.S. and other countries. Other Netscape logos, product names, and service names are also trademarks of Netscape Communications Corporation, which may be registered in other countries.

The product described in this document is distributed under licenses restricting its use, copying, distribution, and decompilation. No part of the product or this document may be reproduced in any form by any means without prior written authorization of Netscape and its licensors, if any.

THIS DOCUMENTATION IS PROVIDED "AS IS" AND ALL EXPRESS OR IMPLIED CONDITIONS, REPRESENTATIONS AND WARRANTIES, INCLUDING ANY IMPLIED WARRANTY OF MERCHANTABILITY, FITNESS FOR A PARTICULAR PURPOSE OR NON-INFRINGEMENT, ARE DISCLAIMED, EXCEPT TO THE EXTENT THAT SUCH DISCLAIMERS ARE HELD TO BE LEGALLY INVALID.

Contents

Preface	9
Who Should Read This Guide	10
About the CCK Tool	10
If You've Used a Previous Version of CCK	11
Using Existing Customized Files	12
How to Use This Guide	13
Where to Go for Related Information	15
Chapter 1 Getting Started	17
Why Customize and Distribute Netscape?	18
Why Do Users Prefer Netscape 7.0?	18
Overview of the Customization and Distribution Process	20
System Requirements	23
Platform Support	25
Installing the Client Customization Kit Tool	26
What Customizations Can I Make?	27
Netscape Navigator Customizations	27
Mail and News Customizations	32
CD Autorun Screen Customizations	32
Installer Customizations	33
Customization Services Options	34
Which Customizations Can I Make Quickly?	34
Using the CCK Tool	35
Working with CCK Configurations	35
Saving Changes	36
Reviewing and Verifying Your Customizations	36
Getting Help	37
Chapter 2 Customizing Netscape in Ten Minutes	39
What You'll Customize	39

Quick Customization Instructions	40
Verifying Your Customizations	53
Chapter 3 Using the Configuration Workspace for Customized Files	55
Creating a New Installer Configuration	56
The Configuration Directory	56
Customized Files Checklist	58
Platform and Configuration Information	59
Chapter 4 Preparing Operating System, Language, and Installer Information	61
Specifying an Operating System	61
Windows	61
Linux	62
Macintosh	62
Deciding What Kinds of Installers to Create	63
Providing a CD-Based Installer	63
User Experience of CD-Based Installation	64
Providing a Network-Downloadable Installer	64
User Experience of Network-Downloadable Installer (Windows)	65
Choosing a Company Identifier	66
Checklist for Platform and Installer Screens	66
Chapter 5 Preparing to Customize the Netscape Browser	67
Creating a Custom Animated Logo	67
Step 1: Create the Animation Frames	68
Step 2: Assemble Your Frames Using a GIF Animation Program	69
Determining a Help URL and Menu Item	69
Determining the Name of the Program Folder in the Windows Start Menu	70
Preparing a Customized Read-me File	71
Creating Your Own Sidebar Tab	71
Specifying the Default Home Page	73
Determining Text for the Browser Window's Title Bar	73
Checklists for Customizing the Browser	73
Customize the Browser - Part One	73
Customize the Browser - Part Two	74
Customize the Browser - Part Three	74
Chapter 6 Preparing to Customize Netscape Mail and News	75
Specifying Mail Domain and Server Settings	75
Domain Settings	76
Incoming Server Settings	76
Outgoing Server Setting	77

Specifying News Domain and Server Settings	77
Domain	77
News Server (NNTP)	78
Netscape Activation Considerations for Mail and News	78
Checklists for Customizing Mail and News	79
Customize Netscape Mail	79
Customize Netscape News	79
Chapter 7 Preparing to Customize Proxy Configurations	81
About Proxy Configurations	81
Default Network Proxy Configurations	82
Chapter 8 Preparing to Customize the CD Autorun Screen	83
What Is the CD Autorun Screen?	83
About the Default CD Autorun Screen	84
Customizing the Standard CD Autorun Screen	84
Customizing the CD Autorun Screen's Background Image	86
Editing the Standard Background Image	86
Creating Your Own Custom Background Image	87
Customizing Text for the CD Autorun Screen	88
Customizing the Installation Document	88
Checklist for Customize the CD Autorun Screen	89
Chapter 9 Preparing to Create the Installer	91
Selecting Netscape Components	92
Providing Additional Installers	93
Chapter 10 Verifying Your CCK Tool Customizations	95
Installing Your Customized Build	96
Verifying Your Browser Customizations	96
Verifying Your Mail and News Customizations	97
Verifying Your Installer Customizations	98
Chapter 11 Manually Customizing the CD Autorun Screen	101
Why Manually Customize the Standard CD Autorun Screen?	102
Run The CCK Tool First	102
About the CD Autorun Files	103
Tools for Customizing the Standard Autorun Screen	103
Creating a CD Staging Area on Your Hard Disk	104
Understanding the rshell.ini File	104
General Settings in the rshell.ini File	105

Text for Browse, Back, and Exit Buttons	105
Positions of Browse, Back, and Exit Buttons	105
Bitmaps for the Browse, Back, and Exit Buttons	106
Dialog Settings	106
Caption Text	106
Dialog Position	107
Background Bitmap	107
Button Gap	107
Global Text Settings	107
Dialog Title Text	107
Dialog Title Position	107
Dialog Title Text Color	108
Dialog Title Text Font	109
Dialog Title Text Style	109
Global Button Text Settings	109
Text Colors	109
Button Title and Body Text	109
Button Title Font	110
Button Body Text Style	110
Column Settings Within a Dialog	110
Position of First Button in Column One	110
Position of a Button's Descriptive Text	110
Column Text Width	111
Button Settings Within a Dialog	111
Button Bitmaps	111
Button Offset	113
Editing the rshell.ini File	113
Adding a New Screen	114
Adding a Background Image to a Dialog Screen	115
Customizing a Screen's Title Bar Text	117
Adding a New Button to a Screen	118
Verifying Your CD Autorun Screen Manual Customizations	119
Chapter 12 Advanced Netscape Customizations	121
Understanding How Manual Customization Works	121
Understanding the Preferences Architecture	123
Important Legal Restrictions	124
Before You Start	125
Editing a Configuration File with a Text Editor	125
Instructions for Common Manual Customizations	126
Disabling Netscape Activation/Registration	126
Customizing the Welcome Page	128

Chapter 13 Preparing Macintosh Installers and Program Files	129
Tools Required	129
Creating a Customized Macintosh Installer	130
Create a Customized Mac OS 9 Installer	131
Creating a Mac OS X Installer	133
Chapter 14 Distributing Your Installers	135
Distributing a CD-Based Installer	135
Verifying Your CD Layout (No Autorun Screen)	136
Windows CD Layout	136
Macintosh CD Layout	136
Linux CD Layout	137
Assembling Your CD Layout (Autorun Screen)	137
Preparing Your CD-Ready Files for CD Distribution	139
Distributing Network-Downloadable Installers or Binaries	141
End-User Instructions for Windows	142
End-User Instructions for Macintosh	142
End-User Instructions for Linux	142
Appendix A Resources for ISPs	145
Business Planning	145
Setting Up Your Servers and Internet Feed	146
Preparing Your Account Setup Solution	147
Troubleshooting and Customer Support	147
Appendix B Manual Account Setup	149
Preliminaries	149
Set Up the Dialer	150
Create a Modem Location	151
Set Up TCP/IP	152
Log On and Start Netscape	154
Appendix C Netscape Profile Locations by Platform	157

Preface

This guide describes how to customize and distribute Netscape 7.0. It includes information on how to

- Find information on setting up and running an ISP.
- Use the Netscape Client Customization Kit (CCK) tool to create customized Netscape 7.0 installers for Windows, Linux, and Macintosh.
- Make additional customizations by manipulating the installation files.
- Prepare the final, customized installation files for delivery on CD-ROM or by network download.
- Provide your users with basic account setup information.

Before using the CCK tool or this guide, be sure to check the latest Netscape 7.0 Client Customization Kit Release Notes and sign up for the Browser Distribution Program. For details on where to find these and other important sources of information, see *Where to Go for Related Information* (page 15).

This preface contains these sections:

Who Should Read This Guide

About the CCK Tool

If You've Used a Previous Version of CCK

How to Use This Guide

Where to Go for Related Information

Who Should Read This Guide

This guide is intended for organizations that need a simple solution for customizing Netscape and distributing it to their end users. If you are an ISP or distributor, for example, you can use the Client Customization Kit (CCK) to create and distribute customized versions of Netscape 7.0.

This guide describes how to use the CCK tool to create a customized Netscape 7.0 installer, prepare it for cross-platform distribution via CDs and/or network installers, and ensure that your customers can easily connect to their Internet accounts using a modem and phone line.

About the CCK Tool

The CCK tool allows you to customize basic Netscape preferences and defaults and add your own branding elements to the Navigator browser, the CD autorun screen, and the Netscape installer. These customizations can help promote your business, simplify account set up for new users, drive traffic to your site, and reduce service and support costs by providing links to online resources.

The CCK Tool creates Netscape installers for Windows 95/98, Windows 2000, Windows NT, and Linux operating systems. You can also produce a Macintosh version by completing additional manual steps (documented in this guide) after you produce a Windows version.

The CCK tool lets you create these customizations in just a few minutes:

- Display your company name in the browser window's title bar, the CD autorun screen, and the Netscape program folder in the Windows Start menu.
- Set the browser's default home page to your own home page.
- Include entries in Bookmarks, Sidebar, and the Personal Toolbar folder.
- Specify Mail and News server settings.
- Create a Netscape installer that installs only the components you want your users to have.

The CCK tool also helps you create these customizations, which require some preparation before you run the tool:

- Browser customizations:
 - Create a custom animated logo

- Add a Help menu item and corresponding URL
- Customize the read-me file
- CD autorun screen customizations:
 - Create custom background image
 - Customize on-screen text
 - Customize the installation document
- Installer customizations
 - Component selection
 - Integration of additional installers

After you have run the tool and tested its customizations, you can perform a wide range of advanced manual customizations by modifying the installation files.

Manual customizations include:

- Advanced customizations for the CD autorun screen
- Advanced Netscape customizations (such as disabling Netscape activation or presetting proxy preferences)

After you have tested your manual customizations, you may need to manipulate the installation files further to create Macintosh installers. In addition, you'll need to prepare to distribute your installers (by means of CDs or network-downloadable installers) and plan for post-distribution support, such as account setup and troubleshooting.

If You've Used a Previous Version of CCK

If you've used a previous version of CCK for Communicator 4.x, the main difference with this version is that instead of using separate tools to customize the browser, you now use just one tool—the CCK tool—to make the most popular browser customizations. If you used Netscape 6.x CCK, the main change with Netscape 7.0 is additional support for Linux.

Using Existing Customized Files

In most cases you can use your existing customized files without having to make any changes to them. Refer to Table 1 for information on using existing customized files with the CCK tool.

Table 1 Using Existing Customized CCK 4.x and 6.x Files

To Use This File	Do This
Netscape.cfg (4.x only)	Not supported in 6.x or 7.0. For information on preferences formerly included in this file, see Chapter 12, "Advanced Netscape Customizations" (page 121).
rshell.ini file (specifies CD autorun screens)	No changes are necessary. For information on incorporating this file into your Netscape installer, see Chapter 11, "Manually Customizing the CD Autorun Screen" (page 101).
Any custom files you've created for the CD autorun screens, such as custom .bmp images (for background images and buttons on the Autorun screens)	No changes necessary. For information on incorporating these files into your Netscape installer, see Chapter 11, "Manually Customizing the CD Autorun Screen" (page 101).
Small and large animation files (.BMP format) for Navigator animated logo	Convert the small and large .BMP files to .GIF format animation files. For information on incorporating these files into your Netscape 7.0 installer, see Chapter 5, "Preparing to Customize the Netscape Browser" (page 67).
bookmark.htm file (4.x) bookmark.html file (6.x)	With CCK 7.0 you no longer customize the bookmarks.html file, but instead enter bookmarks information directly in the CCK Tool.
.NCI files (for offline account setup)	.NCI files are not supported in Netscape 6.x or Netscape 7.0.
readme.txt file	No changes are necessary. For information on incorporating this file into your Netscape 7.0 installer, see Chapter 5, "Preparing to Customize the Netscape Browser" (page 67).
NetHelp files (4.x only)	NetHelp is no longer supported in Netscape 6.x or Netscape 7.0.
Pab.na2 (address book)	No changes are necessary.

Table 1 Using Existing Customized CCK 4.x and 6.x Files

To Use This File	Do This
Setup.bmp (installer splash screen bitmap file -- 4.x only)	This file is no longer supported.

How to Use This Guide

For the latest online version of this guide, which is updated periodically, see the following:

- **HTML version:**
<http://home.netscape.com/eng/mozilla/ns7/CCKDocs/guide.html>
- **PDF version (easiest for printing):**
<http://home.netscape.com/eng/mozilla/ns7/CCKDocs/pdf/>

Start by reading these two chapters:

- **Chapter 1, “Getting Started”** (page 17), describes the system requirements for running the CCK tool and basic information about using it.
- **Chapter 2, “Customizing Netscape in Ten Minutes”** (page 39), describes how to make the simple customizations listed above and create a Windows installer. Even if you want to make some of the other complex customizations described in the rest of this document, this chapter can help you get acquainted with the CCK tool quickly.

If you are making only the simplest customizations described in Chapter 2, you can skip to Chapter 12 or Chapter 13 (see below).

If you need more information about any CCK tool screen or if you wish to use the CCK tool to make additional customizations that require some file preparation, read the following chapters:

- **Chapter 3, “Using the Configuration Workspace for Customized Files”** (page 55), describes the contents of the configuration directory, the files you can customize, and where to store them for easy access when you run the CCK tool.
- **Chapter 4, “Preparing Operating System, Language, and Installer Information”** (page 61), describes how to choose a platform and specify other basic information about your installer.

- Chapter 5, “Preparing to Customize the Netscape Browser” (page 67), describes the information and files you need to prepare for customizing different aspects of Navigator, the Netscape browser.
- Chapter 6, “Preparing to Customize Netscape Mail and News” (page 75), describes the information you need to have on hand if you want customize your default domain and server settings for Netscape Mail and Newsgroups.
- Chapter 8, “Preparing to Customize the CD Autorun Screen” (page 83), describes the information and files you need to prepare in order to customize the CD autorun screen with the CCK tool.
- Chapter 9, “Preparing to Create the Installer” (page 91), describes the Netscape components you can choose to include in your installer and the requirements for additional installers you may wish to create.
- Chapter 10, “Verifying Your CCK Tool Customizations” (page 95), describes how to verify the customizations you have made with the CCK tool.

After you have verified all the customization you have made with the CCK tool, you can make additional manual customizations if you wish:

- Chapter 11, “Manually Customizing the CD Autorun Screen” (page 101), describes the manual customizations you can make, if you wish, to the CD autorun screen by manipulating the installation files generated by the CCK tool.
- Chapter 12, “Advanced Netscape Customizations” (page 121), provides an overview of the preferences architecture and the general procedure for manual customization, as well as detailed, step-by-step instructions for some of the most common manual customizations.

After you have completed and verified all your manual customizations, follow the instructions in these chapters that apply to your situation:

- Chapter 13, “Preparing Macintosh Installers and Program Files” (page 129), describes how to create a Macintosh installer from the Windows installation files you generated with the CCK tool.
- Chapter 14, “Distributing Your Installers” (page 135), describes how to prepare your customized installation files for CD or online distribution.

Two appendixes provide additional practical information for ISPs:

- Appendix A, “Resources for ISPs” (page 145), provides links to information for ISPs

- Appendix B, “Manual Account Setup” (page 149), summarizes the minimum information your customers need to set up their own accounts for your ISP business on Windows.
- Appendix C, “Netscape Profile Locations by Platform” (page 157), summarizes the location of Netscape profile directories on different platforms.

Where to Go for Related Information

Before using the CCK tool or this guide, be sure to check the latest Netscape 7.0 Client Customization Kit Release Notes (<http://home.netscape.com/eng/mozilla/ns7/relnotes/cck.html>) and sign up for the Browser Distribution Program (<http://home.netscape.com/bisdev/distribution/index.html>).

For the latest online version of this guide, which is updated periodically, see the following:

- **HTML version:**
<http://home.netscape.com/eng/mozilla/ns62/CCKDocs/guide.html>
- **PDF version (easiest for printing):**
<http://home.netscape.com/eng/mozilla/ns7/CCKDocs/pdf/>

For information on third-party software and distribution solutions, see:

<http://www.netscapetogo.com>

For links to information on setting up an ISP, see Appendix A, “Resources for ISPs” (page 145).

Where to Go for Related Information

Getting Started

This chapter provides an overview of the customization and distribution process, a brief introduction to the kinds of customizations you can make with the Client Customization Kit (CCK), and a few simple guidelines for using the CCK Tool.

Before using the CCK tool or this guide, sign up for the Browser Distribution Program:

<http://home.netscape.com/bisdev/distribution/index.html>

This chapter contains these sections:

- Why Customize and Distribute Netscape?
- Overview of the Customization and Distribution Process
- System Requirements
- Platform Support
- Installing the Client Customization Kit Tool
- What Customizations Can I Make?
- Which Customizations Can I Make Quickly?
- Using the CCK Tool

Why Customize and Distribute Netscape?

The Netscape browser is the most customizable browser available today. By customizing Netscape to match your business requirements, you can drive more traffic to your web site, increase revenue, and reduce development and support. Combined with the loyal Netscape customer base and strong brand acceptance, the ability to tailor Netscape to your needs makes it stand out as a powerful business asset compared to other browsers.

Netscape 7.0 can help you

- **Increase Revenue.** Increase customer loyalty by inserting your branding into every component of Netscape 7.0 (browser, Mail, Instant Messenger, and more).

Increase traffic to your site by customizing bookmarks and other links in the browser interface. Include your own tabs in the sidebar to give your customers even more prominent and persistent access to your revenue-generating content and services.

- **Decrease Costs.** Reduce support costs by integrating online support. By customizing Sidebar, the Personal Toolbar and the Help menu, you can drive your customers to your online support and away from costly phone calls. In addition, Netscape 7.0 has demonstrated superior performance and stability, especially for low-bandwidth customers.
- **Attract Customers.** The Netscape brand can differentiate your product. With over 20 million current users and a well respected brand throughout the industry, Netscape can make the decisive difference between you and your competitors. Netscape's unusually loyal customer base makes this particularly true.

People want the Netscape browser. Internal research repeatedly shows that among people who choose their software, more pick Netscape than any other browser.

Why Do Users Prefer Netscape 7.0?

While many people are loyal to the Netscape brand, others choose it because of the product benefits. Netscape 7.0 lets them do more online and exercise fine-grained control over their online experience. It also delivers greatly enhanced performance and stability:

- **Efficiency in completing tasks.** Netscape 7.0 has been designed with efficiency in mind, to reduce the number of steps—and time—it takes to get things done on the Web.

Features include integrated Search to help you find what you need in fewer steps; Quick Launch to dramatically reduce start-up time; a download dialog to prevent you from losing files; Form Manager to complete long web forms in just two clicks; Email Address Collection so you will never lose an email address again; and integrated Instant Messaging for immediate access to your online buddies.

- **More choice.** Choice is particularly important to people who use the Web frequently. They want the power to choose how they work online and what their online environment is like.

Netscape let's you choose which tabs to include in Sidebar (choose among hundreds or create your own), set default mail and news server settings, (including AOL Mail, Netscape WebMail, as well as other IMAP and POP accounts like Yahoo), and even modify the user interface (customize bookmarks and the Personal Toolbar or add a Help menu item).

- **Safety with more control.** If you are concerned about safety, you want to be able to control your environment. Netscape 7.0 delivers more control over the privacy and security of your Internet experience than any other browser.

The Cookie Manager lets you review the cookies you have and easily reject all cookies, past and future, from web sites you do not trust. The Password Manager can conveniently remember your various passwords for different sites, and you can set a Master Password to encrypt that information and other data so you can safely share your computer with family and co-workers.

To learn more about Netscape 7.0, see

<http://channels.netscape.com/ns/browsers/default.jsp>.

Overview of the Customization and Distribution Process

Here's an overview of the main steps you'll follow to customize and distribute your own version of Netscape 7.0:

1. **Set up your ISP.** If you are setting up your ISP business, you must first do the necessary business and financial planning; set up your servers, Internet access, and other physical infrastructure; and plan for post-distribution customer support. For sources of information on these topics, see Appendix A, "Resources for ISPs" (page 145).
2. **Register for the Browser Distribution Program (BDP).** For details, see <http://channels.netscape.com/ns/browsers/partners/bdp.jsp>
Registration gives you permission to distribute the Netscape browser. See the license available at the BDP site for details.
3. **Decide which customization strategy you want to pursue.** You have three choices:
 - Distribute Netscape 7.0 without making any customizations. If you choose this option, you can skip to Step 9 below.
 - Customize and distribute Netscape 7.0 yourself by following the remaining steps in this section.
 - Use the Netscape to Go program to customize Netscape 7.0 to your specifications. If you choose this option, visit <http://www.netscapetogo.com/> to make your customization arrangements and skip to Step 10 below.
4. **Use the CCK tool to make the simplest customizations.** Follow these steps:
 - a. Download and install the Client Customization Kit
 - b. Review the rest of this chapter and make sure your available hardware and software meets the system requirements.
 - c. Follow the instructions in Chapter 2, "Customizing Netscape in Ten Minutes" (page 39) for making the simplest customizations. Even if you want to make some of the more complex customizations described in the rest of this document, this chapter can help you get acquainted with the CCK tool quickly.

- d. Based on the information in this chapter and Chapter 2, determine what customizations you want to make and which platforms you want to create installers for.
 - e. If the customizations you want to make are limited to the simple ones described in Chapter 2, you can skip to Chapter 12 or Chapter 13 (see Step 9 below).
- 5. Use the CCK Tool to make more advanced customizations.** Follow these steps:
- a. If you need more information about any CCK tool screen or if you wish to use the CCK tool to make additional customizations that require some file preparation, read the relevant parts of Chapters 3 through 9.
 - b. Prepare your customized files, if any. Use the checklists in this chapter to decide which custom files you need to create. Chapters 5 through 8 provide detailed instructions on specific file customizations.

Note that some customizations don't require you to create a customized file first. For example, to change Navigator's default home page or include your company name in the CD autorun screen, you simply enter this information directly into the tool and let the tool do the rest. See Table 1-1 (page 34) for a list of quick customizations that you can enter directly into the CCK tool.

- c. Start the CCK tool and create a new configuration for the installer you want to create first. Depending on how many installers you want to create and which platforms you want to support, you may have to run the CCK more than once and you may have to create more than one configuration.

For more information about configurations and installers, see Chapter 3, "Using the Configuration Workspace for Customized Files" (page 55) and Chapter 4, "Preparing Operating System, Language, and Installer Information" (page 61).

- d. Run the rest of the CCK tool.

Click Next on each screen after providing the appropriate information.

6. Build and test your installer.

- a. On the CCK tool's last screen, click Build Installer to create your Netscape installer.

- b. Run your custom installer and verify that all your customizations made with the CCK tool have taken effect correctly. For detailed instructions, see Chapter 10, “Verifying Your CCK Tool Customizations” (page 95). If you find any errors, fix the customized files involved (if necessary) and run the CCK tool again to regenerate the installer.
7. **Make additional manual customizations.** These can include advanced customizations for the CD autorun screen, turning of Netscape activation, and other tasks that require direct manipulation of the installation files. For detailed instructions, see Chapter 11, “Manually Customizing the CD Autorun Screen” (page 101) and Chapter 12, “Advanced Netscape Customizations” (page 121).
 8. **Test your manual customizations.** Run your custom installer, verify that all your manual customizations to have taken effect correctly, and if necessary fix any customizations that have not taken effect.

Important: If you make any manual customizations, do not run the CCK tool again for the same configuration, or it will overwrite all your manual customizations.

9. **Prepare for distribution.** Follow these steps:
 - a. If you want to distribute a customized Macintosh installer, follow the instructions in Chapter 13, “Preparing Macintosh Installers and Program Files” (page 129).
 - b. Assemble your CD layout or make your network installer available on your FTP site for download.

If you're providing a CD-based installer, assemble a CD layout that consists of your Netscape installer, related Netscape installation files, and any other files you want to include on the CD.

If you're providing a network-downloadable installer, copy the installer and its associated files to your network's FTP server and provide users with instructions on how to download and run the installer.

Chapter 14, “Distributing Your Installers” (page 135) describes how to prepare your customized installation files for CD and/or online distribution.

- c. If you've created a CD-based installer, prepare it for distribution to your customers.

10. Distribute Netscape and provide appropriate information to your customers regarding installation, initial account setup, and customer support. The steps a customer follows after receiving the a CD from an ISP typically go something like this:

- a. Installs software (including but not necessarily limited to Netscape 7.0), either from a CD or over the network, according to instructions provided by the ISP.
- b. Configures system and browser software for the new account.

Account setup can be done manually or automatically (with the aid of software provided by the ISP). Typically, it involves configuring dialer and modem software, TCP/IP settings, and Netscape 7.0 settings such as email address according to information provided by the ISP.

- c. Connects with the ISP, logs in, and begins using the service.

Details of end-user instructions for installation and account setup vary widely among ISPs. To get you started:

- “Distributing Network-Downloadable Installers or Binaries” (page 141) includes end-user network installation instructions for Windows, Macintosh, and Linux.
- Appendix B, “Manual Account Setup (page 149), summarizes the minimum information your customers need to set up their own accounts for your ISP business.

System Requirements

To use CCK , and to create and test a Windows installer, you need a system that meets these requirements:

- Windows NT, Windows 2000, or Windows XP.
- Pentium 233 MHz (or faster) processor
- 64 MB of RAM (or greater)
- At least 80 MB hard disk space for installation
- At least 65 MB hard disk space for the installed directory and temporary files created by CCK

To create a Linux installer, your Windows system must also meet these requirements:

- The GNU Tools for Microsoft Windows (the Cygnus toolkit) must be installed. You can obtain the Cygnus toolkit from

<http://www.cygwin.com/>

- The volume on which you install the CCK tool must have at least 108 MB of hard disk space in addition to the space described above, for these purposes:
 - Linux Netscape 7.0 tar file: 45 MB. Note: this can be located on a different volume.
 - Expanded Linux Netscape 7.0 files, extracted from the tar file: 45 MB
 - Each Linux configuration created by CCK requires up to an additional 90 MB

To create a Linux installer, download the standard Netscape 7.0 Linux tar file from <http://channels.netscape.com/ns/browsers/partners.jsp> to some convenient location before you run the CCK tool. (The standard Linux installation files are not included in the CCK package and must therefore be downloaded separately—unlike the Windows installation files, which are included with CCK.)

To test a Linux installer, you need a Linux system that meets these requirements:

- Red Hat Linux 6.0, 6.1, 6.2, or 7.0 with X11 R6.

Note: Netscape 7.0 is certified and fully supported on Red Hat Linux, but will run on other Linux distributions, such as Debian 2.1 (or later) or SuSE 6.2 (or later). (The libraries `glibc 2.1` (or higher) and `libjpeg.so.62` (or higher) are required.)

- Pentium 233 Mhz (or faster) processor
- At least 64 MB RAM
- At least 27 MB hard drive space

To create and test a Macintosh installer you need a Macintosh system that meets these requirements:

- Mac OS 9.x to complete custom installer creation with the customized file (CustomizedMacFiles.zip) which is started in CCK.
- Mac OS X.1 to test the customized build. Note that Netscape 7.0 browsers for Macintosh created with CCK have only been tested on Mac OS X

- Power PC 604e 266MHz or faster processor, or G3/G4
- At least 64 MB of RAM
- At least 36 MB of free hard disk space
- At least 50 MB hard disk space for target and temporary files created by CCK

Important: The CCK tool works for only one version of Netscape. For example, in order to customize Communicator 4.x, you must use CCK 4.x, CCK 6.1 allows you to customize Netscape 6.1 only, and CCK 7.0 customizes only Netscape 7.0 software.

Platform Support

The CCK tool can produce installers that run on Windows, Linux, or Macintosh:

- If you set up your CCK configuration for Windows, the resulting installer runs on these platforms:
 - Windows NT
 - Windows 95
 - Windows 98
 - Windows 2000
 - Windows ME
 - Windows XP
- If you set up your CCK configuration for Linux, the resulting tar file can be unpacked and installed on Red Hat Linux 6.0, 6.1, 6.2, or 7.0 with X11 R6.
- If you set up your CCK configuration for Windows, you can use the resulting files as described in Chapter 13, “Preparing Macintosh Installers and Program Files” (page 129), to create a customized Mac OS 9 installer or a customized version of Mac OS X.

Installing the Client Customization Kit Tool

Before you install CCK, be sure to read the current Release Notes, which describe known problems and workarounds:

<http://home.netscape.com/eng/mozilla/ns7/relnotes/cck.html>

You must also sign up for the Browser Distribution program before you can use the CCK tool or distribute customized installers:

<http://home.netscape.com/bisdev/distribution/index.html>

To install the Client Customization Kit after you've downloaded the setup file:

- Double-click the file `NSCCKsetup.exe`.
- Follow the instructions provided by the installer program to install CCK.

What Customizations Can I Make?

The CCK tool allows you to make any or all of the customizations listed in the following sections.

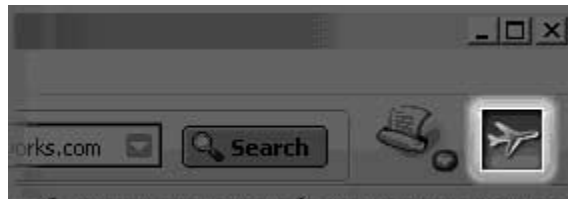
Netscape Navigator Customizations

The Netscape Navigator browser is generally the first screen users see when they start Netscape. Customizing the browser allows you to

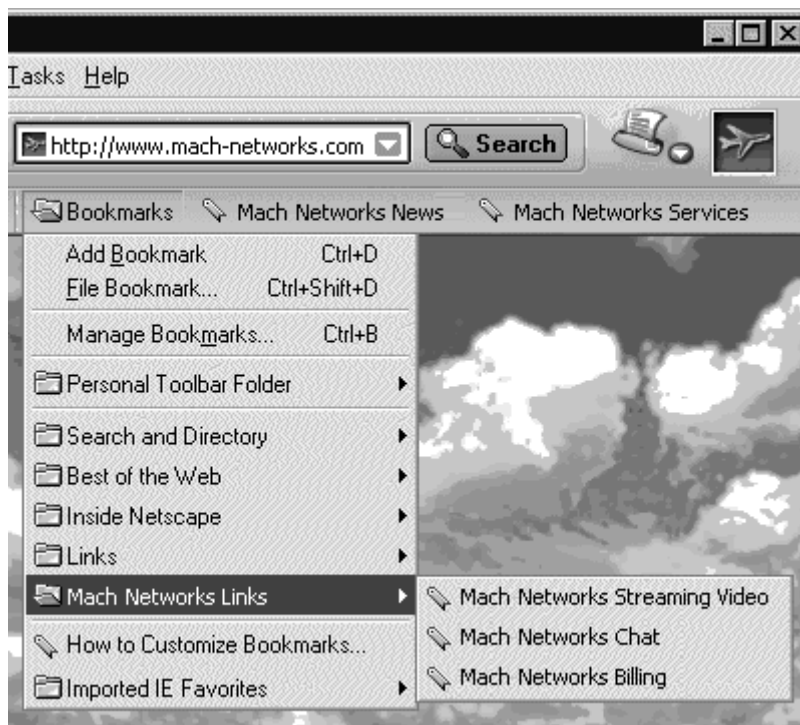
- Bring users back to your web site (home page) every time they start Netscape or open a browser window.
- Create brand awareness and promote customer loyalty.
- Guide users to the web pages you want them to see.

Using the CCK tool, you can make these browser customizations:

- Insert your company's logo to replace the animated Netscape logo in Navigator's toolbar. When users click the logo, they'll go to your home page:



- Customize the bookmarks file and personal toolbar buttons.



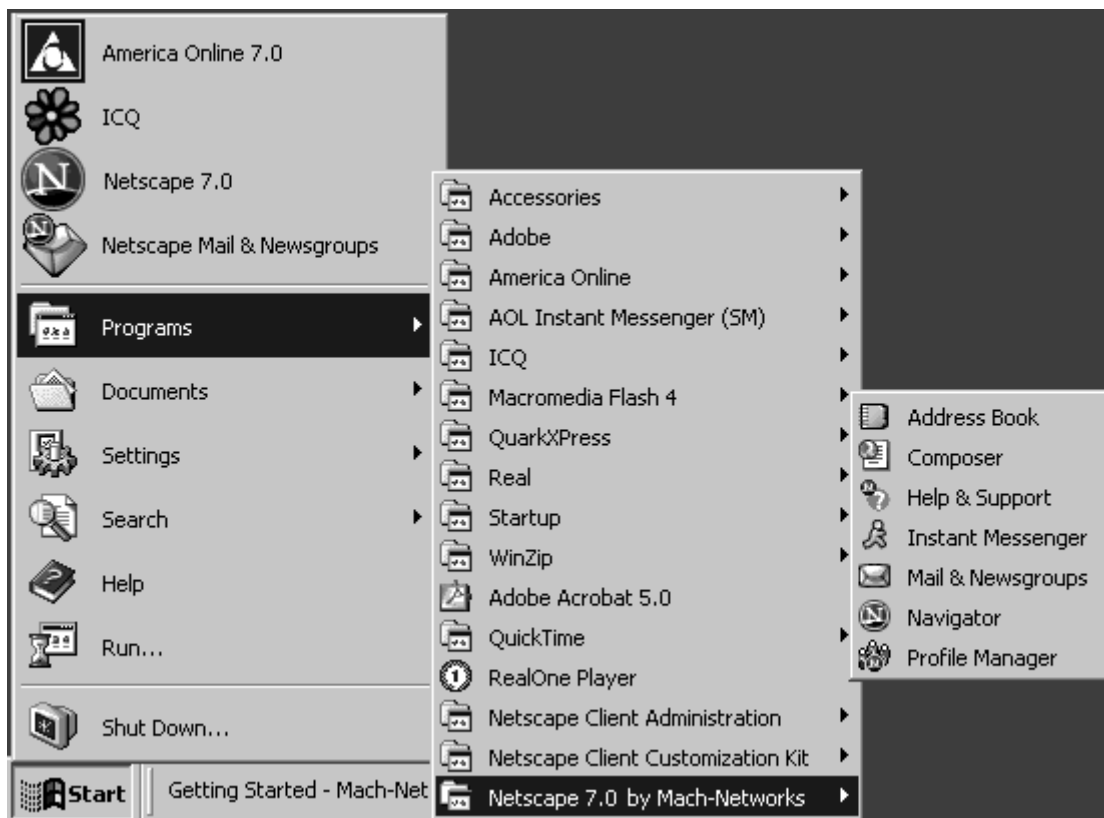
- Add your company name to the browser window title bar and change Navigator's default home page to your company's home page.



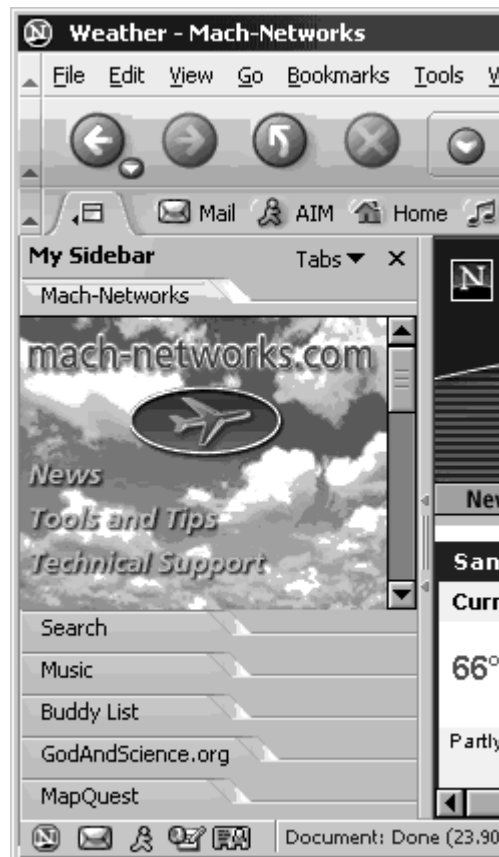
- Add an item to the Help menu that takes users to your online technical support page.



- Include your own customized read-me file and add your company name to the program folder name in the Windows Start menu.



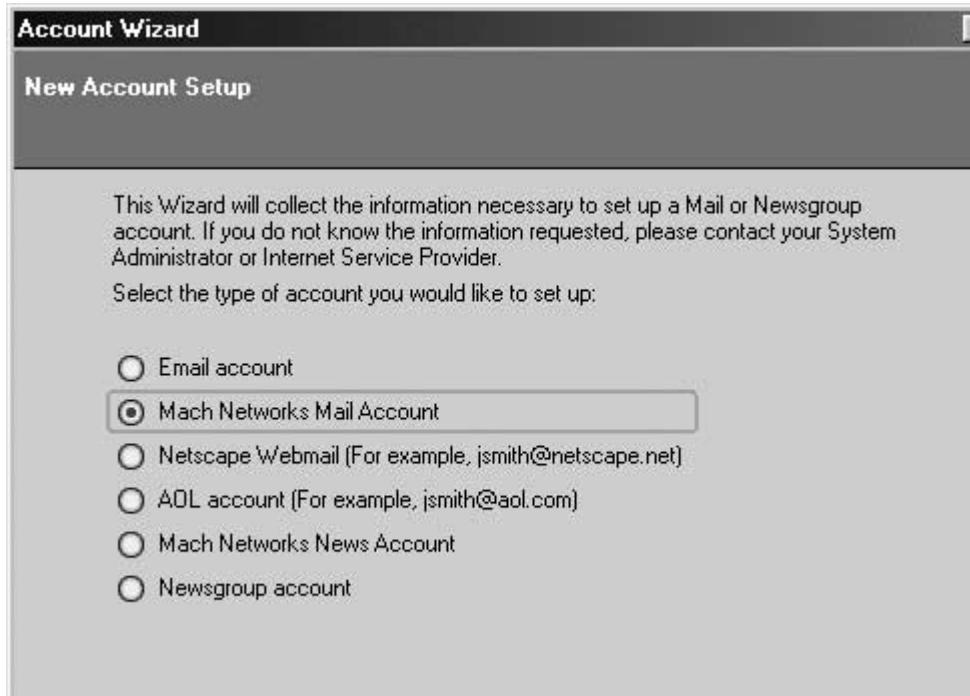
- Add your own sidebar to those that are visible when the browser opens a new profile for the first time.



- Set default proxy preferences

Mail and News Customizations

You can specify Mail and Newsgroup server settings to simplify account set up for your customers. For example, you can customize the options available on the New Account Setup wizard:



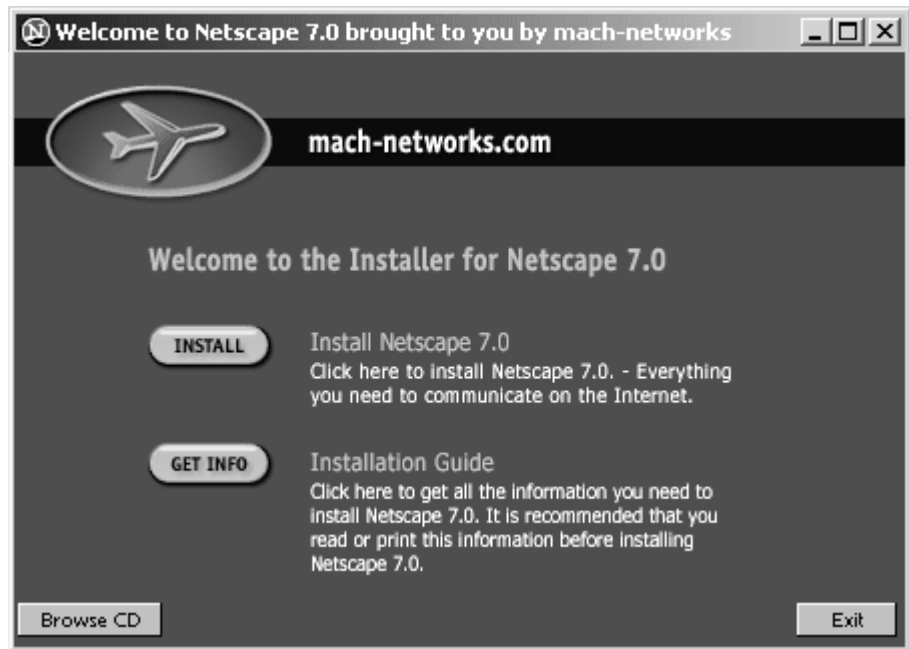
You can also specify domain names, servers, ports, and other details of the default settings the user will encounter while setting up mail and news accounts.

CD Autorun Screen Customizations

The CD autorun screen automatically appears when a user inserts a Netscape CD into a CD-ROM drive. Using the CCK tool, you can make these customizations to the standard CD autorun screen:

- customize the CD autorun screen's background bitmap image
- provide your own title bar text and include a line of text below the title bar
- customize the contents of the installation guide text file

This illustration shows some of the elements you can customize in the standard CD autorun screen:



Installer Customizations

CCK creates a Netscape installer that is both CD- and network-ready. Navigator is part of every installer. You can select which of the following components you want your installer to include:

- Sun Java 2
- Mail & Instant Messaging
- Quality Feedback Agent
- Spell Checker
- AOL ART Extensions
- Net2Phone
- Macromedia Flash Player
- AOL on Desktop

- RealPlayer 8
- Viewpoint Media Player
- Winamp
- HP Printer Identifier Plug-in
- Classic Skin
- Canadian region pack

Some components are not available on all platforms. See Table 9-1 (page 92) for details.

Customization Services Options

If you don't want to make the customizations yourself, Netscape To Go makes it easy, efficient, and economical for you to distribute customized versions of Netscape by providing these services:

- Build a custom version of Netscape 7.0 to your specifications.
- Create custom-branded disc art and packaging using your company logo.
- Duplicate unlimited custom or standard CDs based on your requirements.

For more information and convenient online ordering, go to

<http://www.netscapetogo.com/>

Which Customizations Can I Make Quickly?

Some customizations don't require you to create a customized file before you start using the CCK tool. If you just want to make some quick customizations, such as changing Navigator's default home page or including your company name in the CD autorun screen, you simply enter this information directly into the CCK tool.

Table 1-1 summarizes the quick customizations you can make.

Table 1-1 Quick Customizations Checklist

Component	What You Can Customize
CD autorun screen	Display your company name on the CD autorun screen that users see when they insert the Netscape CD.

Table 1-1 Quick Customizations Checklist

Component	What You Can Customize
Help menu	Add your own menu item and URL to Netscape's Help menu. This URL can take users to your own online customer support page.
Navigator	Change Navigator's default home page. Display your company name in the browser window's title bar. Append your company identifier to Navigator's user agent string.
Program folder name	Append your company name to Netscape's program folder name in the Windows Start menu.
Mail and News server settings	Set the default domain and server settings for Netscape Mail and News.
Proxy Configurations	Set up the default proxy configurations for Netscape.

Using the CCK Tool

To run the CCK tool, open the Start menu and choose Programs, then Netscape 7.0 Client Customization Kit, NSCCKTool.

The CCK Tool uses a standard Wizard interface to guide you through the process of customizing Netscape 7.0. When you finish entering the information for a given screen, you click Next to proceed to the next screen.

For a quick hands-on tour of the simplest customizations, see Chapter 2, "Customizing Netscape in Ten Minutes" (page 39)

Working with CCK Configurations

The first screen of the CCK tool includes a drop-down list that shows what configurations are available. You can work with configurations in the following ways:

- Choose an existing configuration from the drop-down list, and run the CCK Tool using that configuration.
To view the current settings for the selected configuration, click Show Config Info.
- Choose an existing configuration from the drop-down list, click Create a Copy, and run the CCK Tool using the copy.

This option lets you create a new customized installer that's based on an existing configuration, without overwriting the existing configuration (similar to a Save As operation).

- Click New Configuration to create a new configuration, and run the CCK Tool using the new configuration.

For more information about CCK configurations, see Chapter 3, "Using the Configuration Workspace for Customized Files" (page 55).

Saving Changes

Each time you click Next in a CCK screen, the information you entered or changed on that screen is automatically saved with your configuration.

You can exit the tool at any time and continue working with your configuration later.

To exit the CCK tool, click the Exit button on any screen. When you click Exit, the information you entered in previous screens (but not in the screen where you clicked Exit) is saved with your configuration.

You relaunch the tool at any time to continue entering information for that configuration.

Reviewing and Verifying Your Customizations

To review all the customizations you entered in the CCK tool before building your installer, click the Show Config Info button on the final Create the Installer screen. You can also go back to any screen and make additional changes before building your installer.

Your custom installer is created in

installation_directory\CCKTool\Configs\my_config\Output

where *installation_directory* is the directory where you installed the CCK tool and *my_config* is the name of the configuration you are customizing.

Run your custom installer and verify that all your customizations have taken effect correctly. If you find any errors, fix the customized files involved (if necessary) and run the CCK tool again to regenerate the installer before proceeding with any manual customizations.

For more information about verifying the customizations you make with the CCK tool, see Chapter 10, “Verifying Your CCK Tool Customizations” (page 95).

Getting Help

To get help while using the CCK tool:

- Click the Help button in any of the main CCK tool screens for information about using that screen.
- To see an example of a particular customization, click the Show Example button.

Customizing Netscape in Ten Minutes

This chapter shows you how to use the CCK tool to implement some of the simplest customizations—that is, those that don't require you to prepare any files beforehand.

Other customizations that you can perform with the CCK tool, such as providing your own custom bookmarks or custom animated logo, require that you create customized files before you run the tool. Later chapters describe the preparations required for those customizations.

This chapter contains these sections:

What You'll Customize
Quick Customization Instructions
Verifying Your Customizations

What You'll Customize

This chapter describes how to create a CD-based Netscape installer for use on Windows that includes these customizations:

- Your company name displayed in these locations:
 - Browser window's title bar.
 - CD autorun screen, which is the screen that users see when they insert the Netscape CD into a CD-ROM drive.
 - Netscape program folder name that appears in the Windows Start menu.

- The browser's default home page set to your own home page. The home page is the first page users see when they start Navigator and the page they see when they click the Navigator Home button.
- Mail and News server settings.
- Bookmarks, Personal Toolbar entries, and Sidebar tabs that connect your customers to links with content of your choosing.
- A Netscape installer that installs only the components you want users to have.

If these are the only customizations you need to make, your installer will be ready for packaging and distribution after you finish this chapter.

Even if you plan to make some of the additional customizations that require preparing files, it's still a good idea to follow the steps described in this chapter as a way of familiarizing yourself with the CCK Tool. Once you have prepared the additional files you need, you can run the tool again to add those customizations to the ones you make in this chapter.

Quick Customization Instructions

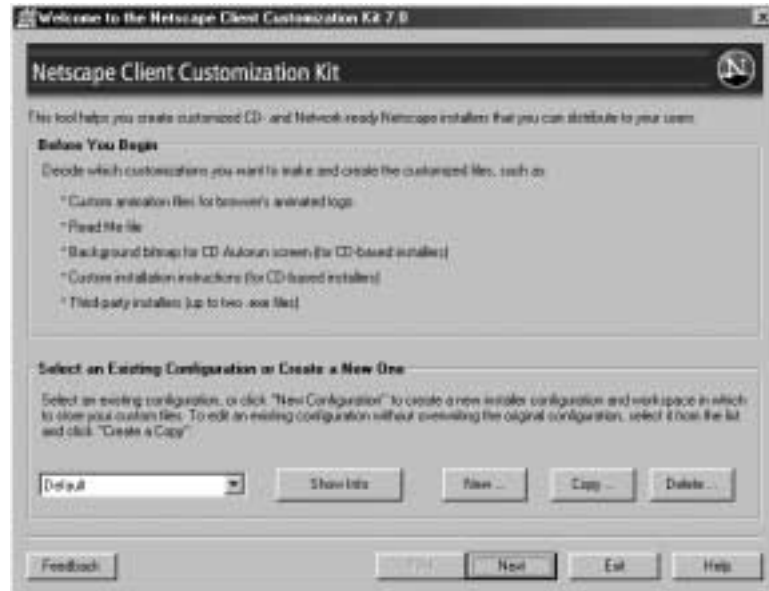
This section guides you through the process of running the CCK tool, which is basically the same whether you are performing the simple customizations described here or those requiring some file preparation as described in the chapters that follow.

The examples shown in this section are based on the sample configuration provided with the tool for a hypothetical ISP called Mach Networks. You should, of course, enter the equivalent information for your own company in each screen.

The steps that follow describe how to create a customized Netscape installer that implements the simple customizations described in the previous section.

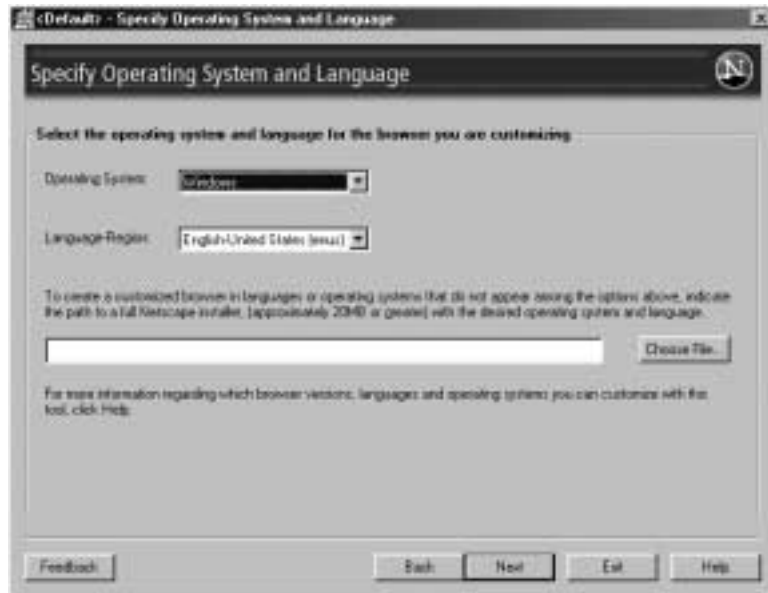
1. Open the Start menu and choose Programs, then Netscape Client Customization Kit, then NSCCKTool.

- Welcome to the Netscape Client Customization Kit!** On the first screen you see when you run the CCK Tool, click New Configuration, enter a name for the directory that the CCK tool will use to store your custom configuration information, and click Create New Configuration. Then click Next to continue.

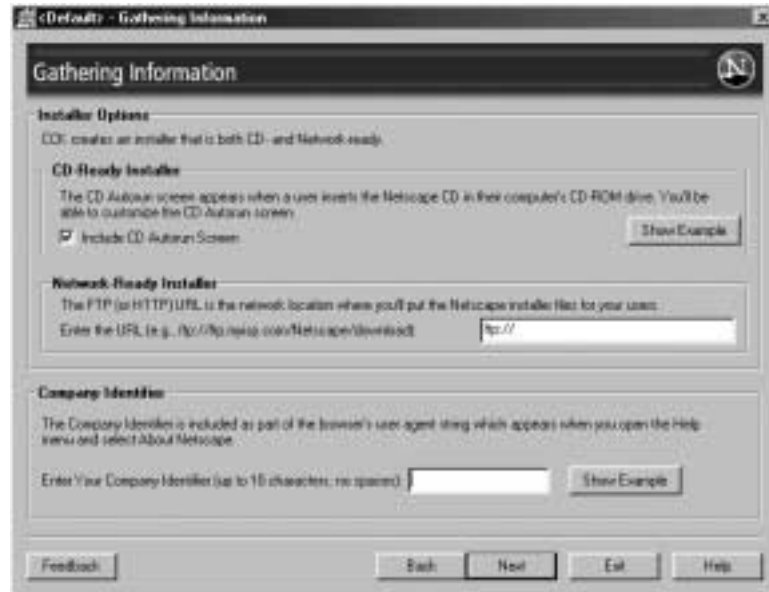


- 3. Specify Operating System and Language.** You can choose to generate a Windows or a Linux installer. It's also possible to create a Macintosh installer by manipulating the installation files produced for a Windows installer. You can also create installers in other languages.

For now, leave Windows as the operating system and English as the language.



4. **Gathering Information.** This screen specifies whether you want a CD-ready installer, the FTP or HTTP address, if any, you plan to use for a network-ready installer, and the company identifier that will appear as part of the user agent string.



- o Confirm that the checkbox labeled “Include CD Autorun Screen” is selected.
- o Enter your company identifier in the field for that purpose near the bottom of the screen

The company identifier you enter will be included as part of the user agent string, which helps identify the browser type each the browser accesses your web site or any other web site. Your identifier in the user agent string allows your company (or others) to track the number of times Internet web sites are accessed by web browsers that you've customized.

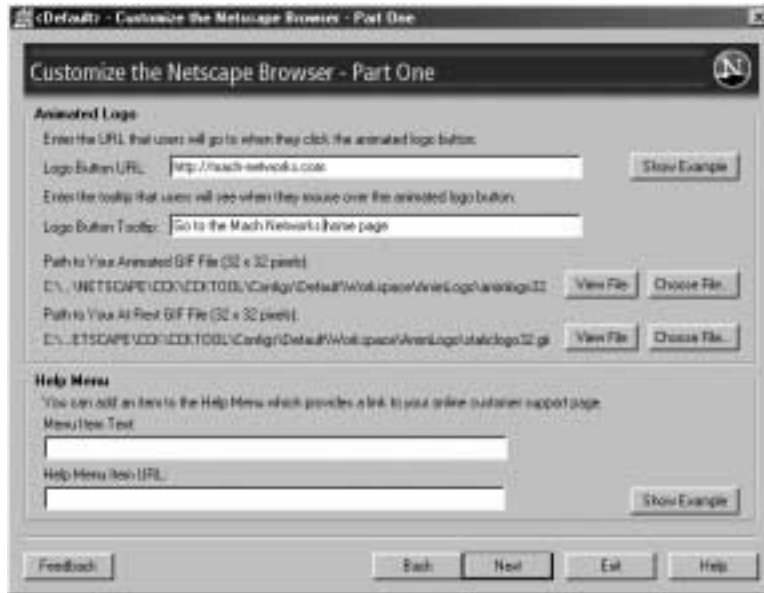
The identifier you supply can be up to 10 characters in length. You must supply one.

For example, if you enter “MachNet” in the Company Identifier field, the resulting user agent string would look like this:

```
Mozilla/5.0 (Windows; U; WinNT5.0; en-US; rv:1.0.1rc2)
Gecko/20020823 Netscape/7.0 (CK-MachNet)
```

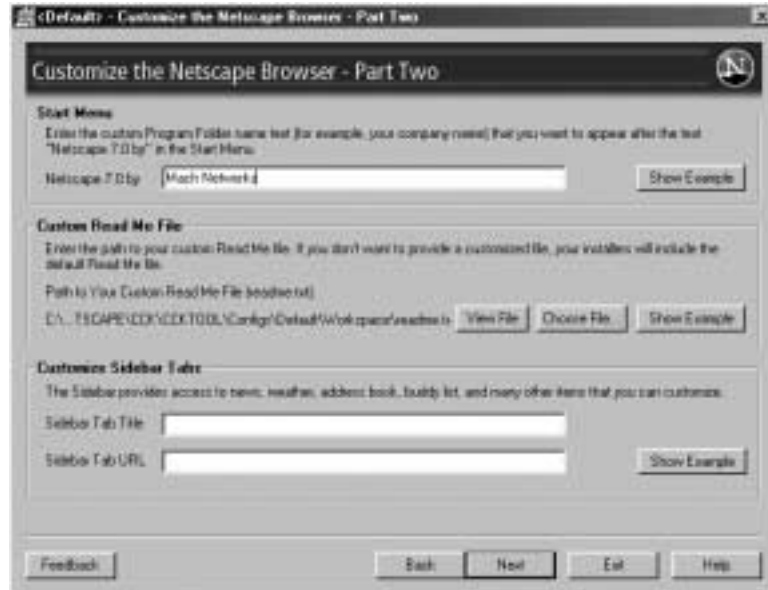
When you are ready, click Next to register the customizations you've made on this screen and proceed to the next screen.

5. **Customize the Netscape Browser - Part One.** This screen allows you to customize the animated logo near the upper-right corner of the Navigator window and to add a Help menu item.



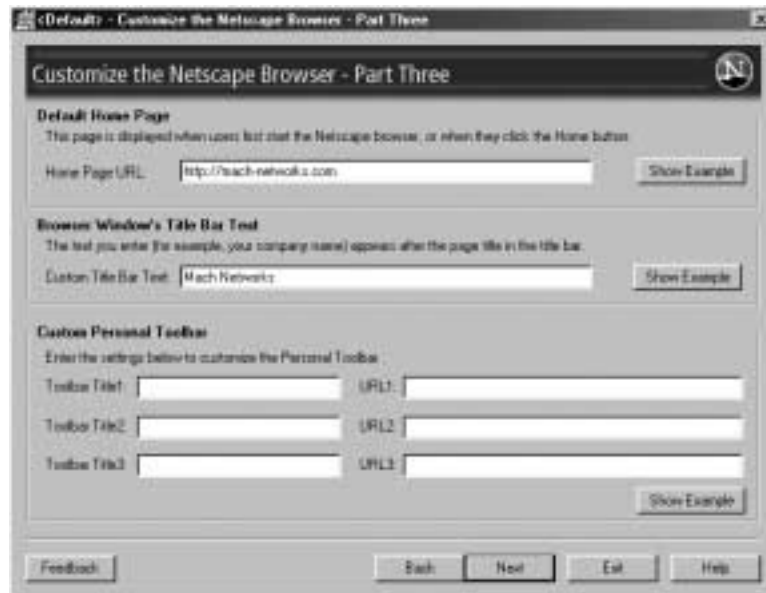
For now, you won't be performing these customizations—but you can come back and do them later if you wish. Just click Next to proceed to the next screen.

6. **Customize the Netscape Browser - Part Two.** This screen specifies the program folder name that appears under Start Menu/Programs, a custom read-me file, and the files to use for a custom animated logo.



For now, just enter your company name in the Start Menu section, then click Next.

7. **Customize the Netscape Browser - Part Three.** This screen specifies the default home page, bookmarks file, and title bar text.

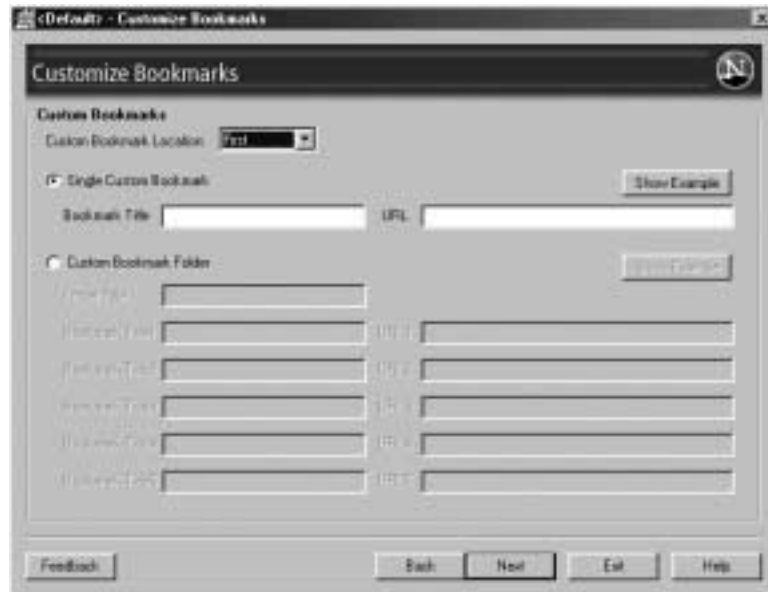


- o Under Default Home Page, enter the URL for the web page that you want to assign as Navigator's default home page.

- Under Browser Window's Title Bar Text, enter your company name.

Click Next to continue.

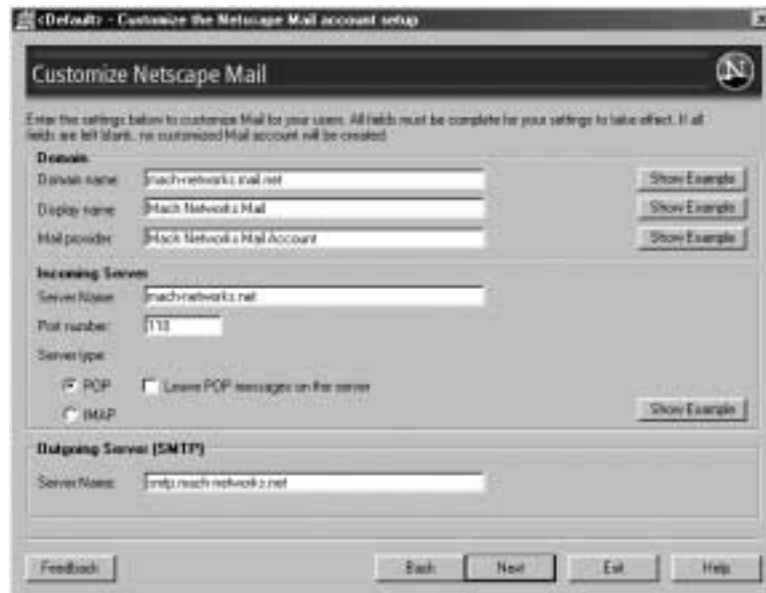
Customize Bookmarks. This screen enables you to add a single bookmark, or a bookmark folder containing up to five bookmarks.



Under Bookmark Title, enter the name you want to appear in the Bookmarks menu. In the URL field, enter to URL to which you want the bookmark to connect.

Click Next to continue.

- 8. Customize Netscape Mail.** This screen specifies your mail domain and server information.



If you choose to provide customized mail settings, fill in every field in the Customize Netscape Mail screen. You must fill in all fields, otherwise no customized mail server settings will appear in your customized version of Netscape 7.0.

For short descriptions of the information to enter in each field, click the Help button. For examples of the settings that each field controls, click the corresponding Show Example buttons. Click Next when you are finished.

IMPORTANT NOTE: If you customize Mail, you should disable Netscape activation after you create your custom Netscape installer. For details, see Netscape Activation Considerations for Mail and News (page 78).

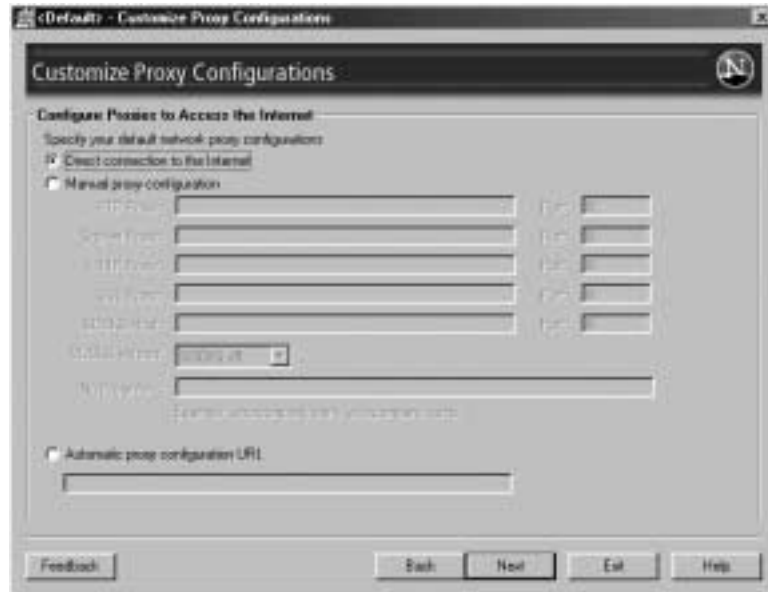
9. **Customize Netscape News.** This screen specifies your mail domain and server information.

If you choose to provide customized news settings, fill in every field in the Customize Netscape News screen. You must fill in all fields, otherwise no customized news server settings will appear in your customized version of Netscape 7.0.

For short descriptions of the information to enter in each field, click the Help button. For examples of the settings that each field controls, click the corresponding Show Example buttons. Click Next when you are finished.

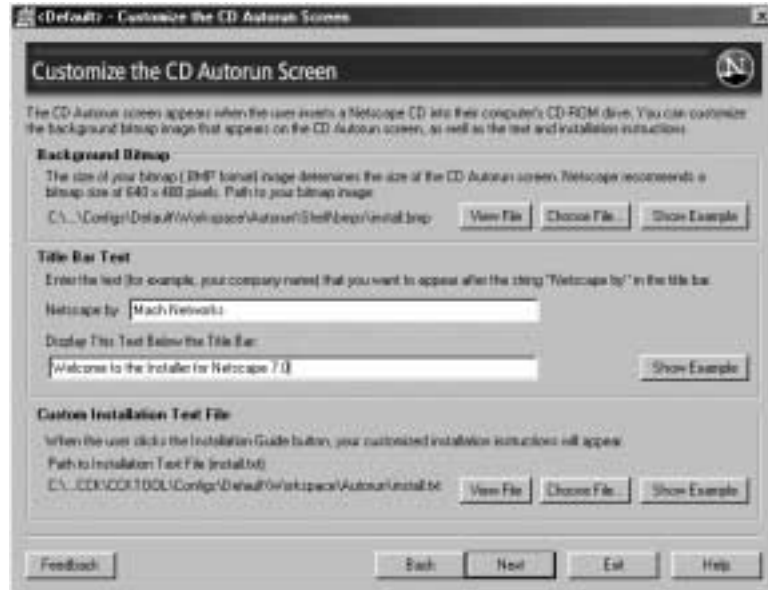
IMPORTANT NOTE: If you customize News, you should disable Netscape activation after you create your custom Netscape installer. For details, see Netscape Activation Considerations for Mail and News (page 78).

- 10. Customize Proxy Configurations.** This screen specifies the default proxy configurations that appear under the Advanced category when the user chooses Preferences from the Edit menu.



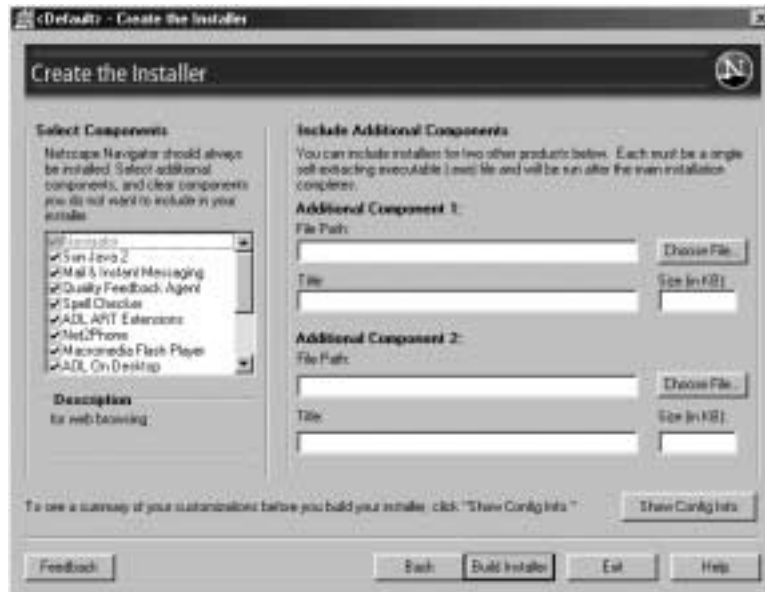
For now, you won't specify any proxy configurations. Click Next to continue.

11. **Customize the CD Autorun Screen.** This screen specifies the background, title bar text, and installation text file for the CD autorun screen that appears when a user inserts the CD with your custom installer on it.



Under Title Bar Text, enter your company name as you want it to appear in the screen's title bar and in the area below the title bar of the CD autorun screen. Then click Next to continue.

12. **Create the Installer.** This screen specifies which Netscape 7.0 components you want to install and up to two additional installers to include with the Netscape 7.0 installer.



Deselect any components in the list on the left that you don't want to include in your installer.

Before building the installer, click To confirm the settings you have selected, click Show Config Info to confirm all the settings you've made to your configuration. If you see any errors, click the Back button repeatedly to return to the screen where the error occurred. After you've corrected any errors, click the Next button for each screen until you see the Create the Installer screen again.

If you are sure all your settings are correct, click Build Installer to create your customized Netscape 7.0 installer.

13. When the CCK tool informs you that your installer has been created, click OK. The CCK tool creates your installer files in this location (where *installation_directory* is the directory where you installed the CCK tool and *my_config* is the directory name you specified in the first screen):

installation_directory\CCKTool\Configs\my_config\Output

Verifying Your Customizations

Once you've created a customized Netscape installer, you should install your customized software in the same way your users will, so you can verify that all your customizations appear exactly as you intended. Follow these steps:

1. Go to the directory that contains your customized installer and its associated files:

```
installation_directory\CCKTool\Configs\myconfig\Output
```

2. Double-click the file `setup.exe`. This causes the CD autorun screen to appear—the same screen your users will see when they insert the CD that contains your customized Netscape installer.
3. Examine the CD autorun screen to verify that it includes your company name in the title bar and in the area below the title bar.
4. Click Install Netscape 7.0 to launch the installer. Choose the Custom installation path so you can verify that the components installed by default are the same ones that you selected using the CCK tool.
5. After the installation is complete, the browser launches and the Netscape Activation screen occurs. If you have customized any mail and news settings, be sure to cancel the Activation screen.

As noted earlier in this chapter, if you customize Mail or News, you should disable Netscape activation after you create your custom Netscape installer. For details, see *Netscape Activation Considerations for Mail and News* (page 78).

6. Choose About Netscape 7.0 from the Help menu and verify your customized user agent string, which should appear near the top of the window. For the Mach Networks example, :

```
Mozilla/5.0 (Windows; U; WinNT5.0; en-US; rv:1.0.1rc2)
Gecko/20020823 Netscape/7.0 (CK-MachNet)
```

7. Verify that the Netscape program folder name in the Windows Start/Programs menu includes your company name.
8. Click the Home button in the Navigator browser to verify that it takes you to the URL you specified, and check the browser window title bar to verify that it includes your company name.
9. Verify that the Mail and News account settings are correct.

That's all there is to it. If these are the only customizations you want to make, you're ready to begin preparing for distribution:

- If you want to create a Linux or Macintosh installer, see Chapter 4, “Preparing Operating System, Language, and Installer Information.” (page 61).
- If you want to create a Macintosh installer, you should also see Chapter 13, “Preparing Macintosh Installers and Program Files” (page 129).
- When you are ready to distribute your installers, see Chapter 14, “Distributing Your Installers” (page 135).

Using the Configuration Workspace for Customized Files

As you saw in Chapter 2, “Customizing Netscape in Ten Minutes,” the first screen presented by the CCK tool allows you to select a configuration (or create a new one). Each configuration available to the CCK tool has a corresponding directory where the installer for that configuration resides.

The configuration directory also includes a Workspace directory. If you need to do create an animated logo or customize bookmarks, the default My Sidebar tabs, the read-me file, and other aspects of Netscape 7.0. that require you to prepare files before running the CCK tool, you can use the Workspace to store your customized files while you work on them.

This chapter describes the contents of the configuration directory, the files you can customize, and where to store them in the Workspace directory. The chapters that follow summarize how to prepare the information and files relevant to each of the remaining screens presented by the CCK tool.

This chapter contains these sections:

- Creating a New Installer Configuration
- The Configuration Directory
- Customized Files Checklist
- Platform and Configuration Information

Creating a New Installer Configuration

The first screen of the CCK tool includes a drop-down list (near the lower-left corner) that allows you to select a configuration. You can also use this screen to create a new configuration or create a copy of an existing configuration.

Each configuration name in the drop-down list corresponds to a configuration directory of the same name (described in detail in the section that follows). A configuration directory stores both customized files that you supply for use by the CCK tool and the customized Netscape 7.0 installation files created by the CCK tool.

The CCK tool applies the customizations you specify to the configuration selected in the first screen. If you are customizing features that require you to prepare custom files in advance, you should prepare and verify those files before you run the tool.

The rest of this chapter describes the layout of the configuration directory and summarizes the files you must prepare for various customizations. The chapters that follow describe how to prepare the customized files for the customizations you can specify with the CCK tool.

The Configuration Directory

Each configuration name listed in the drop-down list on the first screen of the CCK tool corresponds to a directory name in this location:

```
installation_directory\CCKTool\Configs\my_config\
```

After you run the CCK tool for a given configuration, the corresponding configuration directory contains the following subdirectories and files (assuming the configuration includes a CD autorun screen as well as a network installer):

- Output contains all customized installation files:
 - Core
 - Shell
 - autorun.inf
 - install.txt
 - launch.ini
 - setup.exe

- **workspace** includes the following subdirectories for storing your customized files:
 - **AnimLogo** stores the .GIF files associated with the animated logo button. See **Customizing the Netscape Browser** for the instructions to create these files.
 - **Autorun** stores a custom background image for the CD autorun screen. See **Customizing the CD Autorun Screen** for the instructions to create the custom files.

In the default and sample Mach Networks configurations, `license.txt` and `readme.txt` (the Netscape license and read-me files) are located in the `Output` directory. In all other configurations, these two files are located one level higher (in the `my_config` directory).

Customized Files Checklist

Table 3-1 lists the customizations that require customized files and where to find information about preparing those files.

Table 3-1 Netscape 7.0 customized file checklist

To make this Netscape customization	You'll need to provide	Location in Workspace directory	Chapter in this guide
Animated logo	Animated and at-rest GIF files (32 x 32) for the animated logo	AnimLogo	Chapter 5, "Preparing to Customize the Netscape Browser" (page 67)
Custom background graphic for CD autorun screen (for CD-based installers)	640 x 480 bitmap file containing your custom background image	Autorun	Chapter 8, "Preparing to Customize the CD Autorun Screen" (page 83)
Custom installation text file	install.txt	CustInst	Chapter 8, "Preparing to Customize the CD Autorun Screen" (page 83)
Additional installers	The setup.exe for each additional installer (up to two)	CustInst	Chapter 9, "Preparing to Create the Installer" (page 91)
Custom Read-me file	readme.txt	top level of Workspace	Chapter 5, "Preparing to Customize the Netscape Browser" (page 67)

Platform and Configuration Information

Table 3-2 summarizes the Netscape 7.0 customizations you can make with the CCK tool and the platforms on which they are supported.

Table 3-2 Summary of CCK tool customizations

CCK Customization	Windows	Linux	Mac OS
Read-me file	Yes	No	No
CD autorun screen	Yes	No	No
Network-ready installer	Yes	No	No
Selecting and deselecting components	Yes	Yes	No
Additional (third party) components	Yes	No	No
Animated GIF file of product logo in Modern theme	Yes	Yes	Yes
Static GIF file of product logo in Modern theme	Yes	Yes	Yes
Help menu item text and help menu item URL	Yes	Yes	Yes
Sidebar tabs	Yes	Yes	Yes
Default home page URL	Yes	Yes	Yes
Bookmarks	Yes	Yes	Yes
Browser window's title bar text	Yes	Yes	Yes
Mail settings	Yes	Yes	Yes
News settings	Yes	Yes	Yes
Proxy settings	Yes	Yes	Yes

Preparing Operating System, Language, and Installer Information

The second and third screens presented by the CCK tool allow you to choose a platform and specify other basic information about your installer.

This chapter describes the information you need to prepare for these initial screens. It contains these sections:

Deciding What Kinds of Installers to Create
Choosing a Company Identifier
Checklist for Platform and Installer Screens

Specifying an Operating System

The CCK tool can generate an installer for use on Mac OS, Windows, and Linux.

Windows

No special preparation is required to create a Windows installer; from the second screen of the CCK tool, titled Specify Operating System and Language, select Windows from the drop-down list.

The Windows installation files produced by the CCK tool will run on these systems:

- Windows NT
- Windows 95
- Windows 98

- Windows 2000
- Windows ME
- Windows XP

Linux

To prepare a Linux installer, first download a Netscape 7.0 Linux tar file to some convenient location.

After you choose Linux as the operating system for the current configuration on the second screen of the CCK tool, called Specify Operating System and Language, you can specify that location in the field provided.

You need to specify the location of the Linux tar file only once. After you do so, the CCK tool creates a directory `CCKTool\nscpxpiLinux\` and stores the decompressed standard Linux installation files there.

If you decide later that you want the CCK tool to start fresh with a Linux tar file, you must delete the directory `CCKTool\nscpxpiLinux\` and its contents. The next time you run the CCK tool, you will again be able to specify the location of the Linux tar file.

In addition to downloading a Netscape 7.0 Linux tar file, you must have GNU Tools for Microsoft Windows (the Cygnus toolkit) installed on the system before running the CCK tool. You can obtain the Cygnus toolkit from <http://www.cygwin.com/>. You must also make sure that the path to the binaries for the Cygwin Unix programs is included in the Windows environment variable called PATH. To check the PATH variable, open the System control panel and click the Environment tab.

After you click the Build Installer button on the last screen of the CCK tool, the tool provides the customized Linux build as a tar file in

```
CCKTool\Configs\my_config\Output
```

You can then transfer this tar file to a Linux system and then extract the contents for testing.

Macintosh

To prepare a Macintosh OS X installer, from the second screen of the CCK tool, titled Specify Operating System and Language, select Mac OS from the drop-down list.

To create a Mac OS 9 installer, follow the instructions in Chapter 13, “Preparing Macintosh Installers and Program Files” (page 129).

Deciding What Kinds of Installers to Create

The CCK tool lets you create two types of installers:

- CD-based installers, for distributing Netscape to your users on a CD
- Network-downloadable installers that users can download from your network, and then install Netscape on their hard disks.

The advantages and disadvantages of each type of installer are described in the sections that follow.

IMPORTANT NOTE: If you have customized Mail and News, you should disable Netscape activation before you make any form of Netscape installer available, or else provide your users with additional instructions. This applies to Linux, Windows, and Macintosh installers. For details, see “Netscape Activation Considerations for Mail and News (page 78).

Providing a CD-Based Installer

Distributing your Netscape installer on a CD has these advantages:

- It’s the best way to distribute Netscape to users who don’t have Internet access or who are new to the web.
- It’s convenient; all the software users need to get started is included on the CD.
- When a user inserts the CD in a CD-ROM drive, the CD autorun screen automatically appears, simplifying installation.
- You can customize the CD autorun screen to make it easy for users to install any other software you want to include on the CD along with Netscape.
- You can customize the CD autorun screen to promote your company’s products, services, and brand identity.

The main disadvantage of distributing Netscape on a CD is you may need to update and re-distribute the CD as newer versions become available.

User Experience of CD-Based Installation

If you've chosen to include the CD autorun screen with your CD-ready installer, it automatically launches when the user inserts the CD. The user can then follow the instructions on the CD autorun screen to install your customized version of Netscape.

If you've customized the CD autorun screen, either by using the CCK tool or by making manual customizations (as described in *Manually Customizing the CD Autorun Screen*), users will see your customized CD autorun screen instead of the standard one.

If for some reason the CD autorun screen is included with the installer but doesn't automatically appear when the user inserts the CD, the user must double-click the `setup.exe` file (Windows) or Netscape 7.0 Installer file located at the CD root to launch the CD autorun screen.

If you've chosen not to include the CD autorun screen, to launch the network installer the user must double-click the `setup.exe` file (Windows) in the root level of the Output directory or the Netscape 7.0 Installer file located at the CD root.

For Mac OS X, the customized files do not require installation: the user simply copies them to a convenient location and double-clicks the Netscape application icon to launch Netscape.

To run the Linux installer, the user must run the install script by typing the command `./netscape-installer`.

Providing a Network-Downloadable Installer

If you distribute your Netscape installer over a network, you don't have to pay for postage, packaging, and CD duplication. Also, as new versions of Netscape become available, you can readily provide them on your web site.

Since users must already have Internet access, distributing Netscape over a network is primarily useful for upgraders or users who want to switch to Netscape from another web browser. Also, users must have a modem capable of transferring data at a rate of 56 Kbps or faster to keep the download time within acceptable limits.

Table 4-1 lists approximate download times for an installation that includes Navigator and Mail only (approximately 11 MB). Actual download times may vary.

Table 4-1

Transfer speed (in Kbits/second)	Transfer rate	Download time (in minutes)
28.8 Kbps	4.86 minutes/MB	53.4 minutes
36.6 Kbps	3.82 minutes/MB	42.01 minutes
56 Kbps	2.47 minutes/MB	27.1 minutes
64 Kbps ISDN	2.2 minutes/MB	24.2 minutes
128 Kbps ISDN	1.09 minutes/MB	11.9 minutes
144 Kbps DSL/Cable modem	.97 minutes/MB	10.6 minutes

To distribute a network-downloadable installer, you'll need to set up an HTTP or FTP (File Transfer Protocol) site so users can download the Netscape installer from your site. You'll also need to tell users where to find the installer and provide them with instructions for downloading it.

User Experience of Network-Downloadable Installer (Windows)

To install Netscape on Windows, a user

1. Launches another browser or HTTP or FTP program and downloads a small (approx. 300 Kbytes) installer program (`NSSetup.exe`) from your FTP site to the user's hard disk.
2. Double-clicks the `N6Setup.exe` program to begin the installation process. The `NSSetup.exe` program displays a series of screens that guide the user through the entire installation process.
3. During the installation process, the installer downloads the necessary Netscape component files from your FTP site and installs them on the user's machine. While downloading is in progress, the user can pause the download process and resume the download later.
4. When the installation is complete, Netscape launches.

Choosing a Company Identifier

The only required item on the Gathering Information screen is your company identifier for the user agent string. The user agent string helps identify the browser type whenever the browser accesses your web site or any other web site. Your identifier in the user agent string allows your company (or others) to track the number of times Internet web sites are accessed by web browsers that you've customized.

The identifier you supply can be up to 10 characters in length.

For example, if you enter `machnet` in the Company Identifier field, the resulting user agent string would look like this:

```
Mozilla/5.0 (Windows; U; WinNT5.0; en-US; rv:1.0.1rc2)
Gecko/20020823 Netscape/7.0 (CK-MachNet)
```

If you are preparing several different customized versions of Netscape, you may want to supply a different user agent string for each one.

Checklist for Platform and Installer Screens

The Specify Operating System and Language screen specifies:

- Whether you want the CCK tool to generate a Windows, a Macintosh, or a Linux installer. The Linux option appears only after you download the tar file.
- The location of the standard Linux tar file for Netscape 7.0 (if you select Linux as the platform).

The Gathering Information screen specifies:

- Whether you want a CD autorun screen.
- The FTP or HTTP URL for a network-ready installer (if any).
- The company identifier to be included in the user agent string for your customized Netscape (required).

Make sure you have this information available when you run the CCK tool.

Preparing to Customize the Netscape Browser

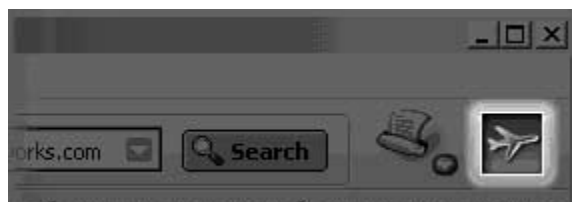
The CCK tool presents three screens that allow you to customize different aspects of Navigator, the Netscape browser. This chapter describes the information and files you need to prepare for these three screens.

This chapter contains these sections:

- Creating a Custom Animated Logo
- Determining a Help URL and Menu Item
- Determining the Name of the Program Folder in the Windows Start Menu
- Preparing a Customized Read-me File
- Creating Your Own Sidebar Tab
- Specifying the Default Home Page
- Determining Text for the Browser Window's Title Bar
- Checklists for Customizing the Browser

Creating a Custom Animated Logo

You can replace the standard Netscape animated logo that appears in the Navigator browser, Netscape Mail, and Netscape Instant Messenger windows with an animated logo for your own company, such as this one for Mach Networks:



If you wish, you can also change the URL for the animated logo button to the URL for your home page, so that when users click the animated logo, they go to your home page instead of `home.netscape.com`.

The animated logo consists of a composite `.GIF` file that contains two or more individual `.GIF` images, or frames, laid end-to-end. When the individual frames in the composite `.GIF` file are displayed in rapid succession, one after the other, the logo graphic takes on the appearance of motion.

Here is a series of separate `.GIF` files that can be used to construct an animated `.GIF` file:



To create your own animated logo, you'll need these tools:

- A graphics editing program or 3D animation program to create the individual `.GIF` files, or frames.
- A `.GIF` file animation program that assembles individual `.GIF` files into one continuous animated `.GIF` file.

You'll need to create the following:

- A static `.GIF` file (32 by 32 pixels) for the at-rest logo.
- An animated `.GIF` file (32 by 32 pixels) for the animated logo.

The browser uses the static `.GIF` file whenever the animated logo is at rest (not animating). When both files are ready, put them in the `Workspace\AnimLogo` directory for your configuration.

The sections that follow outline the steps involved in creating your static and animated `.GIF` files.

Step 1: Create the Animation Frames

You'll need to create the following `.GIF` files (frames):

- Up to 40 (32 pixels by 32 pixels) `.GIF` files for assembling into the animated logo
- One `GIF` file (32 pixels by 32 pixels) that will be used as the "still" image when the animation is at rest

Using a graphics editing program or a 3D animation program, create and save each individual animation frame as a separate `.GIF` file. Keep the animation as simple as possible by using the fewest number of frames that convey the motion you want to achieve.

Follow these guidelines:

- Create no more than 40 frames (files) for the animated logo
- Save your files in `.GIF` format
- Use no more than 30 colors in each file; 16 colors are best.

Step 2: Assemble Your Frames Using a GIF Animation Program

Using your GIF file animation program:

1. Assemble the animation frames in the order in which you want them to appear.
2. Set the duration that each frame will appear.
3. Set the animation to loop infinitely.
4. Preview the animation and make any changes until you're satisfied with the results.
5. Save the animation as a `.GIF` file.
6. Optimize the animation file. Most `.GIF` animation programs allow you to perform some optimization operations that will reduce the size of your animation file.

Note: The animation will play more slowly on computers with slower processors.

Determining a Help URL and Menu Item

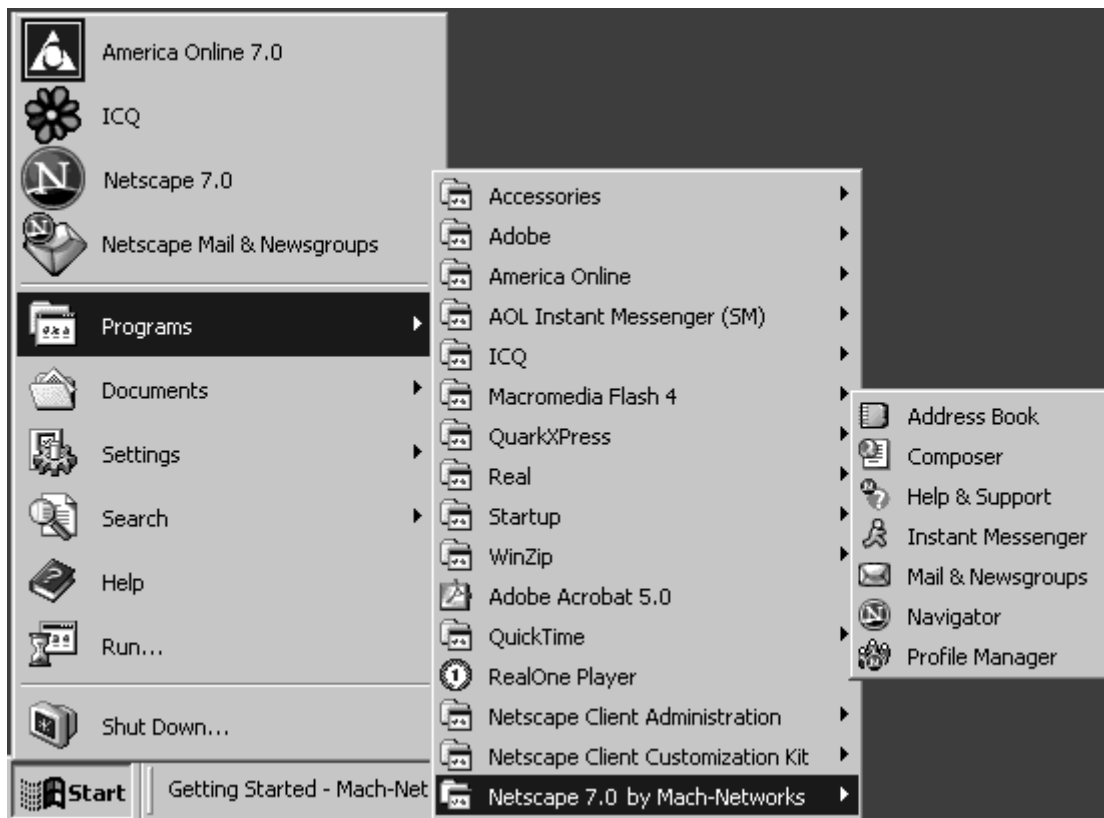
The CCK Tool allows you to add a Help menu item to the Help menu. The name you specify appears as a new menu item above the Release Notes menu item near the bottom of the browser's Help menu. For example: My ISP Customer Support.

If you specify a new Help menu item, you must also specify a live URL for the page to which your menu item will take users and provide appropriate content for that page.

Determining the Name of the Program Folder in the Windows Start Menu

To increase customer awareness of your company name and promote your company's identity to your customers, you can add your company name to the Netscape 7.0 program folder name in the Windows Start menu.

For example, if you specify Mach Networks for use with the Start menu, the program folder name in the Start menu appears as "Netscape 7.0 by Mach Networks" as shown here:



Preparing a Customized Read-me File

Netscape includes a standard read-me file, which you might want to customize if you want to provide additional information to your customers.

Under the terms of the Browser Customization Guidelines, you can edit the existing read-me file or replace it with one of your own, but you must not rename it.

To edit the read-me file:

1. Locate the standard Netscape Read Me (`readme.txt`) file:

`installation_directory\CCKTool\Configs\Default\Workspace`

where *installation_directory* is the directory where you installed the CCK tool.

2. Copy the `readme.txt` file to your own Workspace directory

`installation_directory\CCKTool\Configs\my_config\Workspace`

where *my_config* is the name of the configuration you are customizing.

Using a standard text editor such as WordPad, edit `readme.txt` or replace its contents with your own information. When the file is ready, put it at the top level of the `Workspace` directory for your configuration (for easy access when you run the CCK tool).

Creating Your Own Sidebar Tab

My Sidebar tabs provide a place within the Netscape 7.0 browser for users to keep connected to what is most important to them. Tabs are a great place for favorite information, such as stock quotes, local weather, news headlines, sports headlines, local events, or horoscopes. Users can choose from a wide variety of tabs in the My Sidebar Directory.

Netscape 7.0 comes with several sidebar tabs already set up. However, you can customize the browser by adding, removing, and rearranging tabs for your users. By creating a sidebar tab, you give your content constant presence within the user's client software. This means that users always have access to your service or content even when they are on another web site or using email. Links in your tab can lead back to your web site, driving increased traffic; and you can reduce service calls by making technical information easily accessible through your sidebar tab.

The sidebar appears on the left side of Navigator, Mail, and Instant Messenger windows of Netscape 7.0. Here's an example of a custom sidebar tab for Mach Networks:



To create a sidebar tab, see the instructions posted at

<http://home.netscape.com/sidebar>

To add a sidebar tab, create your tab, and in the CCK tool on the fifth screen, "Customize the Netscape Browser - Part Two," enter the tab title and the URL for the tab.

To add multiple tabs, or to rearrange tabs, see the following sections.

Specifying the Default Home Page

There are many advantages to leaving the default home page as it is. The Netscape web site provides a huge range of links and services, and you can provide these two your customers at no extra cost simply by leaving the default home page as it is.

However, if you wish to change the home page to a URL of your choice, you can do so by typing the URL in the CCK tool screen entitled “Customize the Browser - Part Three.” The URL you specify determines both the first page launched and the page users will see when they click the Home button.

Determining Text for the Browser Window’s Title Bar

You can add your company name to the browser window’s title bar, so that your company name appears at the top of every browser window. For example, this illustrates the customized browser window's title bar for a company called Mach Networks:



If you decide you want to customize the browser in this way, you simply specify your company name when the CCK tool displays the screen entitled “Customize the Browser - Part Three.”

Checklists for Customizing the Browser

Customize the Browser - Part One

The screen called Customize the Browser - Part One specifies this information:

- Animated logo:
 - Logo button URL
 - Path to animated GIF file (stored in `Workspace\AnimLogo`)
 - Path to “at rest” GIF file (stored in `Workspace\AnimLogo`)
- Help Menu Item:
 - Menu item text
 - Menu item URL

Customize the Browser - Part Two

The screen called Customize the Browser - Part Two specifies this information:

- Text added to “Netscape by” in the name of the Netscape program folder in the Windows Start menu
- Path to custom read-me file (stored at top level of `workspace`)
- URL and title for a customized sidebar tab

Customize the Browser - Part Three

The screen called Customize the Browser - Part Three specifies these customizations:

- Default home page URL (first page launched and Home button)
- Text that appears after the page title in the title bar
- URLs and titles for customized personal toolbar entries

Preparing to Customize Netscape Mail and News

The CCK tool includes two screens that enable you to specify default domain and server settings for new mail and news accounts created with your customized version of Netscape. This chapter describes the information you need to have on hand if you want to customize these mail and news settings.

This chapter contains these sections:

- Specifying Mail Domain and Server Settings
- Specifying News Domain and Server Settings
- Netscape Activation Considerations for Mail and News
- Checklists for Customizing Mail and News

Specifying Mail Domain and Server Settings

Before specifying custom mail domain and server information, you should set up and test your mail server and confirm the settings described here.

Domain Settings

The CCK tool allows you to specify this mail domain information:

- **Domain name.** The default email domain that you want to appear in the Netscape Mail account settings. For example, if you enter "mach-networks.net" in this field, Netscape automatically appends each user's name with "@mach-networks.net" when your users set up their accounts. The domain name field also determines default domain values in the instructions that appear on the Identity screen of the Account Wizard, which leads users through the process of setting up their mail accounts.
- **Display name.** The mail account name that you want to appear as the Mail Folder in the left frame of the main Netscape Mail screen. For example, "Mach Networks Mail".
- **Mail provider.** The mail provider name that you want to appear in the New Account Setup screen, where users are prompted to select the type of account that they would like to set up, such as a newsgroup, email, or Webmail. This screen includes a variety of options; choices include AOL and Netscape accounts, so the more specific you make this text, the more helpful to your customer. For example, to be consistent with other choices on this account setup list, you might specify a name such as "Mach Networks Mail Account".

Incoming Server Settings

The CCK tool allows you to specify default settings for the incoming mail server. These settings appear in the Server Settings section of each new mail account listed under Mail & Newsgroups Account Settings. To view these settings in Netscape:

1. In the Netscape Mail & Newsgroups window, open the Edit menu and choose Mail & Newsgroups Account Settings.
2. Click Server Settings.

These are the default Server Settings that you can specify with the CCK tool:

- **Server name.** The name of the incoming server. For example:
`mail.mach-networks.net`
- **Port number.** The port for the incoming server. For POP, the standard port number is 110; this value is pre-filled in the CCK tool; you can change it if desired.

- **Server type.** Choose POP or IMAP. If you choose POP, you can also choose to leave messages on the server even after the user deletes them in the Netscape Mail program.

Outgoing Server Setting

The CCK tool allows you to specify the default outgoing mail server. This setting appears in the Outgoing Server (SMTP) section under Mail & Newsgroups Account Settings.

To view the Outgoing Server (SMTP) panel:

1. In the Netscape Mail & Newsgroups window, open the Edit menu and choose Mail & Newsgroups Account Settings.
2. Click Outgoing Server (SMTP).

You specify only the Outgoing Server name with the CCK tool:

- **Server name.** The name of the outgoing SMTP server, for example, `smtp.mach-networks.net`.

Specifying News Domain and Server Settings

Domain

The CCK tool allows you to specify the following News domain information:

- **Domain name.** Enter the default News domain that you want to appear in the Netscape newsgroup account settings. Note that this domain name must be different than the domain name you used for Mail. For example, if your mail domain is "mach-networks.net," a news domain of "mach-networks.news.net" would work, but "mach-networks.net" would not.

The domain name field also determines default domain values in the instructions that appear on the Identity screen of the Account Wizard, which leads users through the process of setting up their news accounts.

- **Display name.** The News account name that you want to appear near the bottom of the left frame of the main Netscape Mail screen. For example, "Mach Networks News".

- **Mail provider.** The News provider name that you want to appear in the New Account Setup screen, where users are prompted to select the type of account that they would like to set up, such as a newsgroup, email, or Webmail. This screen includes a variety of options; choices include AOL and Netscape accounts, so the more specific you make this text, the more helpful to your customers. For example, to be consistent with other choices on this account setup list, you might enter a string such as "Mach Networks News Account".

News Server (NNTP)

The CCK tool allows you to specify the following News server information:

- **Server name.** The name of the News server. For example:
`mach-networks.news.net`
- **Port number.** The port for the News server. The standard port number is 119.

Netscape Activation Considerations for Mail and News

By default, when Netscape launches a new profile, it displays the Netscape Activation screen. Users who choose to accept activation are then prompted to register for Webmail and other Netscape services.

If you customize Mail or Newsgroups, you should disable Netscape activation. If you don't disable activation and your customer chooses to activate Netscape Webmail, then the initial Account Setup screens will prompt the customer to complete Webmail account setup rather than your customized account setup.

To set up your mail account at this point, your customer must open the Edit menu, choose Mail & Newsgroup Account Settings, click on the New Account button, and then select your customized account option. After completing the customized account setup, the customer must click Set as Default button to make the new account the default mail account.

To avoid forcing your customers through this procedure, you should either tell them to cancel Netscape activation when they first launch Netscape, or turn off activation yourself in the installers you distribute.

Turning off Netscape activation involves manual customization of the installer files produced by the CCK tool. For detailed instructions, see Chapter 12, "Advanced Netscape Customizations (page 121).

Checklists for Customizing Mail and News

Customize Netscape Mail

The screen “Customize Netscape Mail” specifies this information:

- Domain
 - Domain name
 - Display name
 - Mail provider

- Incoming Server
 - Server name
 - Port number
 - Server type
 - POP (with option to messages on the server)
 - IMAP

- Outgoing Server (SMTP)
 - Server name

Customize Netscape News

The screen “Customize Netscape News” specifies this information:

- Domain
 - Domain name
 - Display name
 - News provider

- **News Server**
 - **Server name**
 - **Port number**

Preparing to Customize Proxy Configurations

The CCK tool includes a screen, *Customize Proxy Configurations*, that specifies the same settings available in the *Advanced/Proxies* section of the Netscape 7.0 Preferences dialog box.

This chapter contains these sections:

- About Proxy Configurations
- Default Network Proxy Configurations

About Proxy Configurations

Many organizations block access from the Internet to their networks. This prevents outside parties from gaining access to sensitive information. The protection is called a firewall.

If your organization has a firewall, the browser may need to go through a proxy server before connecting your users to the Internet. The proxy server prevents outsiders from breaking into your organization's private network.

Default Network Proxy Configurations

The CCK tool allows you to choose among the proxy configuration options listed below. They are identical to the options available in the Advanced/Proxies section of the Netscape 7.0 Preferences dialog box. To see this section:

1. Open the Edit menu and choose Preferences.
2. Click the Advanced category. If no subcategories are visible, double-click the category to expand the list.
3. Click Proxies.

These are the default options for the Proxies preferences panel that you can set in the CCK tool:

- **Direct connection to the Internet.** Choose this option if your users don't have to go through a proxy.
- **Manual proxy configuration.** Choose this option if your users don't have a proxy configuration file. Type the name or numeric IP address of the proxy server for HTTP and FTP. Type each proxy server's port number in the Port field.

In the “No Proxy for:” field, type the names of any domains that your users can connect to directly, bypassing the proxy. For example, if you type `netscape.com`, then the proxy is bypassed each time your users view a web page from `netscape.com`.

Domain names are the part of a URL that contains the name of an organization, business, or school—such as `netscape.com` or `washington.org`. If you use local host names without the domain name, list them the same way. Use commas to separate multiple host names. The wildcard character [`*`] cannot be used.

- **Automatic proxy configuration URL.** Choose this option if you have a proxy configuration file.

Preparing to Customize the CD Autorun Screen

The CCK tool screen called *Customize the CD Autorun Screen* specifies background image and text customizations for the CD autorun screen, which appears automatically when users insert your customized Netscape CD into a CD-ROM drive.

This chapter describes the information and files you need to prepare if you want to customize the CD autorun screen. It includes these sections:

What Is the CD Autorun Screen?

Customizing the CD Autorun Screen's Background Image

Customizing Text for the CD Autorun Screen

Customizing the Installation Document

Checklist for Customize the CD Autorun Screen

What Is the CD Autorun Screen?

If you plan to create Netscape installers for CD distribution, you can provide a CD autorun screen that automatically appears when the user inserts your customized Netscape CD into a CD-ROM drive.

The CD autorun screen makes it easy for your users to install Netscape or to read installation instructions before they begin the installation process.

About the Default CD Autorun Screen

The CCK tool provides a default CD autorun screen that's ready to use:



Customizing the Standard CD Autorun Screen

Customizing the standard CD autorun screen is optional. If you wish, you can use the CCK tool to customize the following items in the standard CD autorun screen:

- The background image that appears in the CD autorun screen
- The text inside and below the screen's title bar
- The contents of the installation text file (`install.txt`)

Here is an example of a CD autorun screen that was customized by the CCK tool:



After you create your CD-based installer using the CCK tool, you can make additional manual customizations to the CD autorun screen, such as adding new screens or buttons. For more information, see Chapter 11, “Manually Customizing the CD Autorun Screen.” (page 101).

Customizing the CD Autorun Screen's Background Image

You can customize the CD autorun screen's background image if you want to add your company logo or add other images that promote your company's identity.

The standard background image for the CD autorun screen consists of a 640 pixel by 480 pixel bitmap (.BMP) file, as illustrated here:



The easiest way to customize the background image is to edit the existing background image, called `install.bmp`, as described in the next section. If you prefer, you can substitute your own custom file as described under “Creating Your Own Custom Background Image” (page 87).

Editing the Standard Background Image

To edit the standard background image:

1. Locate the standard background bitmap file:

```
installation_directory\CCKTool\Configs\my_config\Workspace\Autorun\Shell\bmps\install.bmp
```

where *installation_directory* is the directory where you installed the CCK tool and *my_config* is the name of the configuration you are customizing.

2. Using a graphics editing program, open the `install.bmp` file and make your changes to it. For example, you might want to add your company's logo and name.

Note: Do not add text or graphics within the black border area at the bottom of the CD autorun screen. This area is reserved for the CD autorun screen's Browse CD, Back, and Exit buttons.

3. Save your changes, making sure to save the file in `.BMP` format. If you want, you can save the file using another name.

In the CCK tool, go to the screen titled "Customize the CD Autorun Screen."

4. Under Background Bitmap, click Choose File and browse to the location of your custom background image to include it.

Creating Your Own Custom Background Image

To create your own custom background image for the CD autorun screen:

1. Using a graphics editing program, create a bitmap image that's 640 pixels wide and 480 pixels high.

Keep the size of the file as small as possible (325 Kbytes or less) by reducing the number of colors in the file, or by removing or flattening the layers (if you created the image in Photoshop). If your file size is too large, it may not appear in the CD autorun screen.

2. At the bottom of the background image, create a rectangular border at least 40 pixels high and 640 pixels wide. The CD autorun screen will use this area to display the CD control buttons (Browse CD, Back, and Exit).
3. Save the image as a `.BMP` (bitmap) format file here:

```
installation_directory\CCKTool\Configs\my_config\Workspace\Autorun\Shell\bmps\install.bmp
```

where *installation_directory* is the directory where you installed the CCK tool and *my_config* is the name of the configuration you are customizing.

Your background bitmap image is now ready to specify when you run the CCK tool.

Customizing Text for the CD Autorun Screen

The CCK tool's CD autorun screen specifies two text strings for the CD Autorun Screen:

- **Title bar text.** Text that appears in the CD autorun screen's title bar after "Netscape by". For example, if you enter "Mach Networks" the title bar text will read "Netscape by Mach Networks".
- **Text below title bar.** Text that appears just below the title bar. For example: "Welcome to the Mach Networks Installer for Netscape 7.0."

You should decide on the exact wording of these strings before you run the CCK tool.

Customizing the Installation Document

The CD autorun screen includes a button that, when clicked, opens a text document that contains instructions for installing Netscape. You might want to include additional information in this document that you want your users to know before they install.

For example, you could add information on your products and services, and tell users how they can contact you for more information. If you're planning to include installers for additional programs as part of your Netscape installer, this document is a great place to tell your users about the additional programs you're providing.

To edit the installation document:

1. Locate the standard installation document:

```
installation_directory\CCKTool\Configs\Default\Workspace\Autorun\install.txt
```

2. Make a copy of this file and save here:

```
installation_directory\CCKTool\Configs\my_config\Workspace\Autorun\install.txt
```

Open the `install.txt` document using a standard text editor, such as WordPad.

3. Edit the `install.txt` document and save your changes.

Your background bitmap image is now ready to specify when you run the CCK tool.

Checklist for Customize the CD Autorun Screen

The Customize the CD autorun screen specifies the following:

- **Background bitmap image** (stored as `Workspace\Autorun\Shell\bmps\install.bmp`)
- **Title bar text**
 - text that appears after “Netscape by” in the title bar
 - text displayed just below the title bar
- **Custom installation text file** (stored as `Workspace\Autorun\install.txt`)

Checklist for Customize the CD Autorun Screen

Preparing to Create the Installer

The final screen presented by the CCK tool, called Create the Installer, allows you to specify which Netscape components you want your installer to install. You can also use this screen to specify up to two additional installers to include with your customized Netscape installation package.

This chapter describes the Netscape components you can choose from and the requirements for additional installers you may wish to create.

This chapter contains these sections:

- Selecting Netscape Components
- Providing Additional Installers

Selecting Netscape Components

Table 9-1 lists the optional components that you can include (or exclude) for your customized Netscape installer. Note that Mac OS components are pre-set; CCK doesn't enable you to change the components included for Macintosh systems.

Netscape Navigator is always installed. If you choose not to include any additional components, your Netscape installer will install Netscape Navigator only.

Table 9-1 Optional components you can include in your Netscape installer

Component	Description	Windows	Linux	Macintosh (Not editable)
Sun Java 2	Enables Java in Netscape	Yes	Yes	Yes
Mail & Instant Messaging	Email and newsgroup software and Instant Messenger services	Yes	Yes	Yes
Quality Feedback Agent	Tool for providing feedback to Netscape	Yes	Yes	Yes
Spell Checker	For use with Mail & News and Composer	Yes	Yes	Yes
AOL ART Extensions	AOL ART image format support	Yes	No	Yes
Net2Phone	Internet phone dialer	Yes	No	No
Macromedia Flash Player	Plug-in to view Macromedia Flash-enabled web pages	Yes	Yes	Yes
AOL On Desktop	AOL subscription offering	Yes	No	No
RealPlayer 8	Plug-in for playing music and video	Yes	No	Yes
Viewpoint Media Player		Yes	No	No
Winamp	Winamp media player	Yes	No	No
HP Printer Identifier Plug-in	Plug-in for HP Printer support	Yes	No	No
Classic skin	Support for Netscape Classic theme	Yes	Yes	No
Canadian region pack				

Providing Additional Installers

You can include installers for up to two additional products in your Netscape installer. When the user installs the recommended Netscape configuration, the additional installers are automatically installed after the main Netscape installation completes. However, if the user chooses the Custom path when installing Netscape, the user can choose not to install the additional components.

Each installer must consist of a single, self-extracting executable (.exe) file, such as those created by installation creation programs such as InstallShield from InstallShield Software Corporation. Before you run the CCK tool, place your installers here for convenience:

```
installation_directory\CCKTool\Configs\my_config\Workspace\CustInst\
```

You specify a path to the additional installers in the last screen presented by the CCK tool: "Create the Installer."

Important: When you specify the size in kilobytes of each installer, Netscape recommends that you enter a number approximately three times the size of the actual installer .exe file, to ensure that the installer has enough room to expand and install the program on the user's hard disk.

Verifying Your CCK Tool Customizations

After you run the CCK tool, you should install your customized version of Netscape 7.0 and verify that your customizations have taken effect correctly. If you want to make any adjustments, you can run the CCK tool again and produce a modified installer in the same output directory.

Important: Verify and finalize your CCK tool customizations before you make any manual customizations. If you have to run the CCK tool again after making manual customizations to your installation files, the tool will erase all your manual customizations.

This chapter contains these sections:

- Installing Your Customized Build
- Verifying Your Browser Customizations
- Verifying Your Mail and News Customizations
- Verifying Your Installer Customizations

Installing Your Customized Build

After the CCK tool has generated your custom installer, follow these steps to install your customized build:

1. On Windows, open the directory

`installation_directory\CCKTool\Configs\Output\my_config\`

and double-click the file `setup.exe`.

On Linux, transfer the tar file from

`CCKTool\Configs\my_config\output`

to a Linux system, extract the contents, and change the permission of the file `netscape-installer-bin` to include executable permission. You can then run the install script by typing `./netscape-installer`.

2. If you decided to include a CD autorun screen with your installer, verify that it appears and that it reflects any customizations you made with the CCK tool.
3. If you have a preexisting profile installed, create a new profile for testing purposes. To do so, click Manage Profiles when the Profile Manager appears, then click Create Profile.

You must test with a new, unmodified profile to verify that your customizations have taken effect.

Verifying Your Browser Customizations

While running a new, unmodified Netscape profile, verify the following:

- The Windows Start menu includes your customizations to the Netscape Program Folder.
- The Help menu includes the menu item that you specified and the new menu item points to the URL you specified.
- The Bookmarks menu and Personal Toolbar include your customizations.
- The Navigator browser's home page and Home button are set to the URL you specified.
- Your customized title bar text appears in the browser window's title bar.

- Your customized animated logo (static and animated versions) appears in place of the Netscape logo, and clicking the animated logo button brings you to the URL you specified.
- Changes you made to the sidebar appear when you first launch Netscape.
- Changes you made to your proxy settings.

Verifying Your Mail and News Customizations

While running a new, unmodified Netscape profile, follow these steps to verify your Mail & Newsgroups customizations:

1. Open the Window menu and choose Mail & Newsgroups.

The first New Account Setup screen appears. Verify that the Mail and Newsgroup provider name that you specified with the CCK Tool show up correctly.

2. Select your customized mail account and click Next.

The second New Account Setup screen appears. Verify that the domain name you specified for the mail account shows up correctly.

3. Click Finish.

Verify that the display name you specified for new mail accounts shows up correctly.

4. Open the Edit menu and choose Mail & Newsgroups Account Settings.

Click the name of the new mail account and examine the settings, then do the same for Server and Outgoing Server. Verify that the domain name, display name, account name, and server settings that you specified with the CCK tool all show up correctly.

5. Click New Account and follow steps 1 through 4, except this time set up a new newsgroup account and checking the corresponding customizations.

Verifying Your Installer Customizations

While running any Netscape profile, verify that only the components you selected in the final screen of the CCK tool are available. At a minimum, you should perform the checks described here as appropriate for each platform. See Table 9-1 (page 92) for details on platform support for each component.

Verify the presence of the optional components you selected as follows:

Table 10-1

Component	Verification
Sun Java 2	<p>On Windows, open the Start menu, choose Settings, then Control Panel. Double-click Add/Remove Programs. You should see an entry for Java 2 (jre1.4.1) if it is installed.</p> <p>Alternatively, in Netscape 7.0, open the Help menu and choose About Plug-ins. You should see Java plug-ins listed there.</p>
Mail	Open the Window menu and choose Mail & News. If you are running a profile for the first time, the Account Wizard should launch and guide you through the steps involved in setting up a new account.
Netscape Instant Messenger	Open the Window menu and choose Instant Messenger. If you are running a profile for the first time, you should be guided through the steps involved in setting up an IM account.
Quality Feedback Agent	If you left this option selected, you may discover during verification that it's not present. This is because the agent will be installed only 20% of the time when it has been selected on the final CCK screen. This is done deliberately to reduce the download size for 80% of installers, while still providing Netscape with statistically significant feedback.
Spell Checker	Open the Window menu, choose Composer, and enter some lines of text. Then open the Edit menu and choose Check Spelling. The spell checker should appear.
AOL ART Extensions	Open the directory in which Netscape 7.0 was installed, then open the Components directory. If the file <code>nsart.dll</code> is present, AOL ART extensions are installed.
Net2Phone	Confirm that desktop icon is present.
Macromedia Flash Player	Choose About Plug-ins from the Help menu and confirm that the Flash plug-in is present.

Table 10-1

Component	Verification
RealPlayer 8	Choose About Plug-ins from the Help menu and confirm that the RealPlayer plug-in is present.
Winamp	<p data-bbox="672 348 1286 435">Open the Start menu, choose Settings, then Control Panel. Double-click Add/Remove Programs. You should see an entry for Winamp if it is installed.</p> <p data-bbox="672 453 1319 513">In addition, when Winamp is installed, its icon appears on the desktop</p>
HP Printer Identifier Plug-in	Open the Help menu, choose About Plug-ins, and confirm that the HP Peripheral Interrogator plug-in is present.
Classic skin	Open the View menu, choose Apply Themes, and confirm that the Classic theme appears in the submenu.

Manually Customizing the CD Autorun Screen

The CD autorun screen automatically appears when a user inserts a customized Netscape CD into a CD-ROM drive. The standard CD autorun screen lets your users easily install Netscape or read installation instructions before they begin installation. You can customize some aspects of this screen, such as the title bar text and background, using the CCK tool.

If you're planning to distribute a Netscape installer on a CD, you might want to make more customizations to the standard CD autorun screen than the CCK tool can implement. This chapter describes the manual customizations to the CD autorun screen that you can make, if you wish, to the installation files generated by the CCK tool.

This chapter contains these sections:

Why Manually Customize the Standard CD Autorun Screen?

Run The CCK Tool First

About the CD Autorun Files

Tools for Customizing the Standard Autorun Screen

Creating a CD Staging Area on Your Hard Disk

Understanding the rshell.ini File

Editing the rshell.ini File

Verifying Your CD Autorun Screen Manual Customizations

Why Manually Customize the Standard CD Autorun Screen?

Chapter 8, “Preparing to Customize the CD Autorun Screen” (page 83), describes the following customizations that you can make to the standard CD autorun screen using the CCK tool:

- Customize the CD autorun screen’s background bitmap image.
- Provide your own title bar text and text below the title bar.
- Customize the contents of the installation guide text file.

You can manually customize the standard CD autorun screen if you want to:

- Create additional screens that inform users about your products, services, and promotions.
- Include additional files or software on the CD. You can add new screens and buttons to the CD autorun screen that give users easy access to the directories on the CD that contain these files, so that users don’t have to browse through the directories on the CD to find them. You can also include a button in the CD autorun screen that opens a `readme.txt` file, so users have easy access to information about these additional files. (For information about adding up to two additional installers with the CCK tool, see Chapter 9, “Preparing to Create the Installer” (page 91).
- Installers for additional applications on the CD. You can add buttons and text to the standard CD autorun screen that inform users about these applications and make them convenient to install.

Run The CCK Tool First

Before manually customizing the standard CD autorun screen, use the CCK tool to create a Netscape installer that includes the CD autorun screen. Make sure you select the checkbox labeled “Include CD autorun screen” on the Gathering Information screen. Checking this box causes CCK to include the files associated with the CD autorun screen when it creates your customized Netscape installer. After the CCK tool builds the installer, verify that the CD autorun customizations are correct.

About the CD Autorun Files

The CD autorun screen is a standard Windows executable program that automatically launches when users insert the CD in a CD-ROM drive.

When you create your customized Netscape installer, the CCK tool places the CD Autorun files in this location:

```
installation_directory\CCKTool\Configs\my_config\Output
```

When you are finished editing the CD autorun screen files, you use the contents of the `Output` directory to create your CD layout.

These files and directories are associated with the CD autorun screen:

- The `Nsetup32.exe` program (the Autorun program) and the `rshell.ini` file are both located in the directory `Output\Shell\Nsetup32\`. The `rshell.ini` file contains all of the custom settings and flags that control the appearance and function of the CD autorun screen.
- `setup.exe`, `launch.ini`, and `autorun.inf` are located in the `Output` directory, which is the root of the CD layout. They control the automatic launch of the Autorun program and the CD autorun screen. The `launch.ini` file points to the location of the `Nsetup32.exe` autorun program and its associated file, `rshell.ini`. If the Autorun screen doesn't automatically launch, users can double-click the `setup.exe` file.

In addition to controlling the appearance of the CD autorun screen, the `rshell.ini` file also links any number of CD autorun screens together using buttons. The buttons can also point to any installers or files included on your CD that you want users to be able to access.

For more information about preparing your CD layout, see Chapter 14, “Distributing Your Installers” (page 135).

Tools for Customizing the Standard Autorun Screen

To customize the standard autorun screen or add new screens, you'll need:

- A standard text editor for editing the `rshell.ini` file.
- A graphics editing program, for creating any custom bitmap images that you want to include as background or button images in the Autorun screens.

You can include one or more directories inside the shell directory to store the custom bitmap images used by the autorun screens. Depending on the CD layout you want to create, you can also include directories for additional items such as applications that you want users to be able to install by clicking buttons in the CD autorun screen.

Creating a CD Staging Area on Your Hard Disk

Before you start editing the `rshell.ini` file, you'll need to determine the directory structure on the CD so that you know how to specify the pathnames of files that you want to be accessible through the Autorun screens. You do this by creating a staging area on your hard disk that exactly represents the final CD layout you intend to use.

To create a CD staging area:

1. Create a directory called `Staging` on your hard disk.
2. Locate the `Output` directory you created using the CCK tool.
3. Copy the contents of the `Output` directory into the `Staging` directory.
4. Inside the `Staging` directory, create a directory for each additional component that you want to include on the CD.

Inside the `Staging\Shell` directory, you'll find a directory called `bmps` in which you'll store the custom background bitmap images for any new CD autorun screens you create.

Understanding the `rshell.ini` File

Note: The `rshell.ini` file does not support the usage of double-byte character sets such as those used in the Chinese, Japanese, and Korean languages.

To understand the structure of the `rshell.ini` file, use a standard text editor such as NotePad to open `Shell\Nsetup32\rshell.ini`, and examine the descriptions contained in the file.

The `rshell.ini` file consists of two sections:

- The `[General]` section is where you specify the attributes of the control buttons (Browse CD, Back, and Exit) that appear at the bottom of the Autorun screens.

- The [Dialog] sections specify the attributes and behavior of each Autorun screen. Each [Dialog] section defines one Autorun screen, and you name the [Dialog] sections sequentially as [Dialog1], [Dialog2], [Dialog3], and so on, one for each Autorun screen.

General Settings in the rshell.ini File

This section describes the general settings in the `rshell.ini` file that apply to all dialogs.

Text for Browse, Back, and Exit Buttons

```
browse_button_text=text
```

```
back_button_text=text
```

```
exit_button_text=text
```

Specify the text displayed for the Browse, Back and Exit buttons. The Browse and Exit buttons appear on all dialogs. The Back button only appears if the `rshell.ini` file specifies more than one dialog.

Use an `&` (ampersand) in front of the character you want to assign as the keyboard shortcut for this button. For example, `browse_button_text=Browse &CD` sets `C` as the keyboard shortcut for this button.

Default Values

```
browse_button_text=Browse &CD
```

```
back_button_text=Back
```

```
exit_button_text=Exit
```

Positions of Browse, Back, and Exit Buttons

```
browse_button_pos= x1,y1,x2,y2
```

```
back_button_pos= x1,y1,x2,y2
```

```
exit_button_pos= x1,y1,x2,y2
```

Specifies the position of the Browse, Back, and Exit buttons, relative to the top left corner (0,0) of the dialog. If not specified, button position is based on dialog size.

Values

x1,y1: The upper left coordinates of the button, in pixels, relative to the top left corner of the dialog.

x2,y2: The lower right coordinates of the button, in pixels, relative to the top left corner of the dialog. These coordinates are ignored if button bitmap files are specified using the `browse_button_bitmaps`, `back_button_bitmaps`, or `exit_button_bitmaps` setting.

Bitmaps for the Browse, Back, and Exit Buttons

```
browse_button_bitmaps=up.bmp,dn.bmp,sel.bmp,dis.bmp
```

```
back_button_bitmaps=up.bmp,dn.bmp,sel.bmp,dis.bmp
```

```
exit_button_bitmaps=up.bmp,dn.bmp,sel.bmp,dis.bmp
```

Specifies the button bitmaps used for the Browse, Back, and Exit buttons. Four bitmaps specify the four possible states of the button: up, down, selected, disabled. This setting is optional. If you don't specify bitmaps for a button, the dialog uses a standard Windows button with the text specified in `browse_button_text`, `back_button_text`, or `exit_button_text`.

Values

`up.bmp`: Specifies the bitmap associated with the up (unpressed) button state.

`dn.bmp`: Specifies the bitmap associated with the down (pressed) button state.

`sel.bmp` (optional): Specifies the bitmap associated with the selected (mouse-over) button state.

`dis.bmp` (optional): Specifies the bitmap associated with the disabled button state.

Dialog Settings

This section describes the global settings that apply within a dialog.

Caption Text

```
caption=caption text
```

Specifies the text that appears in the dialog's title bar.

Dialog Position

```
dialog_position=x1,y1,x2,y2
```

Specifies the position of the dialog on the monitor screen. If not specified, the dialog is displayed at the center of the monitor screen. If `bk_bitmap` is specified, `x2,y2` is ignored.

Values

`x1,y1`: Specifies the coordinates, in pixels, relative to the top left corner (0,0) of the dialog.

`x2,y2`: Specifies the coordinates, in pixels, of the lower-right corner of the dialog.

Background Bitmap

```
bk_bitmap=background.bmp
```

Specifies the background bitmap file used for the dialog. If a background bitmap file is not specified, the dialog uses the system background color for its background color.

Button Gap

```
button_gap=y
```

Specifies the vertical gap (`y`), in pixels, between the buttons in the dialog.

Global Text Settings

This section describes the settings used for the title text in a dialog. You use these settings to include a line or paragraph of text that can appear anywhere within the dialog.

Dialog Title Text

```
dialog_title_text=text
```

Specifies the title text for the dialog.

Dialog Title Position

```
dialog_title_pos=x1,y1,x2,y2
```

Specifies the position in pixels, relative to the top left corner of the dialog, of the title text.

Values

x1,y1: Specifies the position of the top left corner of the text.

x2,y2: Specifies the position of the bottom right corner of the text.

Dialog Title Text Color

`dialog_title_text_color=red,green,blue`

`dialog_title_shadow_color=red,green,blue`

`dialog_title_shadow_depth=red,green,blue`

Specifies the text color, shadow color, and shadow depth of the dialog title text. You specify a number between 0 (black) and 255 (white) for each of the red, green, and blue values to get the overall pixel color.

Table 1 lists commonly-used colors from the standard Windows palette.

Table 11-1 Windows palette colors

Color	Red,Green,Blue values
Black	0,0,0
White	255,255,255
Red	255,0,0
Green	0,255,0
Blue	0,0,255
Yellow	255,255,0
Magenta	255,0,255
Cyan	0,255,255
Dark red	128,0,0
Dark green	0,128,0
Dark blue	0,0,128
Dark cyan	0,128,128
Dark gray	128,128,128
Dark magenta	128,0,128
Gray	192,192,192

Dialog Title Text Font

```
dialog_title_text_font=font,size
```

Specifies the font and font size used for the dialog's title text. It's best to use a standard font that you know will be available on end users' machines. If not specified, the system font and font size are used.

Dialog Title Text Style

```
dialog_title_font_bold=TRUE/FALSE
```

```
dialog_title_font_underline=TRUE/FALSE
```

```
dialog_title_font_italic=TRUE/FALSE
```

If set to `TRUE`, specifies the font style (bold, italic, underline) used for the dialog's title text. If not specified or if set to `FALSE`, the style is not applied.

Global Button Text Settings

This section describes the text settings used for all button text in a dialog.

Text Colors

```
text_color_default=red,green,blue
```

```
text_color_highlight=red,green,blue
```

Specifies the default text color and the mouse-over (highlight) text color of all button text in a dialog. You specify a number between 0 (black) and 255 (white) for each of the red, green, and blue values to get the overall pixel color. The text automatically changes to the mouse-over (highlight) text color when you position the mouse over a button in the dialog.

Table 11-1 lists commonly used colors from the standard Windows palette.

Button Title and Body Text

```
button_title_text_font=font,size
```

```
body_text_font=font,size
```

Specifies the font and size used for the dialog's button title text and button body text. It's best to use a standard font that you know will be available on end users' machines. If not specified, the system font and font size are used.

Button Title Font

```
button_title_font_bold=TRUE/FALSE  
button_title_font_italic=TRUE/FALSE  
button_title_font_underline=TRUE/FALSE
```

If set to `TRUE`, specifies the font style (bold, italic, underline) used for the dialog's button title text. If not specified or if set to `FALSE`, the style is not applied.

Button Body Text Style

```
body_text_font_bold=TRUE/FALSE  
body_text_font_italic=TRUE/FALSE  
body_text_font_underline=TRUE/FALSE
```

Specifies the font style (bold, italic, underline) used for the dialog's button body text. If not specified or set to `FALSE`, the style is not applied.

Column Settings Within a Dialog

This section describes the settings used for columns within a dialog. Each dialog can have one or more columns. The settings for the first (left-most) column all begin with `col1`; the settings for the second column all begin with `col2`, etc. If you only want one column of buttons in a dialog, delete all of the `col2` and greater settings, or you can leave them blank.

Position of First Button in Column One

```
col1_button_pos=x,y
```

Specifies the position of the first button in column 1 of a dialog. You specify the `x,y` coordinates of the upper-left corner of the button, relative to the upper-left corner of the dialog (0,0). If you want, you can specify an offset position for an individual button using the `button1_offset` setting described later in this chapter.

Position of a Button's Descriptive Text

```
col1_text_offset=offset  
col1_text_posx=x
```

You can use either of these settings to specify the position of the button's descriptive text. Use `coll_text_offset` if you want to specify the text's position by defining an offset between the button and the button text. Use `coll_text_posx` instead if you want to specify the absolute *x* position of the button's descriptive text.

If unspecified, the default is `coll_text_offset=10`. If both settings are specified, `coll_text_offset` is ignored and the absolute *x* position as specified in `coll_text_posx` is used.

Column Text Width

```
coll_text_width=x
```

Specifies the distance *x*, relative to the left edge of the dialog box, at which the button descriptive text wordwraps to the next line. If this setting is not specified, the text wordwraps when it is 10 pixels to the left of the right edge of the dialog.

Button Settings Within a Dialog

This section describes the settings used for buttons within a dialog. Each dialog can have one or more buttons. The settings for the first button all begin with `button1`, the settings for the second button all begin with `button2`, and so on. If you only want one button in a dialog, delete all of the `button2` and greater settings, or leave them blank.

Button Bitmaps

```
button1_bitmaps= up.bmp,dn.bmp,sel.bmp,dis.bmp
```

Specifies the button bitmaps used for `button1`. Four bitmaps specify the four possible states of the button: up, down, selected, disabled. This setting is optional. If you don't specify bitmaps for a button, the dialog uses a standard Windows button with the text specified in `button1_text_title`.

Values

`up.bmp`: Specifies the bitmap associated with the up (unpressed) button state.

`dn.bmp`: Specifies the bitmap associated with the down (pressed) button state.

`sel.bmp` (optional): Specifies the bitmap associated with the selected (mouse-over) button state.

`dis.bmp` (optional): Specifies the bitmap associated with the disabled button state.

Button Action

`button1_cmdline=action,target`

Specifies the action you want to assign to the button. Clicking a button can cause one of seven possible actions, depending on the value you specify for the action argument. The possible button actions and arguments are:

- **Launch a program** (`action=exe`)

`button1_cmdline=exe,path to executable file`

Example: `button1_cmdline=exe,..\.\.Netscape\setup.exe`

- **Go to a different dialog screen** (`action=window`)

`button1_cmdline=window,dialog#`

Example: `button1_cmdline=window,dialog2`

- **Open a file** (`action=open`)

`button1_cmdline=open, path to file`

The file opens with whatever program the operating system has associated with the file's type. If a file type association doesn't exist, Windows asks the user to choose a program.

Example: `button1_cmdline=open,..\.\.install.txt`

- **Print a file** (`action=print`)

`button1_cmdline=print, path to file`

The file is printed with whatever program the operating system has associated with the file's type. If a file type association doesn't exist, Windows asks the user to choose a program.

Note: You cannot print HTML files through Windows.

Example: `button1_cmdline=print,..\.\.install.txt`

- **Explore a directory on the CD** (`action=explore`)

`button1_cmdline=explore,directorypath`

Opens the specified directory on the CD. The directory path must be specified as an absolute path from the root of the CD.

Example: `button1_cmdline=explore,extras\clipart` opens the `extras\clipart` directory, which is at the root level of the CD.

- **Open a file in Netscape Navigator** (`action=netscape`)


```
button1_cmdline=netscape, path to file
```

Opens the specified file using the currently-installed version of Netscape Navigator. The file type can be .html, .gif, .jpeg, or any other file type that the browser can open, such as .pdf (if the correct plug-in is already installed).

Example: `button1_cmdline=netscape,myfile.html`

- Create a shortcut on the desktop (action=desktop)

```
button1_cmdline=desktop, file or directory name, shortcut name,
path to icon file
```

When button1 is clicked, a shortcut is created on the desktop, using the specified shortcut name and icon file, that opens the specified file or directory on the CD. File or directory paths must be specified as absolute paths from the root of the CD.

Example: `button1_cmdline=desktop,readme.txt,ReadMe,\shell\icons\readme.ico`

Button Text

```
button1_text_title=text
```

```
button1_text_body=text
```

Specifies the button title text and body text for button1.

Button Offset

```
button1_offset=x,y
```

Specifies the button's horizontal (x) and vertical (y) offset, in pixels, from the location specified in the `col1_button_pos` setting. If there is more than one button in column 1, and you only specify an offset for button1, the other buttons in the same column will use the same vertical (y) offset. You can change the offsets for the other buttons by specifying individual button offsets for each of them.

Editing the rshell.ini File

To edit the rshell.ini file:

1. Locate the `Staging\Shell\nsetup32\rshell.ini` file and open it using a standard text editor. Familiarize yourself with the settings in the `rshell.ini` file.

2. Decide how many dialog screens you want to use. If you need more dialog screens than are defined in the `rshell.ini` file, copy an entire `[Dialogx]` section (where `x` is a unique number associated with each dialog) and paste it as needed into the file. Each dialog screen must have a unique number. If you need fewer than are provided by default, remove entire `[Dialogx]` sections as necessary.
3. Design the layout, background images, buttons, and text for each dialog screen. Make the necessary customizations in the settings in the `rshell.ini` file.

Note: Rather than entering the text for a screen in the `rshell.ini` file, you may prefer to create your text as part of the background image using an image editing program such as Adobe Photoshop. Using an image editing program gives you more control over the appearance of the text, including fonts and colors.

4. Assign an action to each button in each dialog screen.
5. Save your changes to the `rshell.ini` file in place; do not move the file.

Adding a New Screen

The supplied `rshell.ini` file includes a second dialog, `Dialog2`, that is not visible by default. To enable it, locate the `button3` settings that are commented out with semicolons (located within the section in the `rshell.ini` file called "Buttons 2 - 6 for Dialog 1"). Remove the semicolons in front of all the `button3` settings, save your changes, and then launch the Autorun screen by double-clicking the file `Shell\nsetup32\nsetup32.exe` file. Click the third button in the first screen (labeled Bonus Applications and Plug-ins) and you'll be able to see the second dialog.

To add a new Autorun screen:

1. Locate the file `Staging\Shell\nsetup32\rshell.ini` file and open it using a text editor.
2. Copy an entire `[Dialogx]` section and paste it into the `rshell.ini` file at the location where you want the new screen to appear.
3. Increment the value of `x` in the `[Dialogx]` identifier, so that the `[Dialogx]` section has a unique number. Each `[Dialogx]` section must have a unique number associated with it, such as `[Dialogx]`, `[Dialogx]`, `[Dialogx]`.
4. Make the necessary customizations to each `[Dialogx]` section.
5. Save your changes to the `rshell.ini` file in place; do not move the file.

Adding a Background Image to a Dialog Screen

If you don't specify a background image for a new screen, the new screen uses the system background color. To add a background image to a new screen, follow these steps:

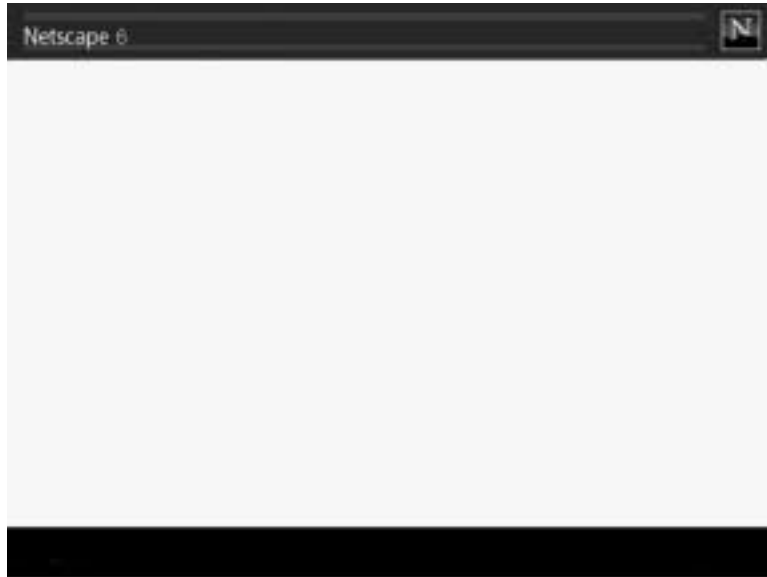
1. Using a graphic editing program, create a background bitmap that's 640 x 480 pixels, and save it as a .BMP format file in the `shell\bmps\` directory.

Keep the following in mind:

- o Keep your bitmap file sizes as small as possible by reducing the number of colors the images use or by removing (flattening) the layers if you created the images in Adobe Photoshop. If your images are too large, you may not be able to see them in the Autorun screen. If you cannot see a background image when you test the Autorun screen, open the image in a paint program and try reducing the number of colors to reduce the image's file size.
- o To prevent palette-swapping when switching between Autorun screens, be sure to use a 256-color palette in each background image you create.

- Be sure to leave room at the bottom of the background bitmap (about 40 pixels in height, preferably black) for placement of the control buttons (Browse CD, Back, and Exit) specified in the rshell.ini file.

For example, here is an illustration of the background bitmap image used to create the standard Autorun screen. Note that a black area 40 pixels high was created at the bottom of the image, to allow placement of the control buttons.



2. Open the rshell.ini file using a text editor.
3. Locate the dialog section that you want to customize.
4. To the right of the bk_bitmap= setting, enter the path to the bitmap file, relative to the location of the shell directory. For example:

```
bk_bitmap=..\bmp\myinstall.bmp
```
5. Save your changes to the rshell.ini file in place; do not move the file.

Customizing a Screen's Title Bar Text

The title bar appears at the top of every autorun dialog screen. You may want to include your company's name in the title bar or provide other identifying information. For example, this screen shows customized text in a CD autorun screen's title bar:



To customize a screen's title bar:

1. Open the `rshell.ini` file using a text editor.
2. Locate the `[Dialogx]` section that you want to customize.
3. To the right of the `caption=` setting, enter the text that you want to appear in the screen's title bar.

For example, the text "Mach Networks" results in the title "Netscape by Mach Networks"

```
caption=Mach Networks
```

4. Save your changes to the `rshell.ini` file in place; do not move the file.

Adding a New Button to a Screen

You can add a button to an autorun screen that performs any of these functions:

- Launch an executable (.exe) program.

For example, if you want to include an installer for another application on the CD, you can add a button that users can click to launch the installer.

- Go to another screen

For example, if you're creating multiple CD autorun screens, you can add a button that users can click to go to a particular screen. (This is in addition to the standard Browse, Back, and Exit buttons that appear on each autorun screen.)

- Open a file

For example, you can add a button that opens a `readme.txt` file so that users can read installation instructions for another application you're providing on the CD.

- Print a text file

For example, you can add a button that prints the installation instructions.

- Explore a directory

For example, if you're including a directory of utilities on the CD, you can add a button that opens that directory so that user can view its contents.

- Open a file in Netscape Navigator

For example, if you've provided an HTML or GIF format file on the CD that you want users to view in Navigator, you can add a button that opens the file using an already-installed version of Navigator.

- Create a shortcut on the user's desktop

For example, if there's a directory on the CD that you want users to have easy access to, you can create a desktop shortcut for that directory.

To add a new button to an Autorun dialog screen:

1. Open the `rshell.ini` file using a text editor.
2. Locate the dialog section where you want to add a new button.
3. Within the dialog section, locate the section where the buttons for the dialog are defined. Each button group begins with

```
button1_bitmaps=
```

4. Decide how many buttons you want to appear in the dialog.
5. If you need more buttons than are defined by default in the `rshell.ini` file, copy and paste new button groups and increment the button number for each new group you add.
6. To remove buttons, delete the button groups that are above the number you need, or simply leave their settings blank.
7. Assign an action to each button using the `buttonx_cmdline=` setting. You can define any one of seven different button actions. See the description of the `buttonx_cmdline=` setting earlier in this chapter, or by referring to the comments in the `rshell.ini` file.

For example, to have `button1` go to the `dialog2` screen, you would enter:

```
button1_cmdline=window,dialog2
```

For example, to have `button1` launch a program named `Setup.exe`, you would enter:

```
button1_cmdline=exe,..\.\.Netscape\Setup.exe
```

8. When you have finished defining buttons and button actions, save your changes to the `rshell.ini` file.

Verifying Your CD Autorun Screen Manual Customizations

After you finish editing the `rshell.ini` file, you should view your custom Autorun screens so you can verify your customizations. Follow these steps:

1. Locate this directory:


```
intallation_directory\CCKTool\Configs\my_config\Output\Shell\
```
2. To test the CD autorun screens, launch the first screen by double-clicking the file `\Shell\Nsetup32\Nsetup32.exe`.
3. Verify the appearance of your CD autorun screen and test the action of each button.

Advanced Netscape Customizations

After you've run the CCK tool, produced an installer, and made any manual customizations you may require for the CD autorun screen, you can perform additional manual customizations before distributing the installer to your users. This chapter provides an overview of the preferences architecture and the general procedure for manual customization. It also provides detailed, step-by-step instructions for some of the most common manual customizations.

This chapter contains these sections:

- Understanding How Manual Customization Works
- Understanding the Preferences Architecture Before You Start
- Editing a Configuration File with a Text Editor
- Instructions for Common Manual Customizations

Understanding How Manual Customization Works

Netscape is shipped with many preferences and user-interface items preset as “factory defaults.” After Netscape is installed, these settings are stored in special Javascript files called configuration files.

You can edit configuration files to customize the default settings for your users. For example, you can manually customize:

- Whether the Netscape activation screen launches at startup
- The Welcome page that appears at startup
- Any items that appear in the Help menu in Netscape (both text and URLs)

- Password requirements, such as whether an email password is remembered or needed for each session

To create a customized Netscape installer by using a combination of the CCK tool and manual customizations, you follow this general procedure:

1. Complete all customizations that can be performed with the CCK tool and use the tool to build the installer. The installation files will be located in the directory

```
CCKTool\Configs\configuration_name\Output\
```

where *configuration_name* is the configuration name you specified (or selected) for your customized configuration in the first screen of the CCK tool.

2. Verify your customizations and run the CCK tool again, if necessary, to adjust them.
3. Identify the preferences you want to change and the Javascript files that specify them. Table 1 below specifies the main Javascript files involved. Detailed information on specific preference entries within those files will be available online at a later time; see Netscape 7.0 Client Customization Kit Release Notes for the most current information.
4. Identify the xpi files in the installation files produced by the CCK Tool that contain the JavaScript files you want to change. (Table 1 below specifies the which xpi files contain which JavaScript files.)
5. For each xpi file involved:
 - Use a utility such as WinZip to extract the entire xpi file into some convenient temporary directory.
 - Locate the JavaScript files that you want to modify in the extracted files.
 - Use a text editor to modify the JavaScript files.
 - Use a utility such as WinZip to zip up all the files you extracted from the xpi, including the ones you modified.
 - Replace the old xpi file with your new xpi file.
6. After you have modified the necessary JavaScript files and replaced the old xpi files with the revised xpi files, run the installer and test the resulting Netscape installation to ensure that your customizations have taken effect.

For step-by-step instructions describing this procedure more precisely for specific manual customizations, see single change to a JavaScript file, see Instructions for Common Manual Customizations (page 126).

Understanding the Preferences Architecture

Factory defaults are set in `.js` files, which are in turn located in zipped `.xpi` files in the directory

```
CCKTool\Configs\my_config\Output\Core
```

The primary `.js` file is `all-ns.js`, which is located in the file `browser.xpi`.

Note: If you make changes to preferences stored (after installation) in the `prefs.js` file, where the user-configurable customizations are stored, you run the risk of overwriting the bookmarks, address books, and other settings that your users may have set in their existing profiles.

Table 12-1 JavaScript files to edit

Filename	XPI file that contains preferences file	Contents
<code>all-ns.js</code>	<code>browser.xpi</code>	general preferences and those not covered specifically by other <code>.js</code> files
<code>config.js</code>	<code>browser.xpi</code>	chrome-related preferences
<code>editor.js</code>	<code>browser.xpi</code>	preferences related to composer
<code>mailnews.js</code>	<code>browser.xpi</code>	mail and news preferences
<code>prefs.js</code>	The contents of <code>prefs.js</code> are created from the contents of the files <code>all-ns.js</code> and <code>all.js</code> in <code>browser.xpi</code> .	user-configurable customizations
<code>security-prefs.js</code>	<code>browser.xpi</code>	security preferences
Windows: <code>winpref.js</code>	<code>browser.xpi</code>	fonts for each platform
Unix/Linux: <code>unix.js</code>		
Macintosh: <code>macprefs.js</code>		

Setting a preference in one of the `.js` files will create a default value that can be changed by the user by choosing Preferences from the Edit menu. Not all preferences are initialized at startup via these `.js` files. In addition, some settings are stored in RDF files that live in the operating system's directory after the user installs Netscape. For example, for Windows NT, the path would be:

```
C:\Winnt\Profiles\user_name\Application  
Data\Mozilla\Profiles\profile_name\
```

Important Legal Restrictions

The license that ships with the CCK tool imposes restrictions on certain kinds of customizations. In particular, under the terms of the license agreement, you may NOT perform any of the following customizations:

- Remove the Search and Directory folder or the Inside Netscape folder from their default locations in the Bookmarks menu when you open a new profile with Netscape 7.0.
- Remove or modify the contents of the Search and Directory folder or the Inside Netscape folder in the Bookmarks menu.
- Change the Sidebar tab that is open by default when you open a new profile with Netscape 7.0 (currently the News tab).
- Remove the Search or Today's Tips sidebar tabs from the My Sidebar tabs shown by default when you open a new profile with Netscape 7.0.
- Remove any of the Sidebar tabs from the list of tabs available to an end user in the default drop-down list of sidebar tabs available when you open a new profile with Netscape 7.0. (It's OK to add additional tabs).
- Change the default Search service to which the Location Bar Search button and other search services are linked.
- Change the page that opens by default when Mail starts up.

Before You Start

The CCK tool allows you to customize specific aspects of the look and feel of Netscape. In addition, by editing `all-ns.js` and other configuration files, you can customize almost any aspect of Netscape. You'll need to familiarize yourself with the Netscape user interface and associated preferences to assess how to customize Netscape for your needs. You'll also need to identify:

- The configuration file (typically a JavaScript file) involved
- The name of the preference within that configuration file.
- The `.xpi` file where the configuration file is located in the installation files produced by the CCK tool.

More details about names of specific preferences and the configuration files where they are stored will be provided online. See the Netscape 7.0 Client Customization Kit Release Notes for the most current information

(home.netscape.com/eng/mozilla/ns7/relnotes/cck.html).

Some Netscape features or attributes are under user control, but only indirectly. Such features include whether certain toolbars are displayed, and also settings that Netscape remembers automatically, such as window size and position. Such settings are not “preferences” in the typical sense, because they cannot be set from a user-selected window or dialog box. Instead, these features are referred to as Netscape “states.”

In addition to the preferences that you can set, you can alter Netscape configuration settings that are not under direct or indirect user control, such as the items that appear in the Help menu.

Editing a Configuration File with a Text Editor

By editing `all-ns.js` and other configuration files directly, you can modify Netscape in a variety of ways. You should use a simple text editor (one that doesn't do any formatting) to modify a configuration file. For example, you can use NotePad for Windows, SimpleText for Mac OS, or `vi` for X-Motif. If you use a word processor to edit the configuration file, make sure you save the edited configuration file as plain (ASCII) text. If formatted characters are used, the configuration file may not be created correctly.

As described above under Understanding How Manual Customization Works (page 121), once you have extracted the `.js` file that you want to modify from the `xpi` file, you can edit it with a text editor. To do so, you must determine the value type that the preference takes (numeric, string, or boolean) and make the required change to produce the default setting that you want.

Important: Don't use Netscape Composer to edit configuration files. Composer adds characters to the file that can interfere with its use as a configuration file.

Instructions for Common Manual Customizations

Disabling Netscape Activation/Registration

If you customize mail and news settings, you may want to disable Netscape activation as described here before you distribute your installer. For a discussion of the effect of Netscape activation on customized mail and news settings, see Netscape Activation Considerations for Mail and News (page 78).

To turn off activation, follow these steps:

1. Locate the file

```
CCKTool\Configs\my_config\Core\browser.xpi
```

2. Unzip the entire file `browser.xpi` into a convenient empty directory.
3. In the directory containing the extracted files, locate the file `bin\defaults\pref\all-ns.js`.
4. Open `all-ns.js` with a text editor.
5. Locate this line:

```
pref("browser.registration.enable", true);
```

6. Change `true` to `false` and save the file.
7. Zip up the entire `bin` directory again into a new file called `browser.xpi`.
8. Replace the original `browser.xpi` file in `CCKTool\Configs\my_config\Core\` with the new `browser.xpi`.

9. Test your customization.

To test whether activation has been successfully disabled, run `setup.exe` and launch Netscape with a new profile. (Activation runs only once per profile.) If the activation screen does not appear, activation has been disabled.

Customizing the Welcome Page

The Welcome page appears when the user starts up a new profile for the first time. You may want to customize it so you can provide up-to-date information for new users when they first launch Netscape.

Follow these steps to manually customize the URL specified for the Welcome page:

1. Locate this file:

```
CCKTool\Configs\my_config\Core\browser.xpi
```

2. Unzip the entire file `browser.xpi` into a convenient empty directory.
3. In the directory containing the extracted files, locate the file `bin/defaults/pref/all-ns.js`.
4. Open `all-ns.js` with a text editor.
5. Locate this line:

```
pref("browser.startup.homepage",  
"chrome://navigator-region/locale/region.properties");
```

6. Change the URL to the URL for your own welcome page and save the file.
7. Zip up the entire `bin` directory again into a new file called `browser.xpi`.
8. Replace the original `browser.xpi` file in `CCKTool\Configs\my_config\Core\` with the new `browser.xpi`.
9. Test your customization.

Preparing Macintosh Installers and Program Files

To create a customized Macintosh installer, you first create a customized Windows installer, then transfer the customized Windows files to a standard Macintosh installation package (for Mac OS 9) or an installed version of Netscape 7.0 (for Mac OS X). This chapter provides detailed instructions for this procedure.

Note: If you are preparing a Linux installer, you simply transfer the tar file generated by the CCK tool file to a Linux system for testing and distribution. For details, see Chapter 4, “Preparing Operating System, Language, and Installer Information” (page 61).

This chapter contains these sections:

Tools Required

Creating a Customized Macintosh Installer

Tools Required

To create a customized Netscape browser installer for Macintosh systems, you need these Macintosh tools:

- **Stuffit Deluxe 5.5 or higher**, which is available from your local computer store or through <http://www.aladdinsys.com/store/>
- **ZipIt 1.3.8 or higher**, shareware available through <http://www.zdnet.com/downloads/>
- **Mac OS 9 diskcopy utility**
- **Macintosh system with both Mac OS 9 and Mac OS X installed**

Creating a Customized Macintosh Installer

The first five steps involved in creating a customized Macintosh installer are common to both Mac OS 9 and Mac OS X:

1. In the second screen of the CCK tool, "Specify Operating System and Language," choose Mac OS in the drop down menu.
2. Continue through the rest of the CCK screens, customizing as you go.
3. When you reach the Create Macintosh Installer screen, click the Build Installer button. CCK creates the file CustomizedMacFiles.zip in this directory:

```
CCKTool\Configs\my_config\Output\
```

4. Transfer CustomizedMacFiles.zip to file to a system running Mac OS 9 and let it expand into these files (Note that StuffIt Expander creates a folder called CustomizedMacFiles that contains these files. If you use ZipIt, create a folder named CustomizedMacFiles and place these files in that folder.):
 - o ChromeDefaults.zip -- contains chrome and defaults folder
 - o SMI_Creator_for_NSOSX.sit
 - o Resource_IO.sit
 - o ns_smi_eula.rsc.sit

At this point, the instructions differ depending which operating system you are running:

Create a Customized Mac OS 9 Installer (page 131)

Creating a Mac OS X Installer (page 133)

Create a Customized Mac OS 9 Installer

After you complete steps 1 through 4 above under “Creating a Customized Macintosh Installer,” follow these steps to create a Mac OS 9 installer:

1. Go to <http://home.netscape.com> and download the Full Installer for the Mac OS 9 version of Netscape 7.0.
2. Locate the Installer Modules folder inside the Netscape 6 Full Installer (auto-expanded) folder.
3. Select `browser.xpi`, `langenus.xpi`, `regus.xpi`, and `deflenus.xpi` and extract the complete contents of these files.
4. Replace these files in `browser.xpi` from `ChromeDefaults.zip`:
 - o `/viewer/chrome/classic.jar` from `chrome`:
 - o `/viewer/chrome/modern.jar` from `chrome`:
 - o `viewer/defaults/pref/all-ns.js` from `defaults/pref`
 - o `viewer/defaults/pref/all.js` from `defaults/pref`
5. Replace these files in `langenus.xpi` from `ChromeDefaults.zip`:
 - o `viewer/chrome/en-US.jar` from `chrome/`
6. Replace or add these files in `regus.xpi` from `ChromeDefaults.zip`:
 - o `viewer/chrome/US.jar` from `chrome/`
 - o `viewer/defaults/profile/US/bookmark.html` from `defaults/profile/US/`
 - o `viewer/defaults/profile/US/panels.rdf` from `defaults/profile/US/`
 - o `viewer/defaults/profile/US/panels.rdf` from `defaults/profile/US/`
 - o **add to** `viewer/defaults/isp/US/panels.rdf` from `defaults/isp/US/mailaccount.rdf` and `newsaccount.rdf` (Unlike the other files, `mailaccount.rdf` and `newsaccount.rdf` are not part of the standard Macintosh installer.)
7. Replace or add these files in `deflenus.xpi` from `ChromeDefaults.zip`:
 - o `viewer/defaults/profile/bookmark.html` from `defaults/profile/`
 - o `viewer/defaults/profile/panels.rdf` from `defaults/profile/`

- **add to viewer/defaults/isp/ from defaults/isp/US/mailaccount.rdf and newsaccount.rdf (Unlike the other files, mailaccount.rdf and newsaccount.rdf are not part of the standard Macintosh installer.)**
- 8. Replace or add these files in To customize the Welcome Dialog or to add or subtract components, use a text editor to modify the file `Config.ini`.**
- 9. Use the Stuffit utility to create a self-extracting archive from the Netscape 7.0 Full Installer folder.**
- 10. Verify the customization by expanding the executable, then install the build and check for the appropriate customizations.**

If you are creating a network installer, use the self-extracting archive. Users will download this file, extract its contents, and run the Netscape 7.0 Installer file to install Netscape.

If you are creating a CD, use the Netscape 7.0 Full Installer directory for the contents of the Macintosh partition, not the self-extracting archive.

Creating a Mac OS X Installer

After you complete steps 1 through 4 above under “Creating a Customized Macintosh Installer” (page 130), follow the steps in this section to create a Mac OS X installer.

Note: You must perform steps 1 through 8 on Mac OS 9.

1. Go to `home.netscape.com` and download Netscape 7.0 for Mac OS X. When the download completes, a disk image folder named Netscape for Mac OS X appears on the desktop.
2. Create a folder of your choice, for example Custom Netscape for Mac OS X.
3. Drag the contents of the Netscape for Mac OS X folder to the folder you created. Arrange the folders so they appear the same as the disk image:
 - o “Netscape”
 - o “<- To install, just copy”
 - o “<- this folder to”
 - o “<- your hard disk”
4. Decompress `ChromeDefaults.zip` in CustomizedMacFiles folder. (Stuffit Expander creates a folder called `ChromeDefaults`. If you are using the ZipIt utility, you need to create the `ChromeDefaults` folder.) `ChromeDefaults` contains these two folders:
 - o `chrome`
 - o `defaults`
5. Locate `netscape.app` in the folder Custom Netscape for Mac OS X, then Ctrl-click the file.

In the menu that appears, choose Show Package Contents. The folder opens.
6. In the `Contents/MacOS` directory, replace the `chrome` and `defaults` folders with the ones located in the `ChromeDefaults` folder.
7. In the folder CustomizedMacFiles, double-click these three `.sit` files to expand them:
 - o `SMI_Creator_for_NS-OSX.sit`
 - o `Resource_IO.sit`
 - o `ns_smi_eula.rsrc.sit`

8. Drag the folder Custom Netscape for Mac OS X on to SMI Creator for Mac OS X to create an SMI installer, Custom Netscape for MacOS X.smi
9. Verify your customization by launching Netscape on Mac OS X and checking for the appropriate customizations.

Distributing Your Installers

Once you have generated and tested your customized installers, you need to prepare them for distribution. This chapter summarizes some of the major tasks involved.

This chapter contains these sections:

Distributing a CD-Based Installer
Distributing Network-Downloadable Installers or Binaries
End-User Instructions

Distributing a CD-Based Installer

The general process for distributing Netscape installers on CDs works like this:

1. Verify your CD layout.
2. Create the CD master disc.
3. Verify and virus check the CD master disc.
4. Create an archive copy of the CD master disc.
5. Deliver CD master disc for duplication.
6. Distribute CDs.

The sections that follow describe how to verify your CD layout and prepare your files for CD distribution.

Verifying Your CD Layout (No Autorun Screen)

If you didn't include a CD autorun screen, verify the files for your CD layout as described below.

Windows CD Layout

Verify your CD layout for Windows as follows:

1. Open the directory

```
installation_directory\CCKTool\Configs\my_config\Output\
```

Verify that it includes the following files:

- A file called `Setup.exe`, which is the Netscape installer file.
 - A set of `.xpi` files, which contain the Netscape component files in archive format.
 - `autorun.inf`, which automatically launches the Netscape installer `setup.exe` file when the user inserts the Netscape CD into a CD-ROM drive.
2. Remove the file called `NSSetup.exe`, because it's not needed. Users will double-click the `setup.exe` installer file to begin installation.
 3. Go to "Preparing Your CD-Ready Files for CD Distribution" (page 139), later in this chapter.

Macintosh CD Layout

For Macintosh, you need to verify the contents of the Netscape Full Installer folder that you modified as described above under Building Macintosh Installers. It should contain the following files and directories:

- Netscape 7.0 Installer
- Netscape 7.0 read-me file
- License
- Installer Modules (folder that includes `config.ini`, `installer.ini`, and all the `.xpi` files)

After confirming that these files and directories, go to "Preparing Your CD-Ready Files for CD Distribution" (page 139).

Linux CD Layout

After you run the CCK tool to create a Linux installer, decompress the Linux tar file located in this directory:

```
CCKTool\Configs\my_config\Output\
```

The decompressed files should look like this:

- xpi directory
- config.ini
- installer.ini
- license.txt
- netscape-installer
- netscape-installer-bin
- README

After confirming that these files and directories, go to “Preparing Your CD-Ready Files for CD Distribution” (page 139).

Assembling Your CD Layout (Autorun Screen)

If you included a CD autorun screen for your Windows installer, assemble the files for your CD layout as follows:

1. Open the directory

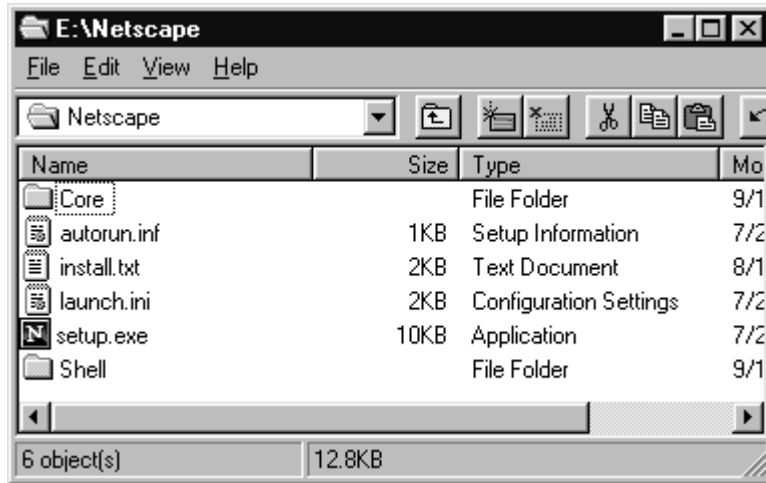
```
installation_directory\CCKTool\Configs\my_config\Output\
```

Verify that the Output directory contains the following:

- A directory called `Core`, which contains the customized Netscape files
- A directory called `Shell`, containing the subdirectories `\Bmps` and `\Nsetup32`, which include the files for the CD autorun screen
- `Autorun.inf` (launches the `setup.exe` at the root of the CD image after the CD is inserted in the drive)
- `Launch.ini` (configures `setup.exe` and detects Windows operating system)

- o `setup.exe` (launches `nsetup32.exe`, which displays the first Autorun screen)

Your CD layout should follow the same general layout as the typical one illustrated here:



2. Verify that the `Shell` directory contains these files and folders:
 - o A folder called `\Bmps`, which contains all the standard and customized bitmap (`.bmp`) files used by the CD autorun screens
 - o A folder called `\Nsetup32`, which contains the following:
 - `Nsetup32.exe`, the autorun program
 - `rshell.ini`, the file that defines the appearance and behavior of the Autorun screens. See Chapter 11, “Manually Customizing the CD Autorun Screen” (page 101) for information on how to manually customize this file.
3. If you’ve manually customized the CD autorun screen so that users can install additional plug-ins or applications from the Autorun screens, create a directory called `Xinstall` inside the directory

```
installation_directory\CCKTool\Configs\my_config\Output\Shell
```

Buttons you add to your CD autorun screens can be linked to the executable files you include in the `Xinstall` directory, so that users can install additional software simply by clicking a button.

- Put the additional installers into subdirectories inside the directory

```
installation_directory\CCKTool\Configs\my_config\Output\Shell
```

Important: Make sure that the actual locations of the additional installers match the file pathnames you specified for them in the `rshell.ini` file.

- If you've manually customized the CD autorun screen to open any other files, such as a `readme.txt` file, include the additional files inside the directory

```
installation_directory\CCKTool\Configs\my_config\Output\Shell
```

and make sure that their locations match the file pathnames you specified for them in the `rshell.ini` file.

Preparing Your CD-Ready Files for CD Distribution

To prepare your CD-ready files for CD distribution, you need the following:

- Software to create a data CD, such as Adaptec Easy CD Creator or Adaptec Toast
- CD recorder, for creating your master CD
- CD-recordable discs, available where you purchased your CD recorder
- Bit-compare program such as Microsoft's WinDiff utility
- virus checker program
- CD duplication service, to make copies of your master CD

Follow these steps to create a master CD disc:

- If you didn't include a CD Autorun Screen, verify the files in your CD layout as described in *Verifying Your CD Layout (No Autorun Screen)* (page 136). If you included a CD autorun screen, assemble the files for your CD layout as described in *Assembling Your CD Layout (Autorun Screen)* (page 137).

2. Using your CD creation software, create a CD master disc that contains all the files from the directory

```
installation_directory\CCKTool\Configs\my_config\Output\
```

If you are creating a hybrid CD that includes a Macintosh partition, you also need to specify the location of the Netscape Full Installer folder that you modified as described in Chapter 13, “Preparing Macintosh Installers and Program Files” (page 129).

If you are creating a hybrid CD that includes a Linux partition, you also need to specify the location of the Linux installation files that you decompressed from the Linux tar file produced by the CCK tool.

3. Using a bit-compare utility such as Microsoft WinDiff, verify that the files on the CD exactly match the files in the \Output directory on your hard disk.

If the files don’t compare exactly, make sure you’re comparing the correct set of files on your hard disk with the files on the master CD. The most common reason bit comparisons fail is that the wrong set of files are being compared.

4. Using a virus checker program, verify that the files on the CD are virus free.
Your gold master disc is now ready for duplication.
5. Create a second gold master disc and keep it in a safe place for archive purposes.
6. Provide your gold master disc to a CD duplication service.

Before the duplication service completes your entire order, be sure to request that the duplication service sends you the first several CDs, so you can verify that the contents of these CDs exactly matches your gold master archive CD. Alternatively, you can request that the duplication service performs this step.

7. Distribute the CDs to your customers.

Depending on how you plan to distribute your CDs, you may want to create a printed cover that can be inserted into the CD’s plastic jewel case (the plastic case that contains the CD). Your duplication service may offer this service to you. Alternatively, programs such as Adaptec Easy CD Creator include a template for creating printed jewel case inserts.

Distributing Network-Downloadable Installers or Binaries

To distribute Netscape 7.0 over the network:

1. On your HTTP or FTP site, create a Netscape download directory that corresponds to:
 - **For Windows (stub installers):** the location you entered for the FTP directory in the CCK tool. This is the directory you'll use to store the Netscape installer files.
 - **For Linux (fat installer):** the location where you plan to put the Linux tar file produced by the CCK tool.
 - **For Mac OS X (customized binaries) and Mac OS 9 :** the location where you plan to put the compressed Mac OS files you modified using your customized Windows installation files.

2. If you are preparing a Windows installer, copy the contents of the directory

installation_directory\CCKTool\Configs\my_config\Output

into the download directory on your FTP or HTTP site.

If you are providing a Macintosh installer (Mac OS 9) or binaries (Mac OS X) for network download, you also need to copy the self-extracting archive that you created as described in Chapter 14, "Distributing Your Installers" (page 137).

If you are providing a Linux tar file for network download, you need to copy the Linux tar file from the `Output` directory.

3. If you are preparing a Windows installer, put the `N6Setup.exe` file for your Windows installer one level above the download directory. For example, if the download directory is `NS/download`, put the `NSSetup.exe` file in the `NS` directory.

In addition to setting up the download directory, you should provide instructions on your web site for each type of installer available.

End-User Instructions for Windows

Instruct your Windows users to follow these steps:

1. Create a new folder on their hard disk.
2. Download the `NSSetup.exe` to that new folder from the HTTP or FTP location provided by the ISP.
3. Double-click the `NSSetup.exe` to install Netscape.
4. Delete the new folder when installation is complete.

End-User Instructions for Macintosh

If you are providing a Macintosh Mac OS 9 installer for network download, instruct your Macintosh users to follow these steps to install Netscape:

1. Download the self-extracting archive from the HTTP or FTP location provided by the ISP.
2. After the file downloads and extracts itself into the Netscape Full Installer directory, double-click the Netscape Installer file to install Netscape.

If you are providing a Macintosh Mac OS X binary for network download, instruct your Macintosh users to follow these steps to install Netscape:

1. Download the self-extracting archive from the HTTP or FTP location provided by the ISP.
2. After the file downloads and extracts itself, double-click the file Netscape Installer file to run Netscape.

End-User Instructions for Linux

If you are providing a Linux binary for network download, instruct your Linux users to follow these steps:

1. Download the Linux tar file from the HTTP or FTP location provided by the ISP.
2. Untar the tar file.
3. Go to the directory `netscape-installer`.
4. Run `./netscape-installer` to install Netscape.

5. Delete the `netscape-installer` directory when installation is complete.

Resources for ISPs

Setting up an ISP involves a range of business, financial, and technical issues. This appendix provides links to online sources for more detailed information.

This appendix contains these sections:

- Business Planning
- Setting Up Your Servers and Internet Feed
- Preparing Your Account Setup Solution
- Troubleshooting and Customer Support

Business Planning

Before you begin planning the technical details of your ISP, you need to address a range of basic business issues, including market research, financing, and setting up your basic business infrastructure. At a minimum, this includes obtaining necessary state and local licenses, setting up office services such as phone systems and accounting software, domain registration, and so on.

You should also have identified your potential customers, created a viable marketing and business plan, worked out a detailed budget, identified sources of technical assistance (your own employees or external services), and performed all the other tasks required to set up a successful business. The ISP industry is mature and highly competitive; you will not succeed unless you do your homework.

If you decide you want to contract with external services for help with software preparation and distribution, see *Netscape To Go* for information on assembling an appropriate software and distribution solution:

<http://www.netscapetogo.com>

For background information on planning and setting up an ISP business, see the following:

- <http://www.isp-planet.com/>
- **Can I start an ISP with \$15000?**
http://www.isp-planet.com/business/2001/15k_bol.html
- **Newbie's Guide to Starting an ISP**
http://www.isp-planet.com/business/start_an_isp-a.html
- **ISPPlanet Guide to Building an ISP**
http://www.isp-planet.com/resources/isp_guide/index.html
- **How We Started Our Own ISP**
<http://www.techtv.com/screensavers/showtell/story/0,23008,2196566,00.html>

Setting Up Your Servers and Internet Feed

To provide Internet access, an ISP needs to sign up with a regional or national backbone provider and set up a local loop—that is, a physical connection between your location and the provider. In general, it's preferable to set up a 24 channel T1 or equivalent circuit for your first access switch.

An ISP also needs servers to handle its primary functions, including DNS, mail, Web servers (both HTTP and HTTPS), authentication, and news. Theoretically, you can do all this on just one machine, but at least four separate dedicated PCs is usually considered the minimum requirement.

One of the most basic decisions you must make is whether to own your own server facilities, rent them, or use a hybrid solution that permits users to connect to your service through other service providers as well as your own.

For more information on these decisions and other aspects of setting up your servers and Internet feed, see the following:

- **Make Your ISP Facilities-Based or Non?**
(<http://www.isp-planet.com/business/052099facilities-pt1.html>) in **ISPPlanet Guide to Building an ISP.**
- **Newbie's Guide to Starting an ISP**
http://www.isp-planet.com/business/start_an_isp-a.html

- What Do I Need for My WebSite?
<http://www.cultureandrecreation.gov.au/resources/guides/g8/s1.htm>

Preparing Your Account Setup Solution

When a customer signs up with your ISP service, you need to provide an Account Setup solution as well as a customized version of Netscape 7.0. An Account Setup solution helps users create ISP accounts and configures both system software and Netscape 7.0 to enable Internet access. Configuration includes:

- System software (such as modem drivers, dialers, network protocol stack)
- Internet access information (such as dialup access numbers, network settings, server settings)
- End-user-specific settings (such as ISP account name, user email address) for Netscape

An Account Setup solution can take one of two forms:

- **Online Account Setup** prompts for customer information to create an ISP account (for example, contact information, preferred email account name, and payment plan). Account Setup then connects to an ISP account setup server and uploads the new account request. After processing the request, the server downloads the corresponding configuration to Account Setup, which uses it to automatically configure Internet access and other settings for the end user.
- **Manual Account Setup** requires the end user to enter the appropriate configuration information manually and initiate the connection process. Therefore, you need to provide step-by-step instructions for each platform that you support. For example, see the instructions outlined in Appendix B, “Manual Account Setup” (page 149).

Troubleshooting and Customer Support

After you’ve set up your ISP business and your customers have set up your accounts, you need to provide ongoing troubleshooting and customer support. For information on these and other topics related to browser distribution and support, see the links and other resources available from the Netscape Browser Distribution Program:

<http://home.netscape.com/bisdev/distribution/index.html?cp=ncpc>

Manual Account Setup

Once your customers have installed Netscape from a CD or over the network, they need further instructions for setting up and using their ISP account.

This appendix summarizes the minimum information you need to give your dial-up customers as part of their manual Account Setup instructions for Windows NT. You can use it as a starting point in developing your own detailed instructions for use by your customers on various operating systems.

This appendix contains these sections:

- Preliminaries
- Set Up the Dialer
- Create a Modem Location
- Set Up TCP/IP
- Log On and Start Netscape

Preliminaries

Before installing Netscape and performing the setup tasks described in this appendix, a customer typically contacts the ISP, provides billing information, and fulfills any other requirements for setting up an account, such as creating a new user name and password.

In addition to installation instructions and other preliminary information, the ISP must provide a complete set of instructions describing what configuration tasks the user needs to perform after installing the Netscape software, such as configuring the system and browser software, connecting with the ISP, and logging on.

Many ISPs prefer to automate some or all of these tasks using special software. For information about custom distribution solutions, see

<http://www.netscape.togo.com>

Set Up the Dialer

Exact dialer setup instructions vary depending on the dialer software you want your customers to use and the modems they have installed.

For example, users can follow these instructions to set up the Dial-Up Networking utility provided with Windows NT:

1. Open the My Computer icon on the Windows NT desktop and double-click the Dial-Up Networking icon.

2. Click New.

The New Phonebook Entry Wizard appears. Fill in the requested information, clicking Next after you complete each screen. The titles of the Wizard screens are given in boldface in the instructions that follow.

3. **New Phonebook Entry Wizard:**

Name the new phonebook entry:

(Example: Mach Networks) _____

4. **Server:**

Select the following checkboxes:

I am calling the Internet.

Send my plain text password if that's the only way to connect.

The non-NT server I am calling expects me to type login information after connecting, or to know TCP/IP addresses before dialing.

5. **Phone Number:** _____

When you fill in the dial-in phone number and click Next, you see the last New Phonebook Entry Wizards screen.

6. Click Finish in the last Wizard screen.

7. Click Close in the main Dial-Up Networking screen.

Create a Modem Location

Exact modem setup instructions vary depending on the modem your customer is using. The instructions that follow assume that the user is has previously installed and configured a modem. For information on these tasks, see Windows NT Help.

Your users must have an appropriate Location set up for their modems to work correctly with your service. For example, they can follow these steps to set up appropriate Location information for use with an installed modem:

1. Open the Start menu and choose Control Panel.
2. Double-click the Modem control panel.
3. Click Dialing Properties.

The Dialing Properties dialog box appears.

4. Click New.

A New Location appears in the field labeled "I am dialing from:"

5. Type the name of your location (Example: San Francisco).
6. Select the appropriate region from the drop-down list labeled "I am in this country/region:" (Example: United States of America).
7. Fill in all relevant information about your phone line, including area code, access to an outside line, long distance calls, call waiting, tone versus pulse dial, and calling card information.
8. Click OK.

Set Up TCP/IP

On Windows, you can access TCP settings through the Network control panel. To configure these settings:

1. Click Start, then Settings, then Control Panel, and double-click the Network control panel.
2. Click the Protocols tab.
3. Double-click TCP/IP Protocol.
4. In the IP Address tab, select the adapter for the modem you will be using and select one of these options:

____ Obtain an IP address from a DHCP server. This option is typically used with dial-up connections.

____ Specify an IP address. If you are assigning an IP address to the user, select this option and provide the following information:

IP address (Example: 000.000.000.000) _____

Subnet mask (Example: 000.000.000.000) _____

Default gateway (Example: 000.000.000.000) _____

5. Click the DNS tab and enter the following information:

Host name (Example: mach-networks.net)_____

Domain (Example: www.mach-networks.net)_____

DNS Service Search order

Click Add to add each of these DNS Service Search Order entries:

(Example:
000.000.000.000)_____

(Example:
000.000.000.000)_____

(Example: 000.000.000.000)_____

Domain Suffix Search Order:

Click Add to add each of these DNS Suffix Search Order entries:

(Example: mach-networks.net)_____

(Example: mach-networks.net-1)_____

(Example:
mach-networks.net-2)_____

6. Click the WINS Address tab and enter the following information:

Primary WINS Server (Example: 000.000.000.000)_____

Secondary WINS Server (Example: 000.000.000.000)_____

Enable DNS for Windows Resolution

Enable LMHOSTS Lookup

7. Click OK, then click OK again. When asked if you want to restart your computer, click Yes.

Log On and Start Netscape

Once your users have entered the settings described in the preceding sections, they are ready to dial up your service, log on, and start Netscape.

Here are some sample instructions that use the Dial-Up Networking utility provided with Windows NT:

1. Open the My Computer icon on the Windows NT desktop and double-click the Dial-Up Networking icon.

2. Select the ISP phonebook entry that you set up earlier. (Instructions for creating this entry are provided in “Set Up the Dialer” on page 150.)

(Example: Mach Networks) _____

3. Click Location.

The Location Settings dialog box appears.

4. Select the location you set up earlier. (Instructions for creating this entry are provided in “Create a Modem Location” on page 151.)

5. Fill in any necessary prefix or suffix information as appropriate for your phone line.

6. Click OK.

7. Click Dial.

The Connect dialog box appears.

8. Enter the following information:

User name (Example: joe@mach-networks.net) _____

Password (Example: joe@mach-networks.net) _____

Domain: (Example: mach-networks) _____

Save password

9. Click OK.

After your users have logged on successfully, they follow the steps below to start using your customized version of Netscape.

IMPORTANT NOTE: If you have customized Mail, you may to disable Netscape activation after you create your custom Netscape installer. If you don't disable Netscape activation, you will need to provide additional instructions for your users. For details, see "Netscape Activation Considerations for Mail and News" (page 78).

These instructions assume that Netscape activation has been disabled and that the user does not have a preexisting Netscape profile.

1. Open the Start menu and choose Programs, then

(Example: Netscape 7.0 by Mach Networks) _____

then Netscape.

Note: If you have customized the Welcome screen—that is, the URL that the browser window displays when a new user starts Netscape for the first time—you can use it to convey additional account setup details or other information you want your new users to read.

2. Open the Tasks menu and choose Mail & Newsgroups.

The first screen of the Account Wizard appears.

3. Select the following radio button and click Next:

(Example: Mach NetworksNews Account) _____

4. Enter the following information and click Next:

Your Name (Example: John Chapman) _____

Email Address (Example: chapman@mach-networks.net) _____

5. Verify that the information summarized by the system is correct, and click Finish.

Note: If you customize the mail server information with the CCK tool, the user doesn't have to enter it. If you have not customized server information, the user must specify it in an additional screen at this point.

You should provide similar instructions for setting up a newsgroups account.

Netscape Profile Locations by Platform

By default, Netscape profiles are stored in different places on different platforms. Users may also choose a directory or folder in which to store their profile data.

The directories shown in Table C-1 on the next page are the defaults for profile and registry storage. Paths to the `Mozilla` directory vary among platforms. The `mozilla` directory always contains the following:

- The profile registry (name varies among platforms)
- A directory called `Profiles`

The `Profiles` directory contains one or more directories whose names correspond to Netscape profiles (shown as *profile_name* in Table C-1). Each of these directories includes another directory whose name is composed of random numbers and letters (shown as *salted_name* in Table C-1).

Important: The directory `Application Data` may be hidden on some Windows platforms (such as Windows 2000). If this is the case, the user should follow these steps to see it:

1. Open the View menu for the Mozilla directory and choose Options.
2. Click the View tab.
3. Under Hidden Options, click “Show all files”.

Table C-1 Locations of Netscape profile information on different platforms

Platform	Profile directory
Windows ME	C:\Windows\Application Data\Mozilla\Profiles\profile_name\salted_name
Windows 2000/ Windows XP	C:\Documents and Settings\user_name\Application Data\Mozilla\Profiles\profile_name\salted_name
Windows NT	C:\Winnt\Profiles\user_name\Application Data\Mozilla\Profiles\profile_name\salted_name
Windows 95/ Windows 98	If password protection is disabled: C:\Windows\Application Data\Data\Mozilla\Profiles\profile_name\salted_name If password protection is enabled: C:\Windows\Profiles\user_name\Application Data\Mozilla\Profiles\profile_name\salted_name
Macintosh OS 8.6-9.1	boot_disk:Documents:Mozilla: Profiles\profile_name\salted_name Registry: boot_disk:System Folder:Preferences:Mozilla Registry
Macintosh OS X	boot_disk:Users:user_name:Library:Mozilla Registry: boot_disk:Users:username:Library:Preferences: MozillaRegistry
Linux	Enter 'echo \$HOME' to find where \$HOME is pointing to. The registry and profiles are in \$HOME/.mozilla)